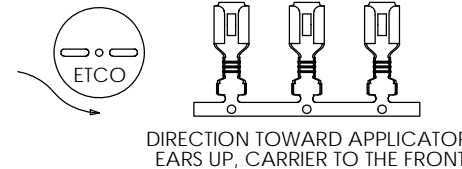
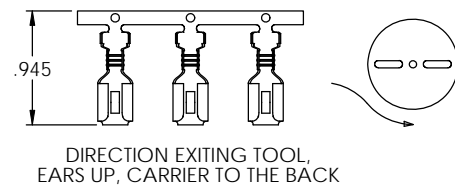
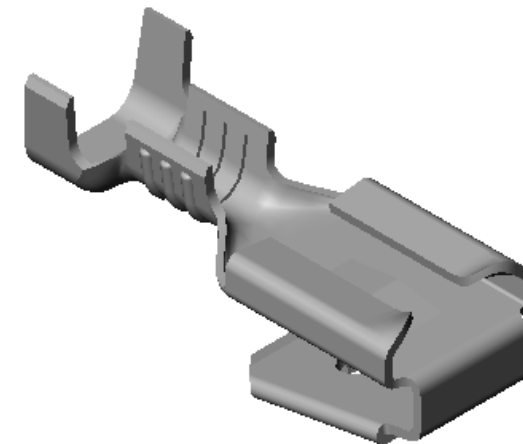
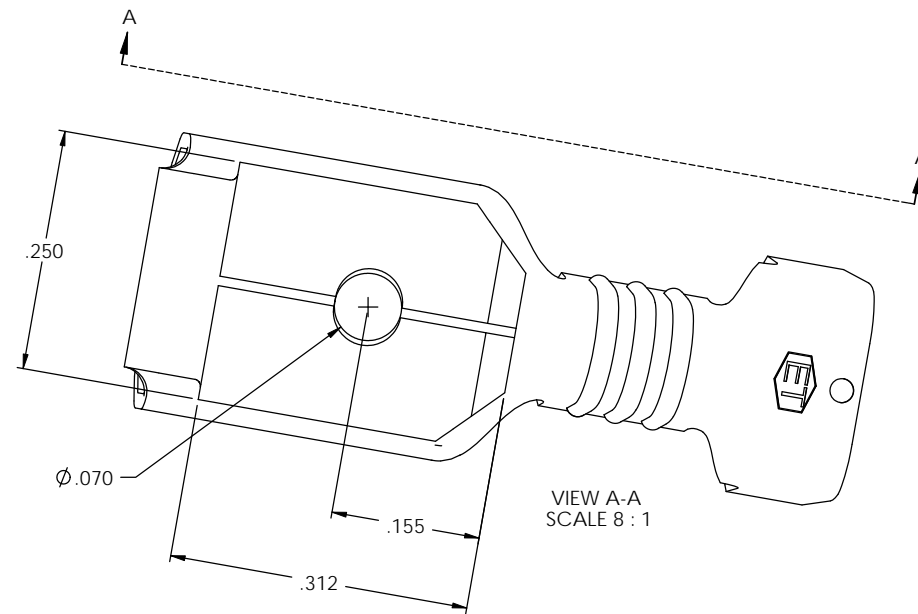
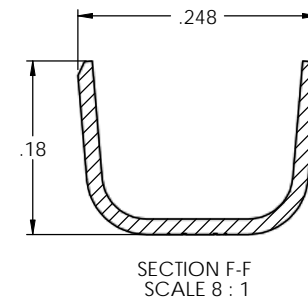
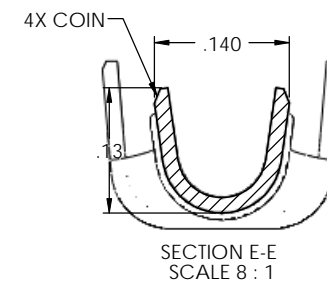
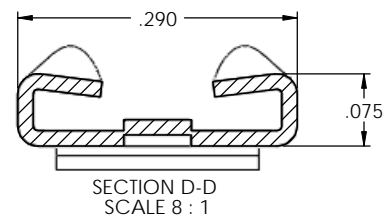
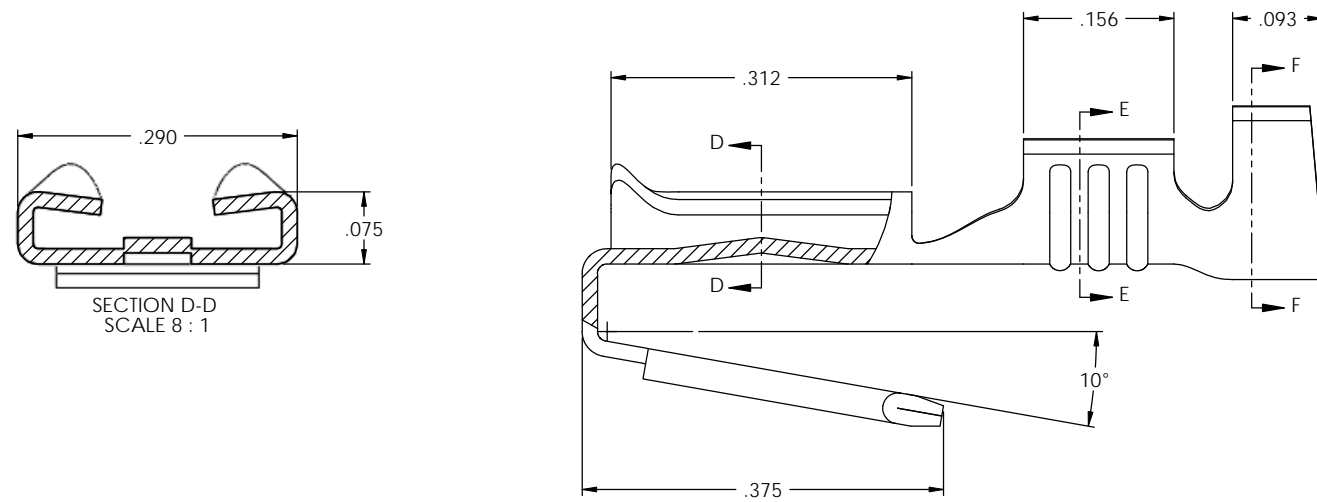
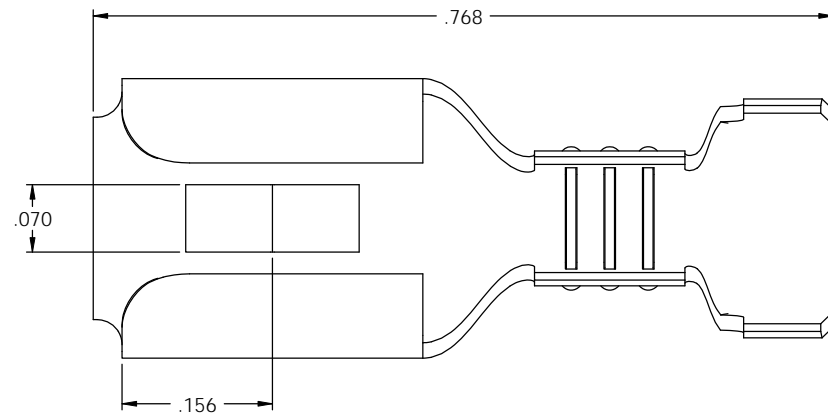


NOTES:

1. MATERIAL: .016 THICK BRASS
#4 TEMPER (FULL HARD)
PER ETCO METAL CODE 05050.
2. MATERIAL: .016 THICK PRETINNED BRASS
#4 TEMPER (FULL HARD)
PER ETCO METAL CODE 05248.
3. PARTS MAY BE COATED WITH A LIGHT FILM OF LUBRICATION USED IN THE MANUFACTURING PROCESS.
4. INSERTION/WITHDRAWAL FORCES ARE INDICATED ON THE QUALITY INSPECTION PLAN.
5. ACCETPED MALE: .032 X .250 NEMA STANDARD.
6. WIRE RANGE: 18-14 AWG.
7. INSULATION DIAMETER RANGE: \varnothing .125-.175.



P/C	DESCRIPTION	MAT'L	UL	SP
07619	DM266-THB	NOTE 2	X	X
07621	DM266-HB	NOTE 1	X	X

Rev.	Description of Change/ SCN#	Date
1	SCN#140336 SCJ ORG.ENG.DWG.DATE: 10-22-70	2-27-08

UNCONTROLLED COPY

THIRD ANGLE PROJECTION	TOOL NO.	Title: .032 X .250 PIGGY-BACK DISCONNECT		
	0118	DO NOT SCALE DWG.	Drawn By: S.JOHNSON	Date: 2-27-08
TOLERANCES UNLESS OTHERWISE SPECIFIED	ETCO	ETCO Incorporated Engineered Products 25 Bellows Street Warwick, RI 02888 Phone: (401) 467-2400 Fax: (401) 467-9230 www.ETCO.com	Chk'd/App'd By:	Scale: 8X
INCHES: XX - \pm .030 XXX - \pm .015 ANGLES: \pm 5°			Dwg. No.: DM266 cust	Size: C