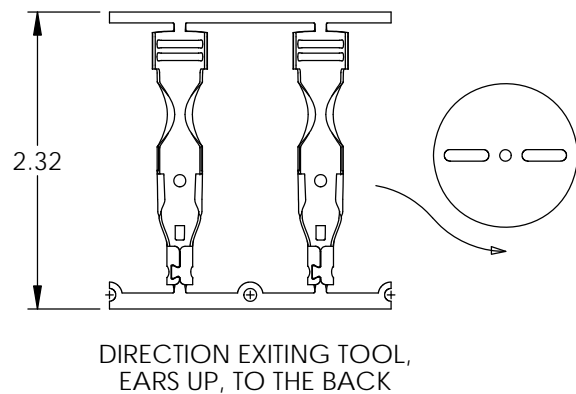
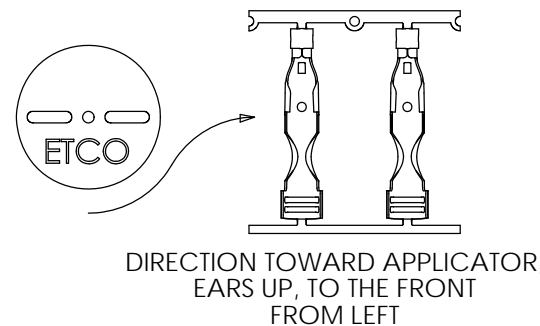
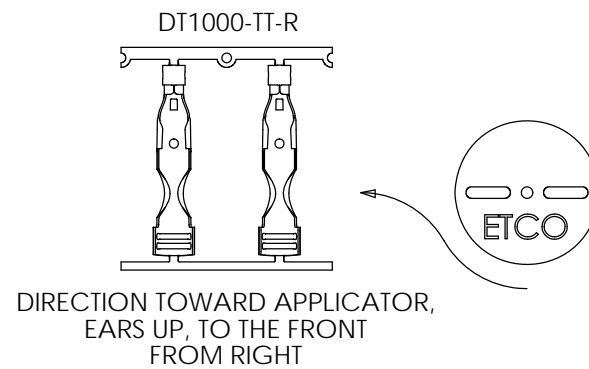
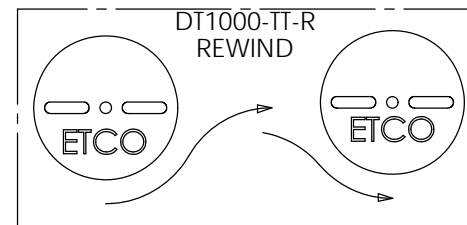
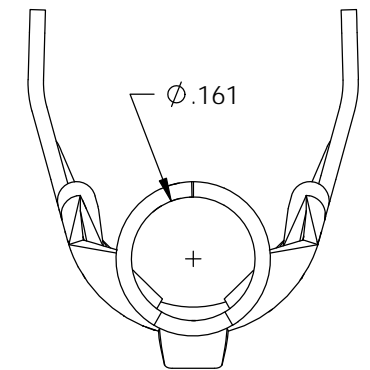
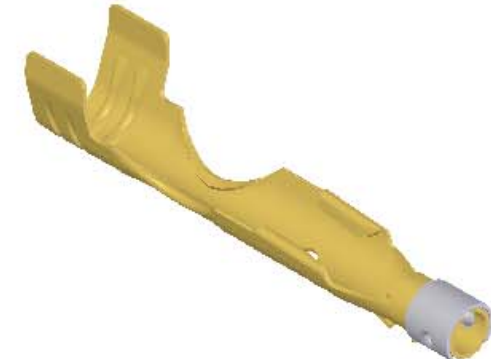
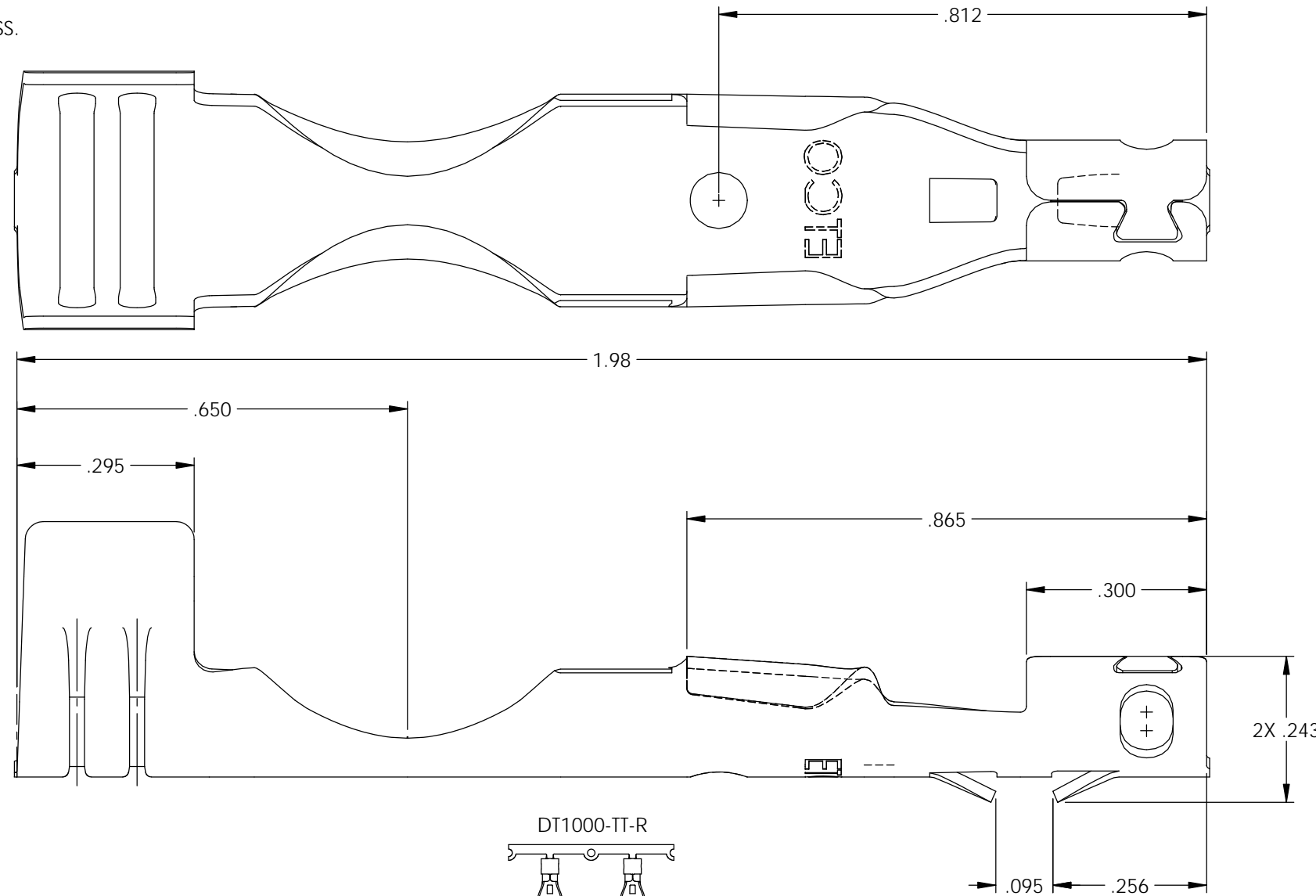
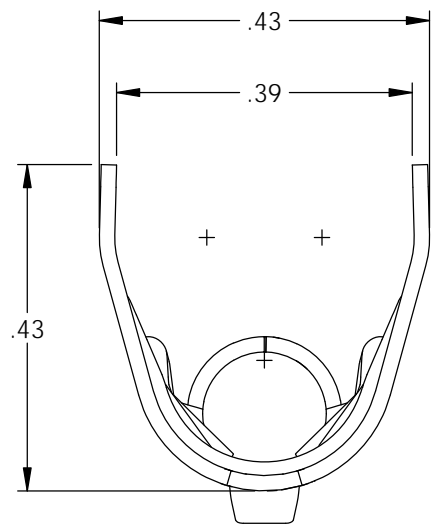


NOTES:

- MATERIAL: .020 THICK BRASS
#3 TEMPER (3/4 HARD)
PER ETCO METAL CODE 0-0016.
- MATERIAL: .020 THICK S430 STAINLESS STEEL
BRIGHT ANNEALED
PER ETCO METAL CODE 0-0069.
- PARTS MAY BE COATED WITH A LIGHT FILM OF LUBRICATION USED IN THE MANUFACTURING PROCESS.
- TERMINAL MUST BE CAPABLE OF A 90° BEND IN THE FORWARD DIRECTION WITHOUT FRACTURE OR TWIST.
- WIRE RANGE: 8mm.

P/C	DESCRIPTION	MAT'L	REWIND	CLIP
15274	DT1000-HB-TT	NOTE 1	NO	SCA209
15288	DT1000-HB-TT-R	NOTE 1	YES	SCA209
22003	DT1000-SS-TT	NOTE 2	NO	SCA209
22004	DT1000-SS-TT-R	NOTE 2	YES	SCA209

Rev.	Description of Change/ SCN#	Date
1	Redrawn in SW from ACAD Org.Eng.Dwg.Date: 3/19/02	12/14/18



UNCONTROLLED COPY

<p>THIRD ANGLE PROJECTION TOLERANCES UNLESS OTHERWISE SPECIFIED INCHES: .XX - ±.030 .XXX - ±.015 ANGLES: ±5°</p>	<p>TOOL NO. 2204</p>	<p>Title: Distributor Terminal</p>		
	<p>DO NOT SCALE DWG.</p>	<p>Drawn By: S.Johnson</p>	<p>Date: 12/14/18</p>	
<p>ETCO Incorporated Engineered Products 25 Bellows Street Warwick, RI 02888 Phone: (401) 467-2400 Fax: (401) 467-9230 www.ETCO.com</p>		<p>Design Controlled By: ETCO</p>	<p>Scale: 4X</p>	<p>Size B</p>
<p>Dwg. No.:</p>		<p>DT1000-TT</p>		