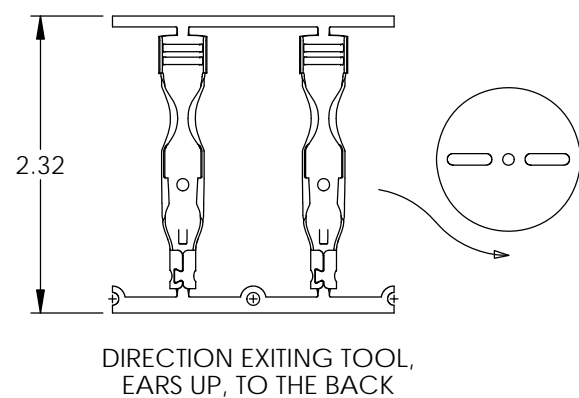
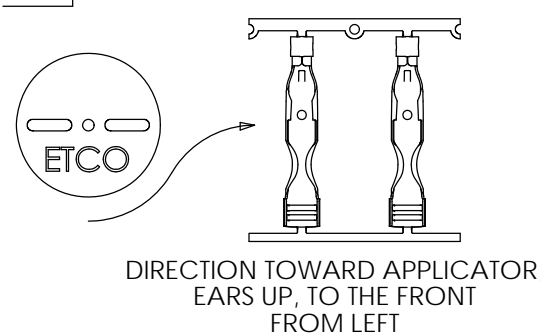
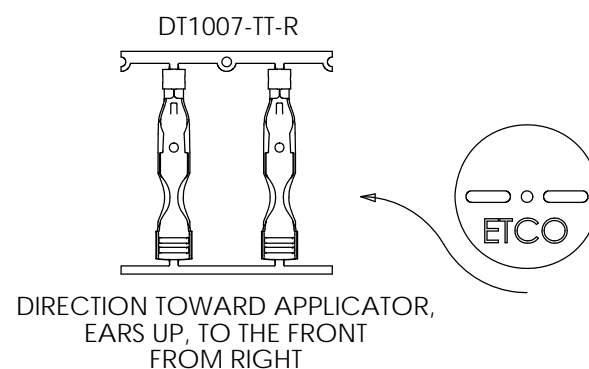
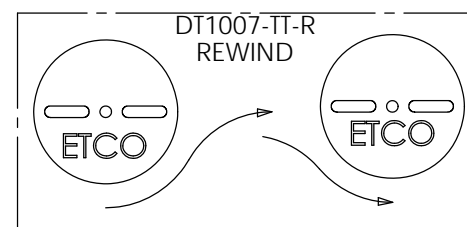
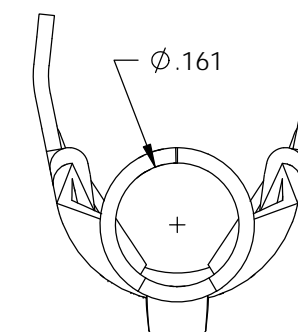
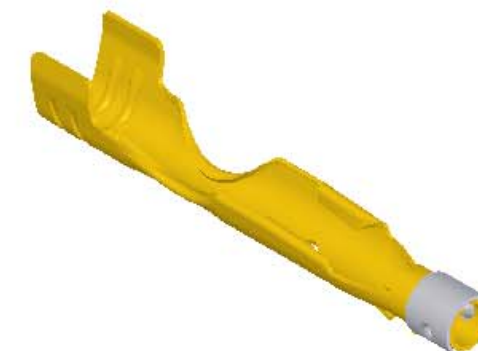
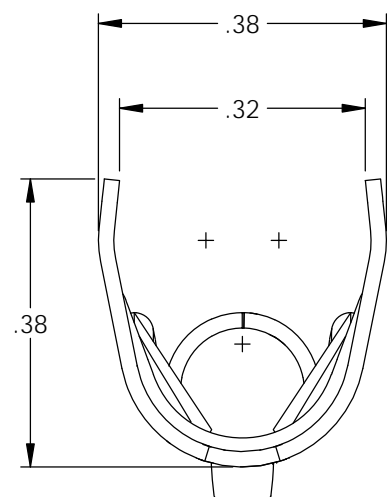
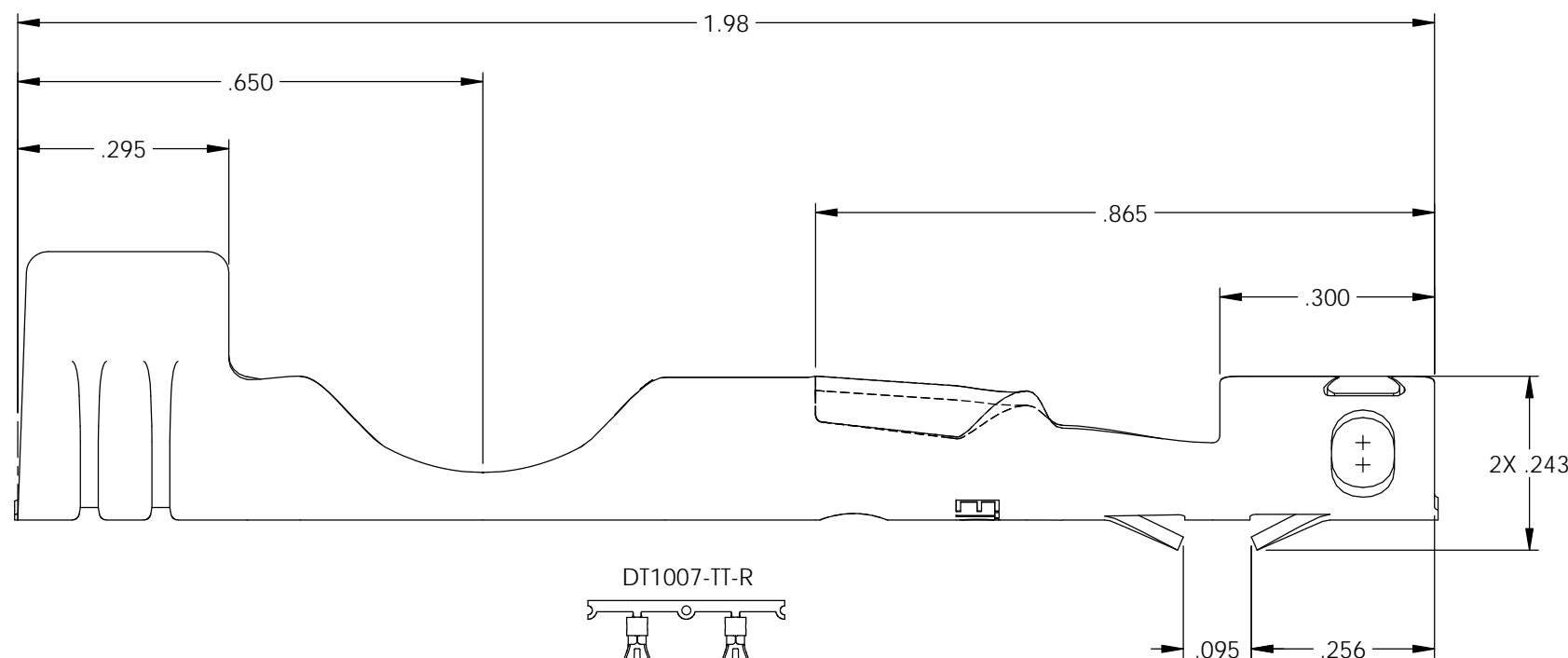
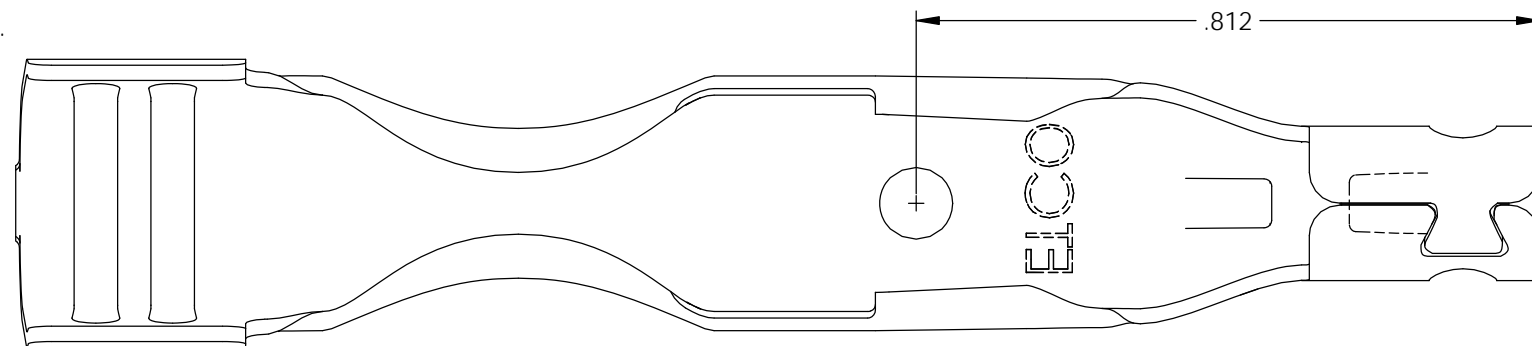


NOTES:

1. MATERIAL: .020 THICK BRASS
#3 TEMPER (3/4 HARD)
PER ETCO METAL CODE 0-0016.
2. MATERIAL: .020 THICK S430 STAINLESS STEEL
BRIGHT ANNEALED
PER ETCO METAL CODE 0-0069.
4. PARTS MAY BE COATED WITH A LIGHT FILM OF LUBRICATION USED IN THE MANUFACTURING PROCESS.
5. TERMINAL MUST BE CAPABLE OF A 90° BEND IN THE FORWARD DIRECTION WITHOUT FRACTURE OR TWIST.
6. WIRE RANGE: 7mm.

P/C	DESCRIPTION	MAT'L	REWIND	CLIP
22009	DT1007-HB-TT	NOTE 1	NO	SCA209
22010	DT1007-HB-TT-R	NOTE 1	YES	SCA209
22011	DT1007-SS-TT	NOTE 2	NO	SCA209
22012	DT1007-SS-TT-R	NOTE 2	YES	SCA209

Rev.	Description of Change/ SCN#	Date
1	Redrawn in SW from ACAD Org.Eng.Dwg.Date: 9/03/14	12/14/18



UNCONTROLLED COPY

<p>THIRD ANGLE PROJECTION TOLERANCES UNLESS OTHERWISE SPECIFIED INCHES: .XX - ±.030 .XXX - ±.015 ANGLES: ±5°</p>	TOOL NO. 2204	Title: Distributor Terminal	
		DO NOT SCALE DWG.	Drawn By: S.Johnson Date: 12/14/18 Design Controlled By: ETCO Scale: 4X Size: B
		Dwg. No.: DT1007-TT	
		ETCO Incorporated Engineered Products 25 Bellows Street Warwick, RI 02888 Phone: (401) 467-2400 Fax: (401) 467-9230 www.ETCO.com	