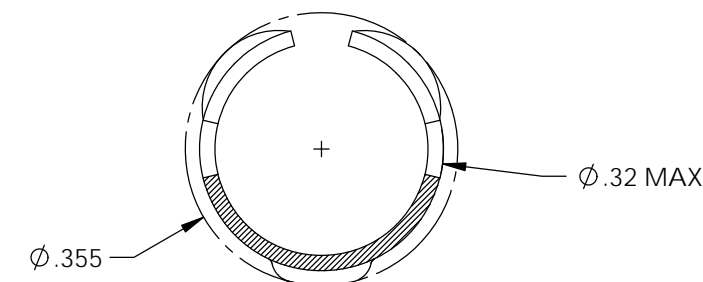
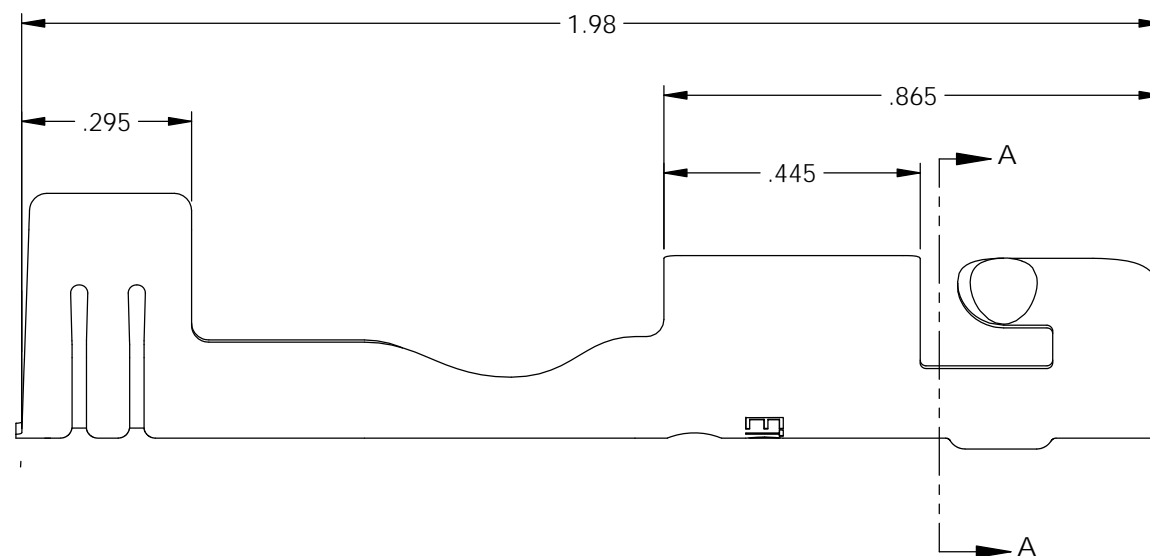
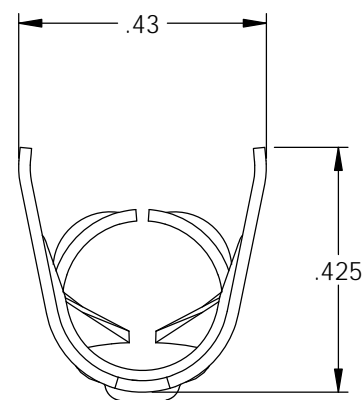
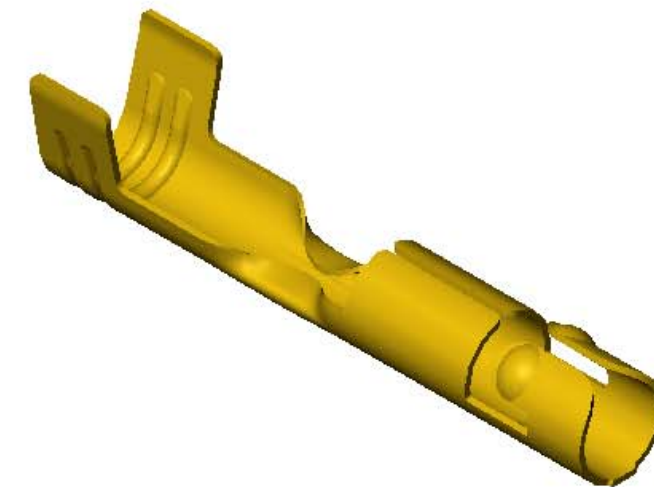
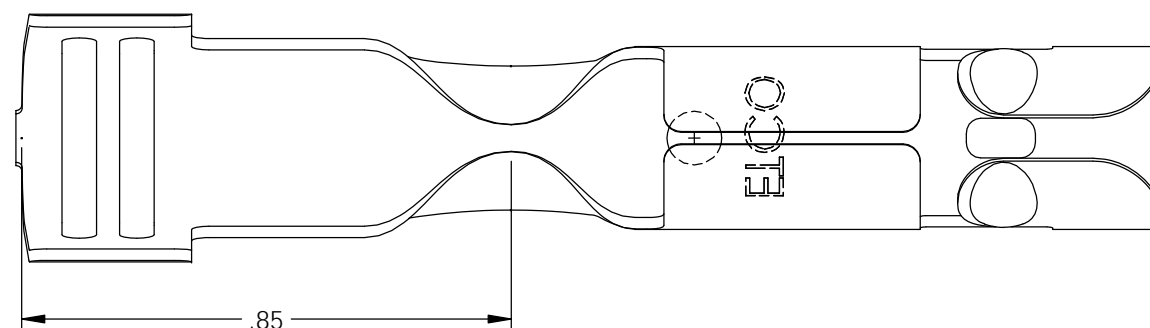


NOTES:

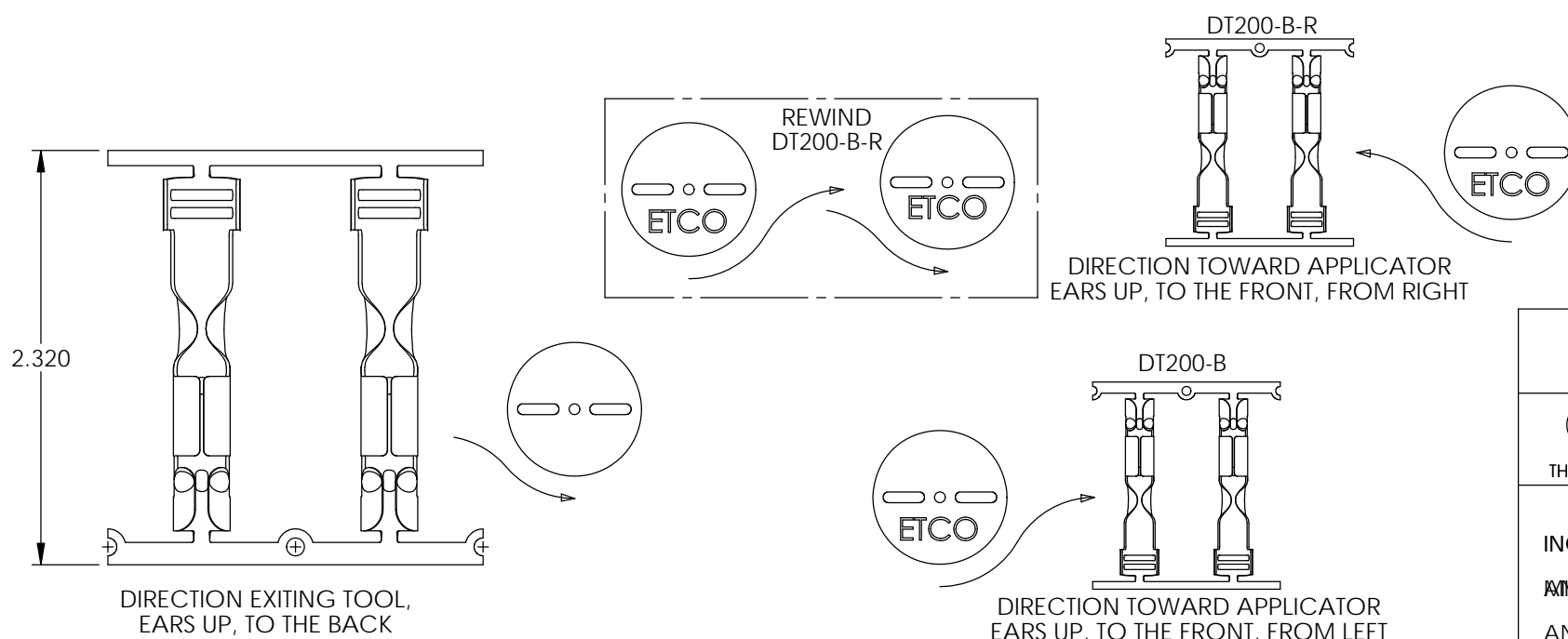
1. MATERIAL: .020 THICK BRASS  
#3 TEMPER (3/4 HARD)  
PER ETCO METAL CODE 0-0016.
2. PARTS MAY BE COATED WITH A LIGHT FILM OF LUBRICATION USED IN THE MANUFACTURING PROCESS.
3. WIRE RANGE: 7-8mm.
4. FOR MAXIMUM PERFORMANCE AND RELIABILITY, ALWAYS USE ETCO ENGINEERED IGNITION TERMINALS WITH ETCO AUTOMOTIVE INSULATORS.

P/C	DESCRIPTION	MAT'L	REWIND
15122	DT200-HB-B	NOTE 1	NO
15183	DT200-HB-B-R	NOTE 1	YES

Rev.	Description of Change/ SCN#	Date
1	Redrawn in SW from ACAD Org.Eng.Dwg.Date: 10/24/89	1/25/19



SECTION A-A  
SCALE 4 : 1



# UNCONTROLLED COPY

<p>THIRD ANGLE PROJECTION TOLERANCES UNLESS OTHERWISE SPECIFIED INCHES: .XX - ±.030 .XXX - ±.005 MILLIMETERS: .X - ±.25 .XX - ±.13 ANGLES: ±2°</p>	<p>TOOL NO. <b>2056</b></p>	<p>Title: <b>Distributor Terminal</b></p>		
		<p>DO NOT SCALE DWG.</p>	<p>Drawn By: <b>S.Johnson</b></p>	<p>Date: <b>1/25/19</b></p>
		<p>Design Controlled By: <b>ETCO</b></p>	<p>Scale: <b>3X</b></p>	<p>Size <b>B</b></p>
		<p>Dwg. No.: <b>DT200-B cust</b></p>		