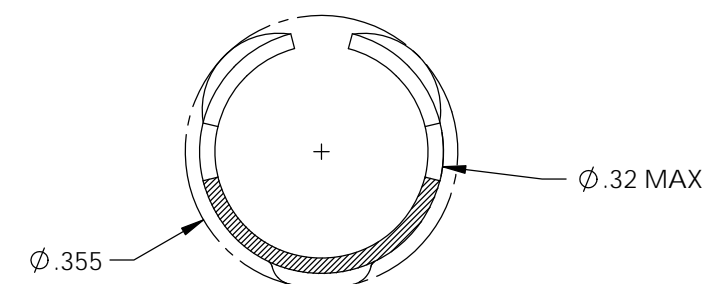
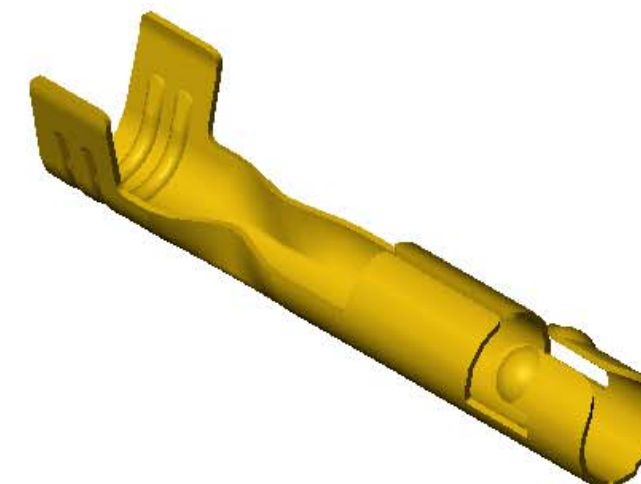
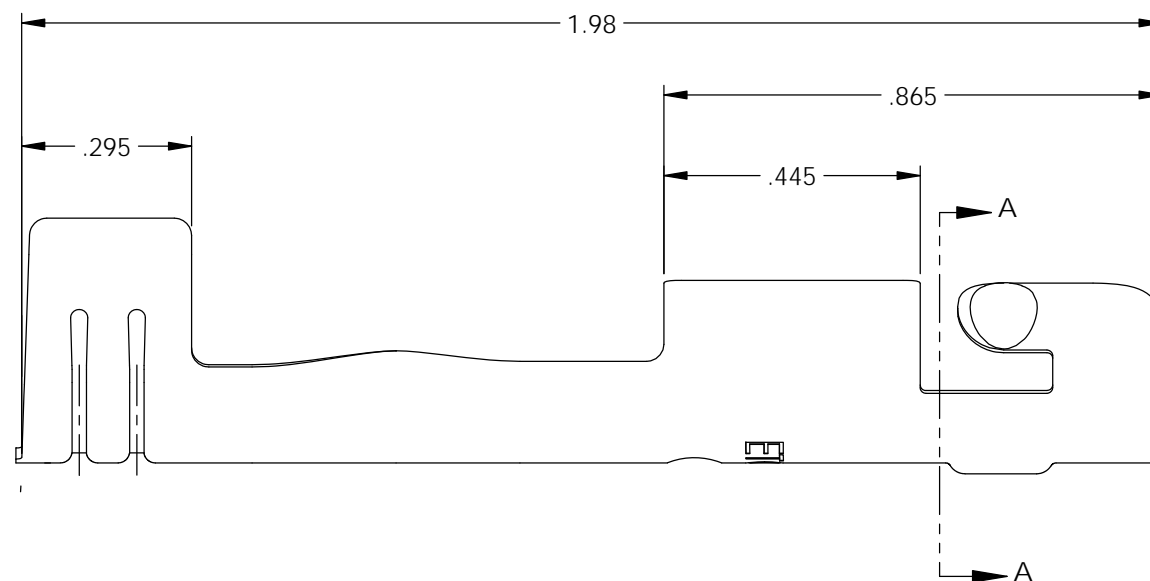
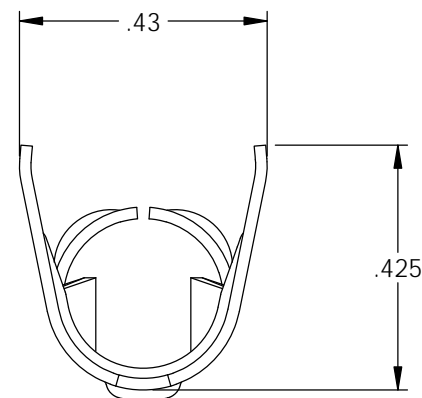
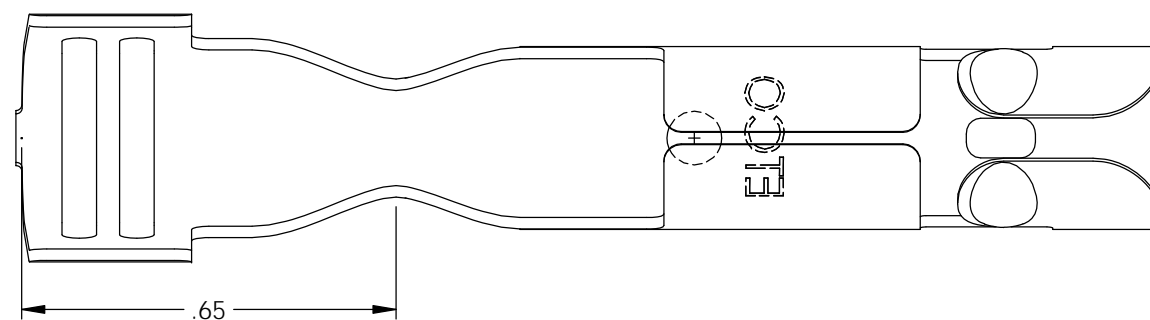


NOTES:

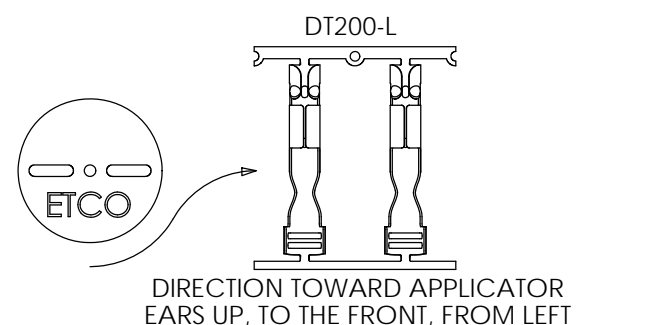
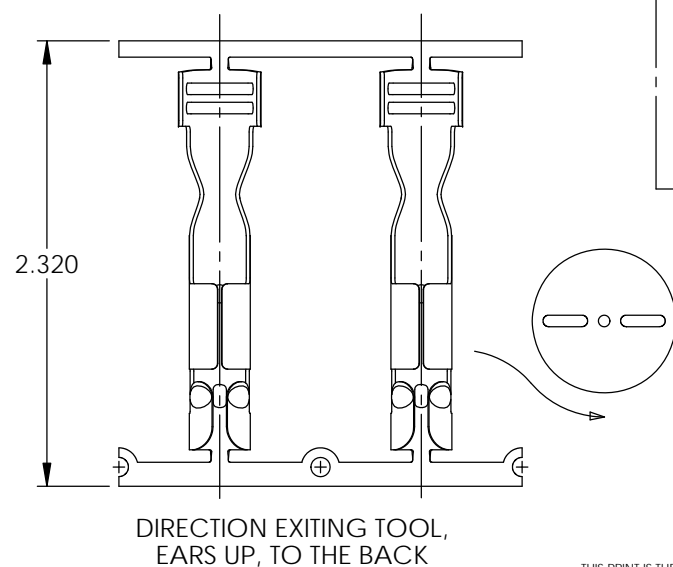
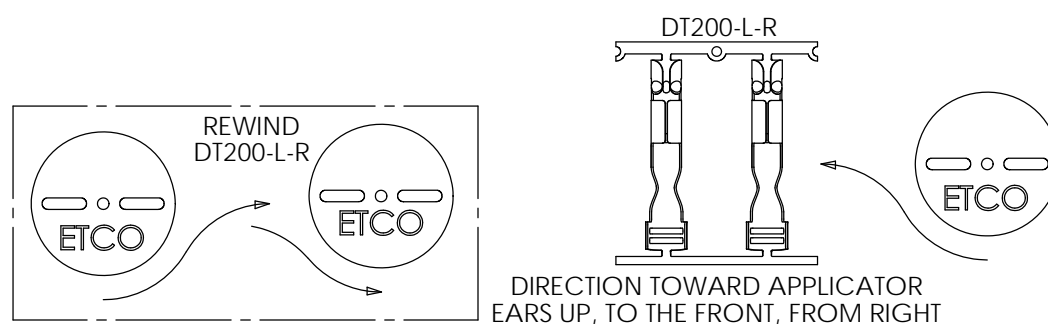
1. MATERIAL: .020 THICK BRASS
#3 TEMPER (3/4 HARD)
PER ETCO METAL CODE 0-0016.
2. PARTS MAY BE COATED WITH A LIGHT FILM OF LUBRICATION USED IN THE MANUFACTURING PROCESS.
3. WIRE RANGE: 7-8mm.
4. FOR MAXIMUM PERFORMANCE AND RELIABILITY, ALWAYS USE ETCO ENGINEERED IGNITION TERMINALS WITH ETCO AUTOMOTIVE INSULATORS.

P/C	DESCRIPTION	MAT'L	REWIND
09672	DT200-HB-L	NOTE 1	NO
15172	DT200-HB-L-R	NOTE 1	YES

Rev.	Description of Change/ SCN#	Date
1	Redrawn in SW from ACAD Org.Eng.Dwg.Date: 5/23/89	1/25/19



SECTION A-A
SCALE 4 : 1



THIS PRINT IS THE PROPERTY OF ETCO INCORPORATED. NO PART OF THIS DESIGN MAY BE USED IN ANY WAY WITHOUT WRITTEN CONSENT FROM ETCO INCORPORATED.

UNCONTROLLED COPY

<p>THIRD ANGLE PROJECTION TOLERANCES UNLESS OTHERWISE SPECIFIED INCHES: .XX - ±.030 .XXX - ±.015 ANGLES: ±5°</p>	TOOL NO. 2056	Title: Distributor Terminal	
		DO NOT SCALE DWG.	Drawn By: S.Johnson Date: 1/25/19
ETCO Incorporated Engineered Products 25 Bellows Street Warwick, RI 02888 Phone: (401) 467-2400 Fax: (401) 467-9230 www.ETCO.com		Design Controlled By: ETCO	Scale: 3X
Dwg. No.:		DT200-L cust	