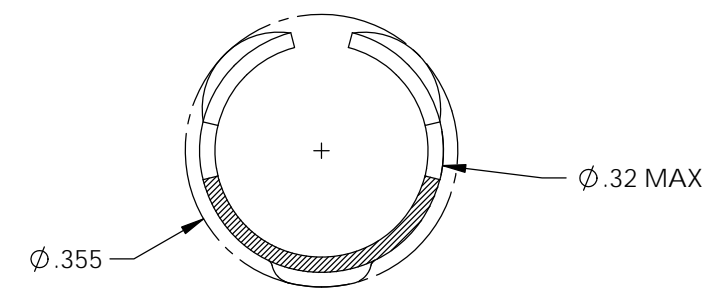
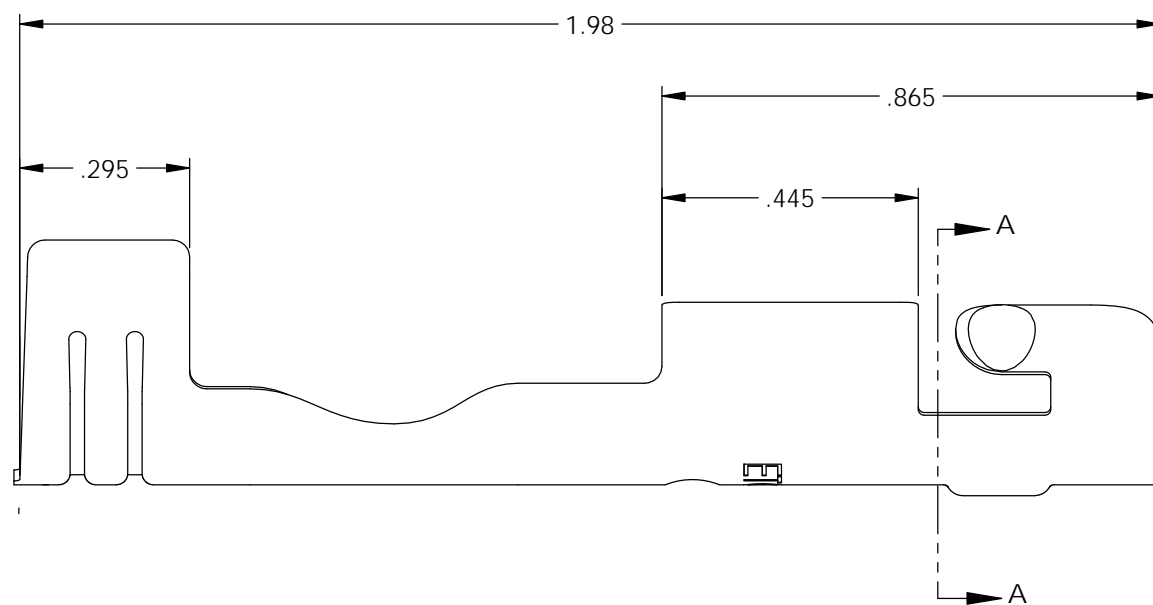
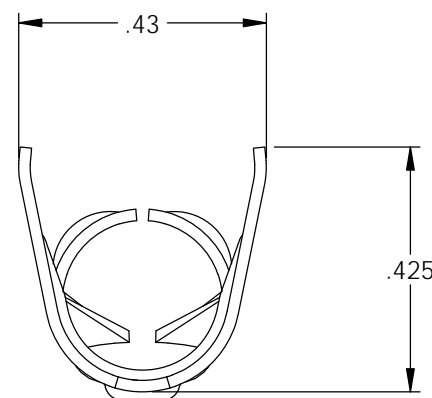
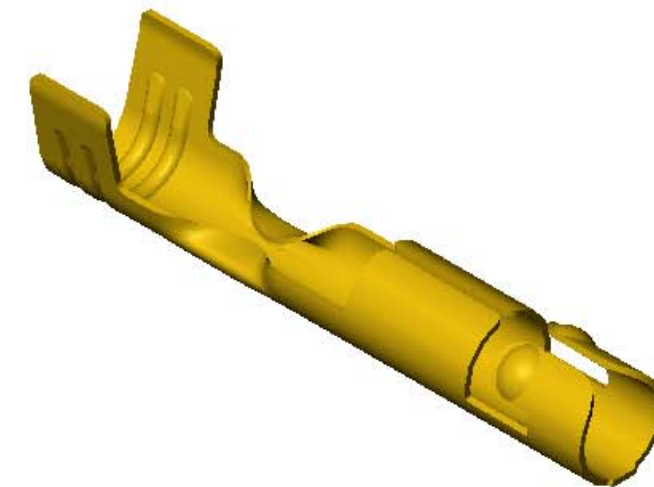
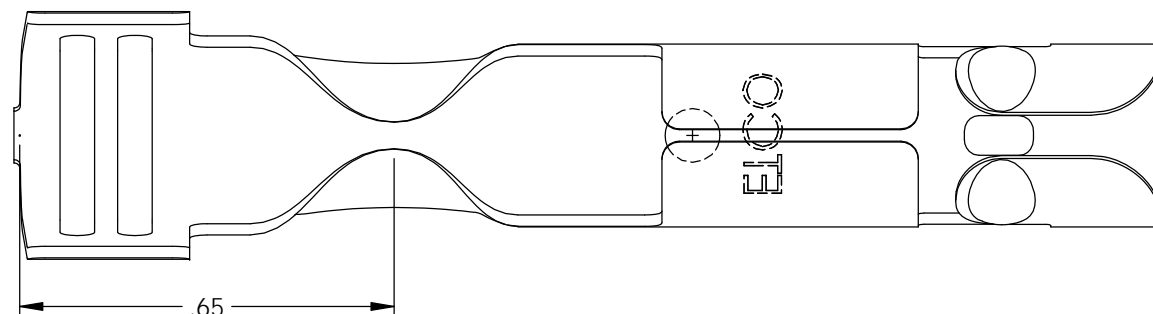


NOTES:

1. MATERIAL: .020 THICK BRASS,  
#3 TEMPER (3/4 HARD)  
PER ETCO METAL CODE 0-0016.
2. MATERIAL: .020 THICK S430 STAINLESS STEEL,  
ANNEALED TO TEMPER,  
PER ETCO METAL CODE 0-0069.
3. PARTS MAY BE COATED WITH A LIGHT FILM OF  
LUBRICATION USED IN THE MANUFACTURING PROCESS.
4. WIRE RANGE: 7-8mm.
5. PARTS ARE PRODUCED IN LOOSE PEICE FORM.
6. FOR MAXIMUM PERFORMANCE AND RELIABILITY,  
ALWAYS USE ETCO ENGINEERED IGNITION TERMINALS  
WITH ETCO AUTOMOTIVE INSULATORS.



P/C	DESCRIPTION	MAT'L
15350	DT200-HB-LB-X	NOTE 1

Rev.	Description of Change/ SCN#	Date
1	Redrawn in SW from ACAD Org.Eng.Dwg.Date: 10/24/89	1/25/19



SECTION A-A  
SCALE 4 : 1

# UNCONTROLLED COPY

 THIRD ANGLE PROJECTION TOLERANCES UNLESS OTHERWISE SPECIFIED INCHES: .XX - ±.030 .XXX - ±.015 ANGLES: ±5°	TOOL NO. <b>2056</b>	Title: <b>Distributor Terminal</b>		
		DO NOT SCALE DWG.	Drawn By: <b>S.Johnson</b>	Date: <b>1/25/19</b>
ETCO Incorporated Engineered Products 25 Bellows Street Warwick, RI 02888 Phone: (401) 467-2400 Fax: (401) 467-9230 www.ETCO.com		Design Controlled By: <b>ETCO</b>	Scale: <b>3X</b>	Size <b>B</b>
		Dwg. No.: <b>DT200-LB-X cust</b>		