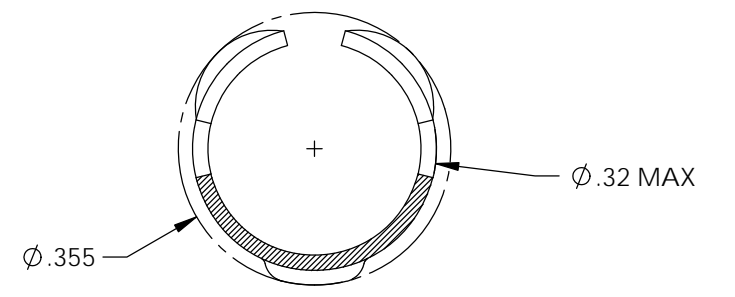
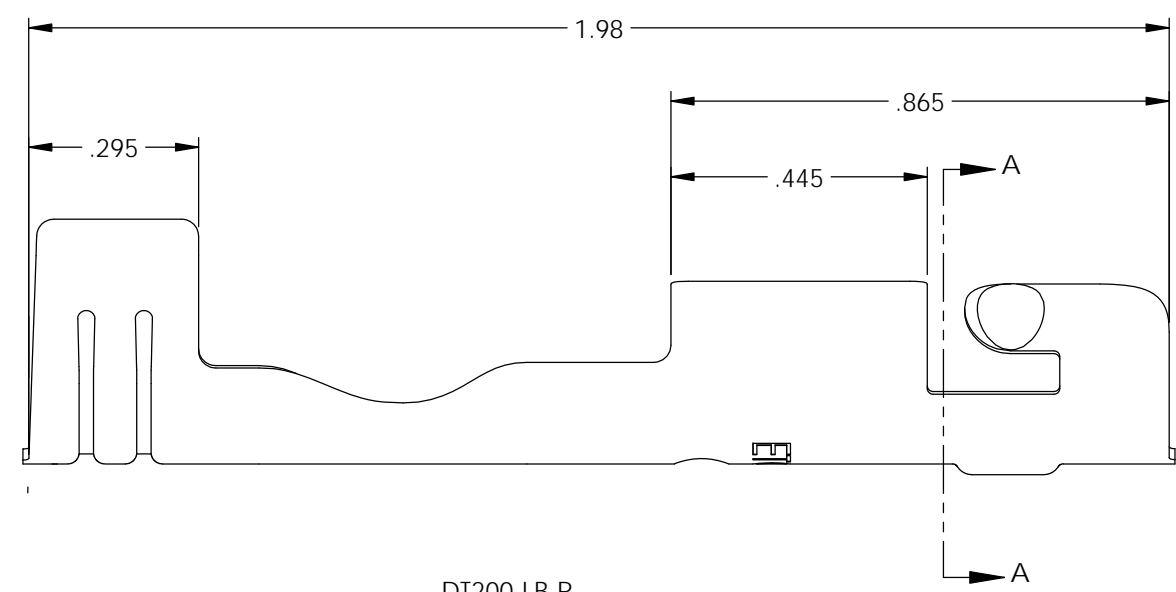
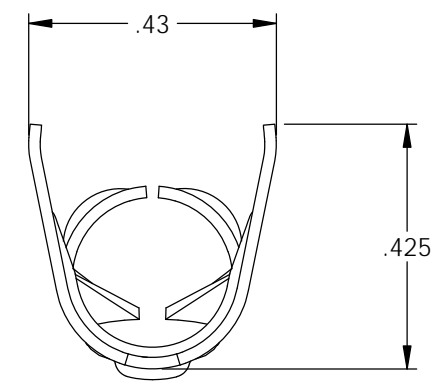
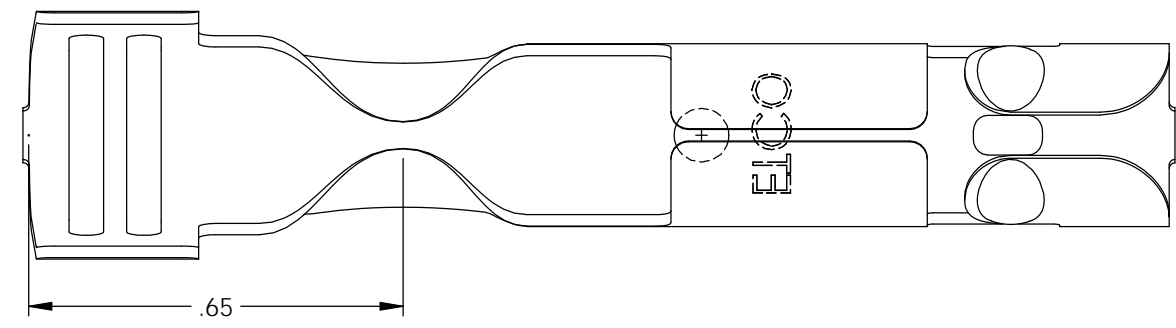
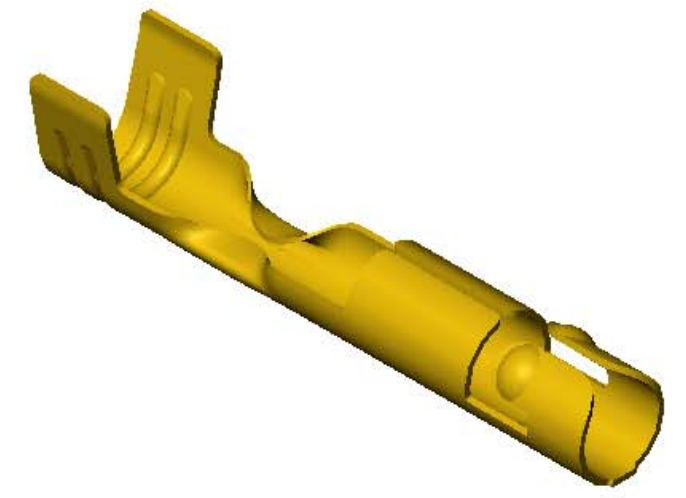


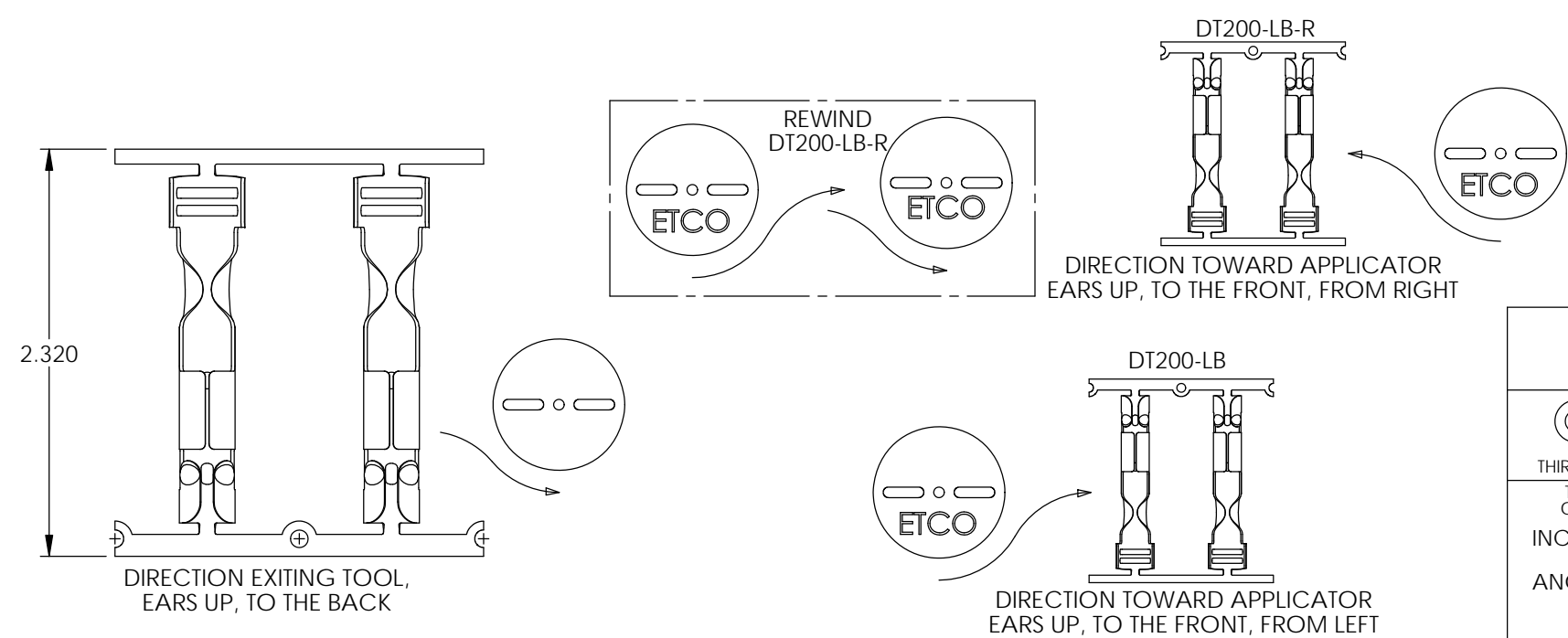
- NOTES:
1. MATERIAL: .020 THICK BRASS, #3 TEMPER (3/4 HARD) PER ETCO METAL CODE 0-0016.
 2. MATERIAL: .020 THICK S430 STAINLESS STEEL, ANNEALED TO TEMPER, PER ETCO METAL CODE 0-0069.
 3. PARTS MAY BE COATED WITH A LIGHT FILM OF LUBRICATION USED IN THE MANUFACTURING PROCESS.
 4. WIRE RANGE: 7-8mm.
 5. FOR MAXIMUM PERFORMANCE AND RELIABILITY, ALWAYS USE ETCO ENGINEERED IGNITION TERMINALS WITH ETCO AUTOMOTIVE INSULATORS.

P/C	DESCRIPTION	MAT'L	REWIND
09667	DT200-HB-LB	NOTE 1	NO
15312	DT200-SS-LB	NOTE 2	NO
15352	DT200-SS-LB-R	NOTE 2	YES
15173	DT200-HB-LB-R	NOTE 1	YES

Rev.	Description of Change/ SCN#	Date
1	Redrawn in SW from ACAD Org.Eng.Dwg.Date: 10/24/89	1/25/19



SECTION A-A
SCALE 4 : 1



THIS PRINT IS THE PROPERTY OF ETCO INCORPORATED. NO PART OF THIS DESIGN MAY BE USED IN ANY WAY WITHOUT WRITTEN CONSENT FROM ETCO INCORPORATED.

UNCONTROLLED COPY

<p>THIRD ANGLE PROJECTION TOLERANCES UNLESS OTHERWISE SPECIFIED INCHES: .XX - ±.030 .XXX - ±.015 ANGLES: ±5°</p>	TOOL NO.	Title: Distributor Terminal		
	2056	DO NOT SCALE DWG.	Drawn By: S.Johnson	Date: 1/25/19
	ETCO Incorporated Engineered Products 25 Bellows Street Warwick, RI 02888 Phone: (401) 467-2400 Fax: (401) 467-9230 www.ETCO.com	Design Controlled By:	Scale: 3X	Size B
		Dwg. No.:	DT200-LB cust	