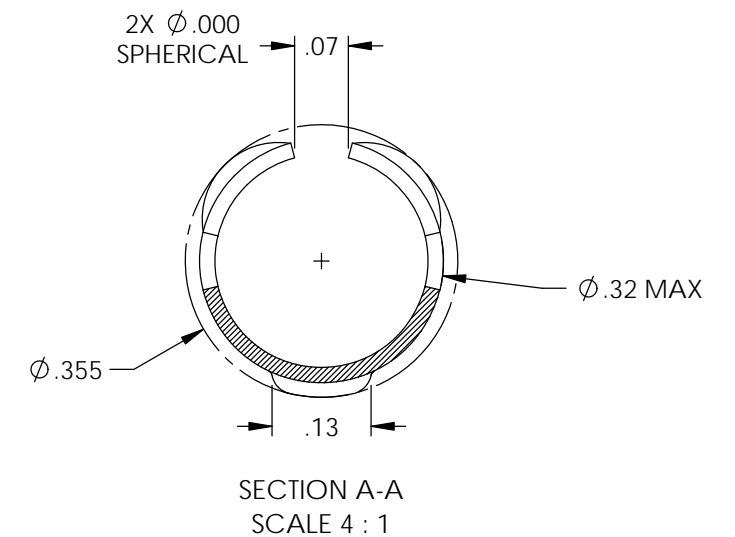
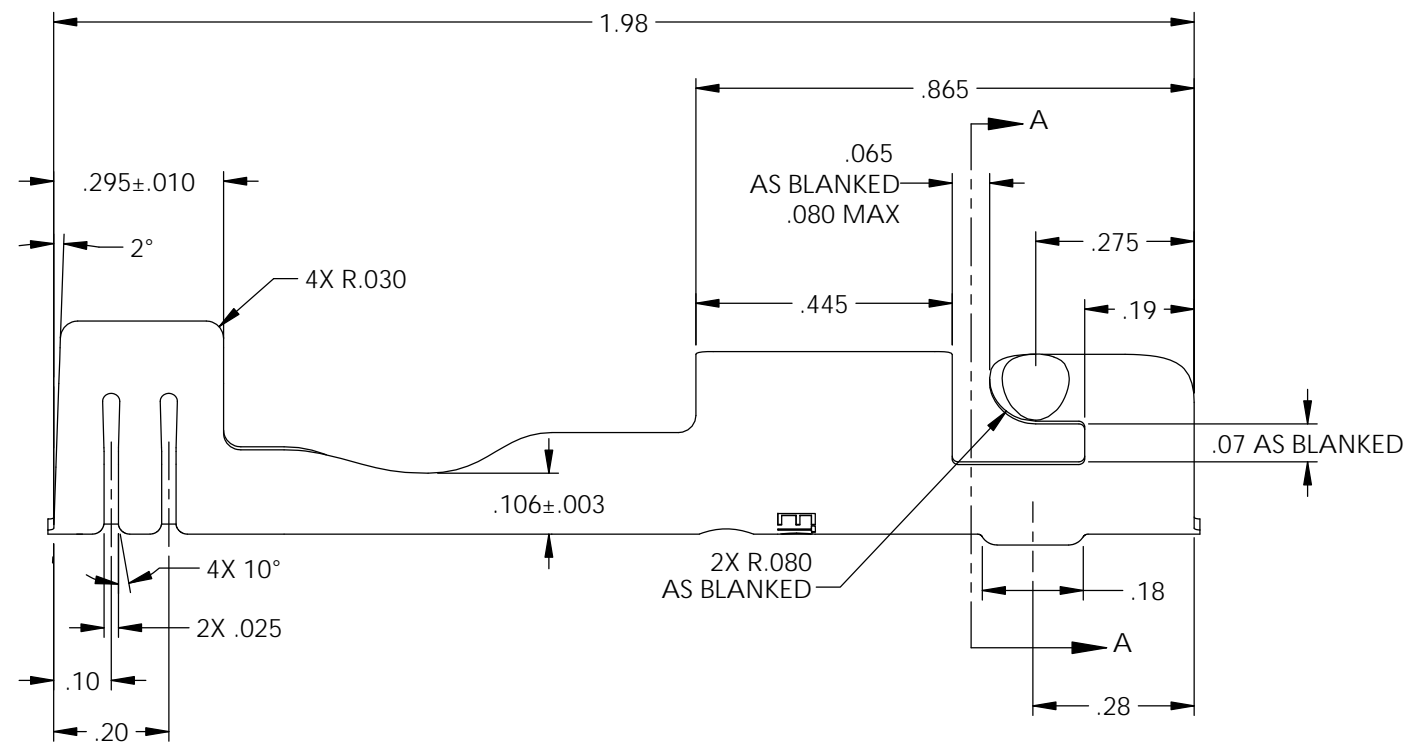
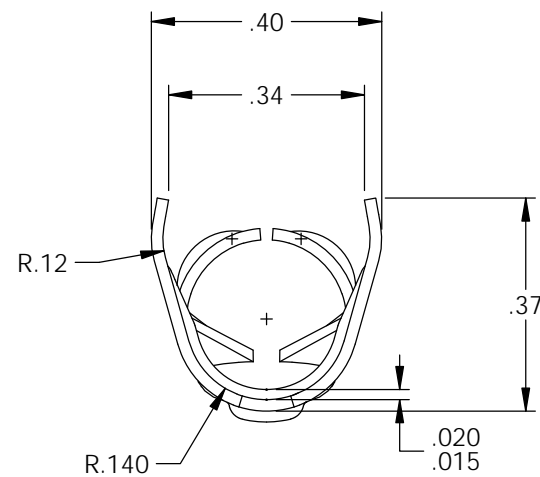
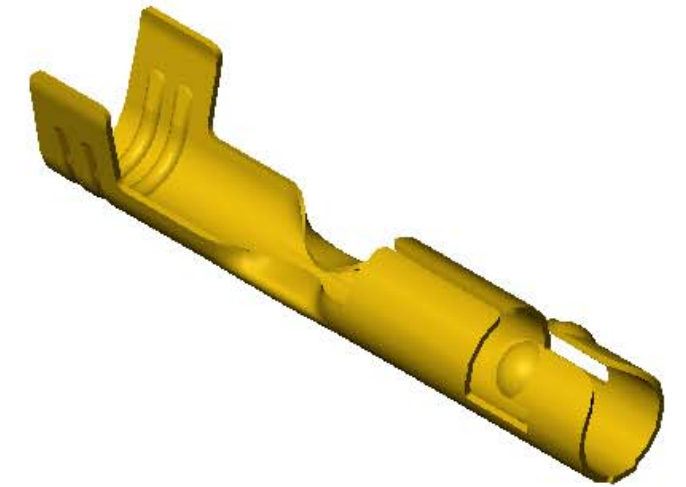
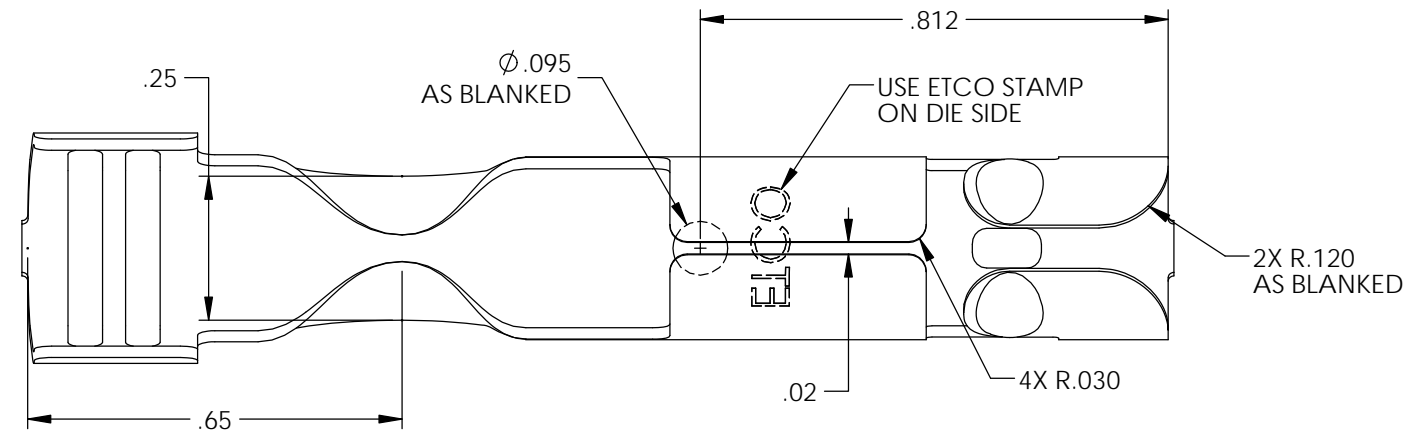


NOTES:

- MATERIAL: .020 THICK BRASS, #3 TEMPER (3/4 HARD) PER ETCO METAL CODE 0-0016.
- MATERIAL: .020 THICK S430 STAINLESS STEEL, ANNEALED TO TEMPER, PER ETCO METAL CODE 0-0069.
- TERMINAL MUST BE CAPABLE OF A 90° BEND IN THE FORWARD DIRECTION WITHOUT FRACTURE.
- PARTS MAY BE COATED WITH A LIGHT FILM OF LUBRICATION USED IN THE MANUFACTURING PROCESS.
- WIRE RANGE: 7mm.
- PARTS ARE PRODUCED IN LOOSE PEICE FORM.

P/C	DESCRIPTION	MAT'L
22035	DT207-HB-LB-X	NOTE 1

Rev.	Description of Change/ SCN#	Date
1	Redrawn in SW from ACAD Org.Eng.Dwg.Date: 2/11/93	1/25/19



(X) NUMBER INSIDE REFERS TO REVISION LEVEL DIMENSION WAS CHANGED ON

Approved For Manufacturing

<p>THIRD ANGLE PROJECTION TOLERANCES UNLESS OTHERWISE SPECIFIED INCHES: .XX - ±.010 .XXX - ±.005 MILLIMETERS: .X - ±.25 .XX - ±.13 ANGLES: ±2°</p>	<p>TOOL NO. 2056</p>	<p>Title: Distributor Terminal</p>		
		<p>DO NOT SCALE DWG.</p>	<p>Drawn By: S.Johnson</p>	<p>Date: 1/25/19</p>
<p>ETCO Incorporated Engineered Products 25 Bellows Street Warwick, RI 02888 Phone: (401) 467-2400 Fax: (401) 467-9230 www.ETCO.com</p>		<p>Design Controlled By: ETCO</p>	<p>Scale: 3X</p>	<p>Size B</p>
<p>Dwg. No.: DT207-LB-X</p>				