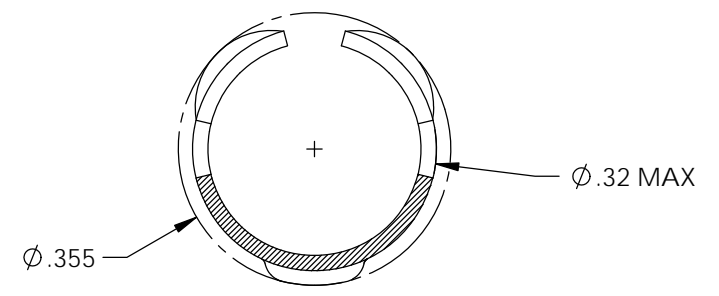
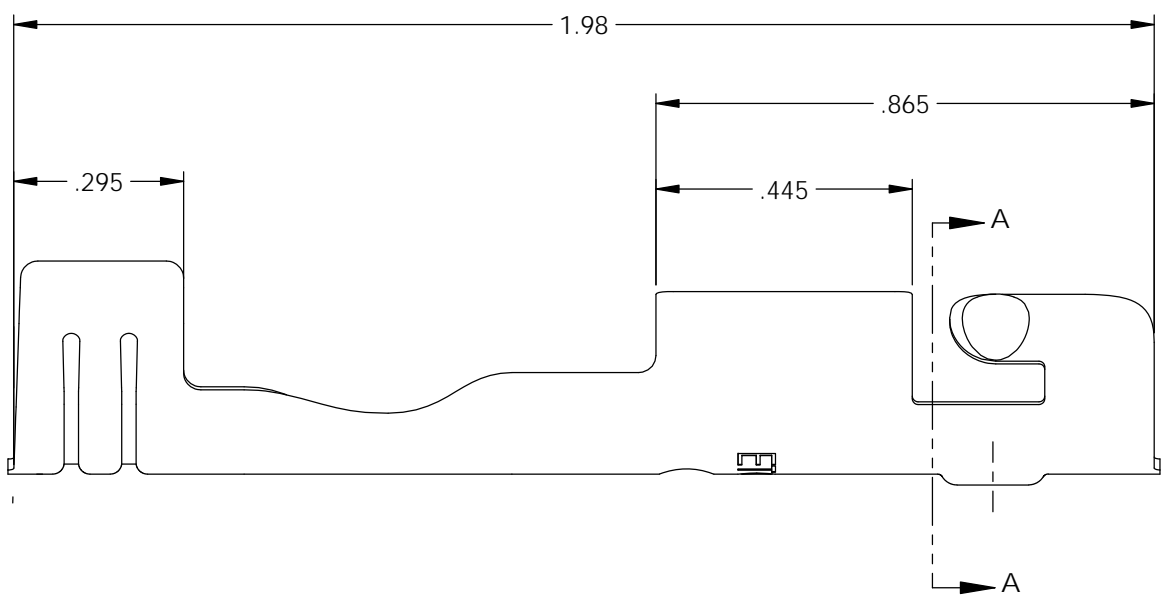
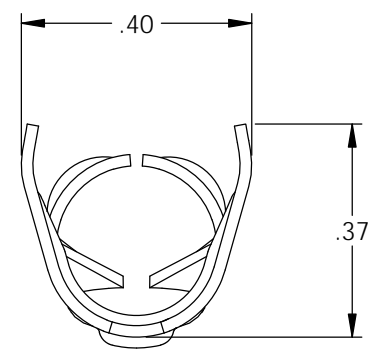
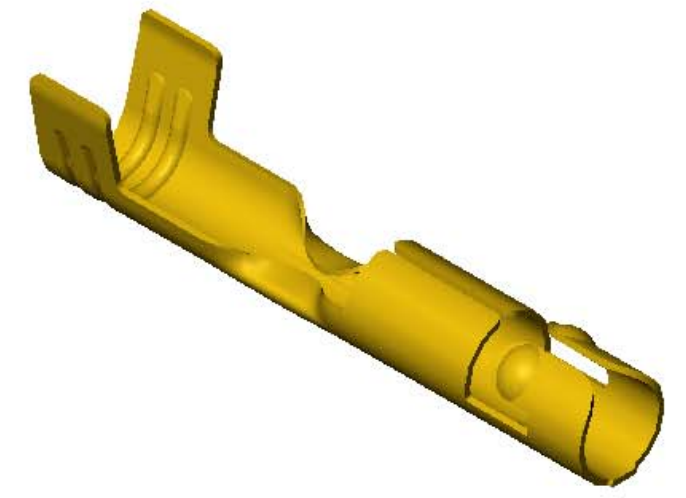
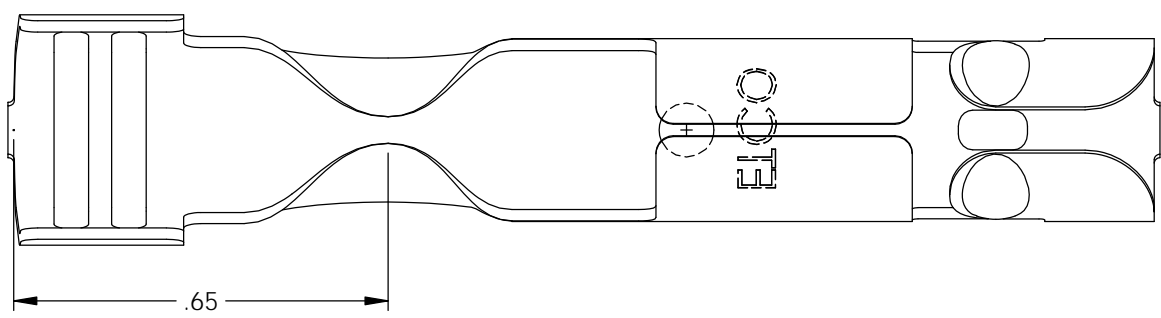


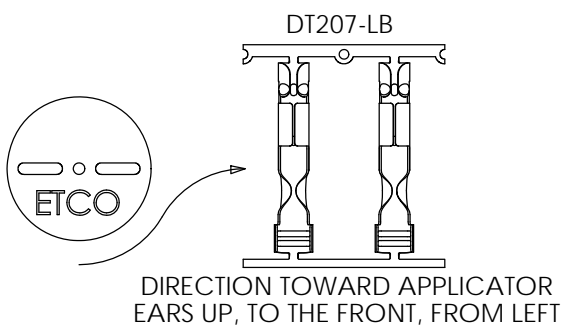
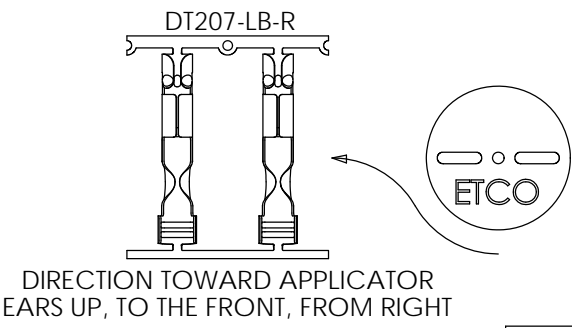
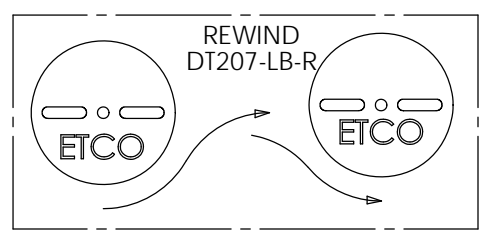
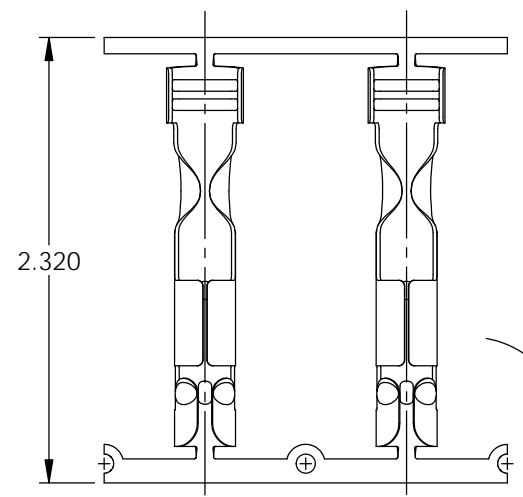
- NOTES:
1. MATERIAL: .020 THICK BRASS, #3 TEMPER (3/4 HARD) PER ETCO METAL CODE 0-0016.
 2. MATERIAL: .020 THICK S430 STAINLESS STEEL, ANNEALED TO TEMPER, PER ETCO METAL CODE 0-0069.
 3. PARTS MAY BE COATED WITH A LIGHT FILM OF LUBRICATION USED IN THE MANUFACTURING PROCESS.
 4. WIRE RANGE: 7mm.
 5. FOR MAXIMUM PERFORMANCE AND RELIABILITY, ALWAYS USE ETCO ENGINEERED IGNITION TERMINALS WITH ETCO AUTOMOTIVE INSULATORS.

P/C	DESCRIPTION	MAT'L	REWIND
15113	DT207-HB-LB	NOTE 1	NO
15174	DT207-HB-LB-R	NOTE 1	YES
22034	DT207-SS-LB	NOTE 2	NO

Rev.	Description of Change/ SCN#	Date
1	Redrawn in SW from ACAD Org.Eng.Dwg.Date: 2/11/93	1/25/19



SECTION A-A
SCALE 4 : 1



DIRECTION EXITING TOOL,
EARS UP, TO THE BACK

DIRECTION TOWARD APPLICATOR
EARS UP, TO THE FRONT, FROM LEFT

THIS PRINT IS THE PROPERTY OF ETCO INCORPORATED. NO PART OF THIS DESIGN MAY BE USED IN ANY WAY WITHOUT WRITTEN CONSENT FROM ETCO INCORPORATED.

UNCONTROLLED COPY

 THIRD ANGLE PROJECTION TOLERANCES UNLESS OTHERWISE SPECIFIED INCHES: .XX - ±.030 .XXX - ±.015 ANGLES: ±5°	TOOL NO. 2056	Title: Distributor Terminal	
		DO NOT SCALE DWG.	Drawn By: S.Johnson Date: 1/25/19
		Design Controlled By: ETCO	Scale: 3X Size B
		Dwg. No.: DT207-LB cust	
		ETCO Incorporated Engineered Products 25 Bellows Street Warwick, RI 02888 Phone: (401) 467-2400 Fax: (401) 467-9230 www.ETCO.com	