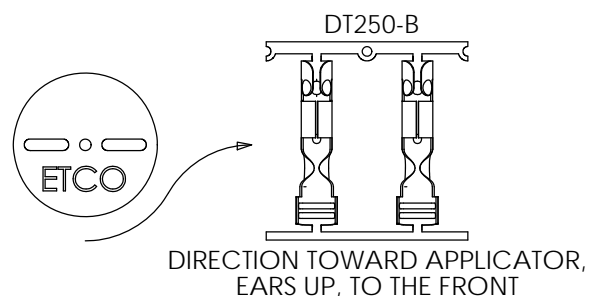
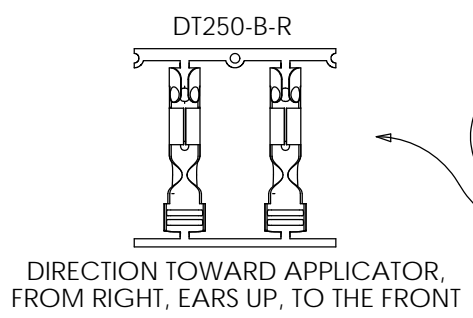
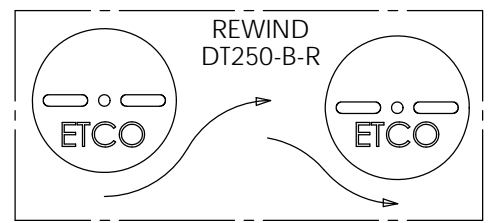
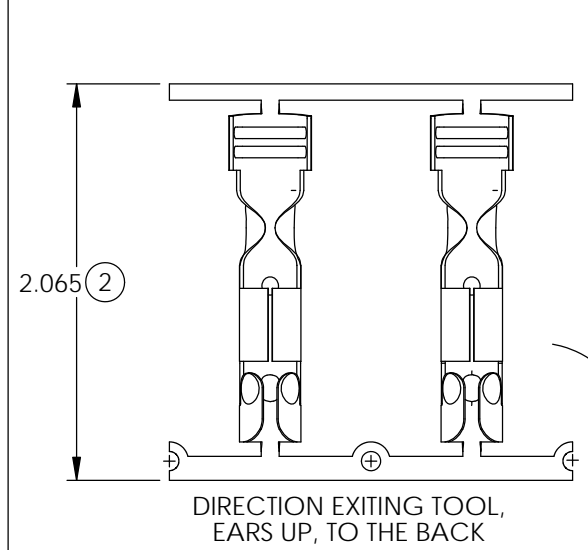
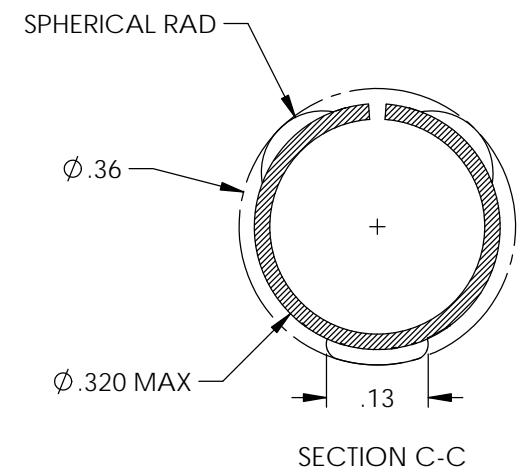
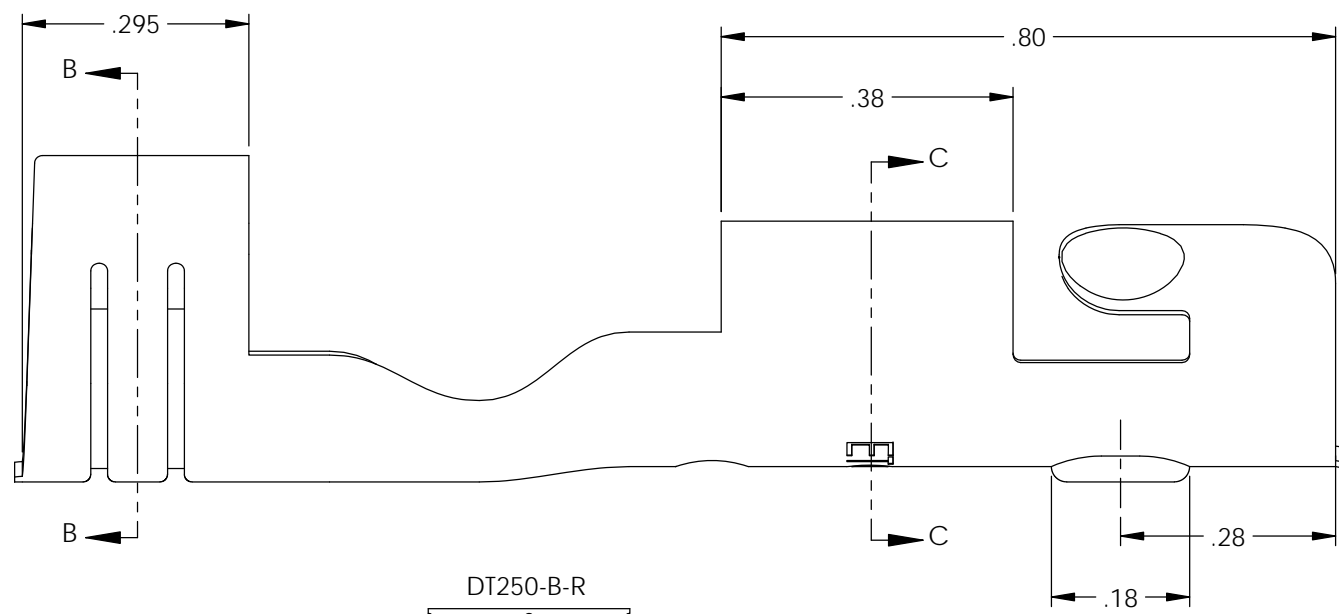
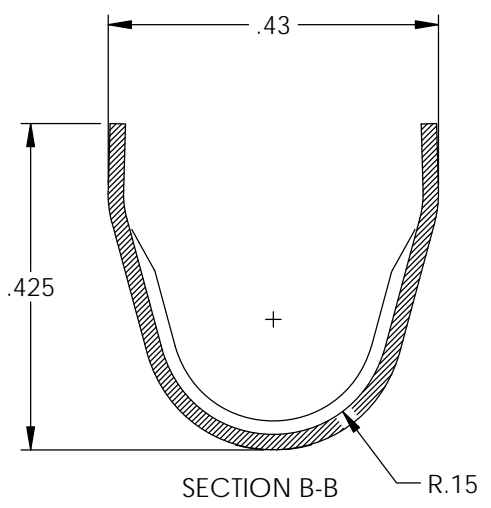
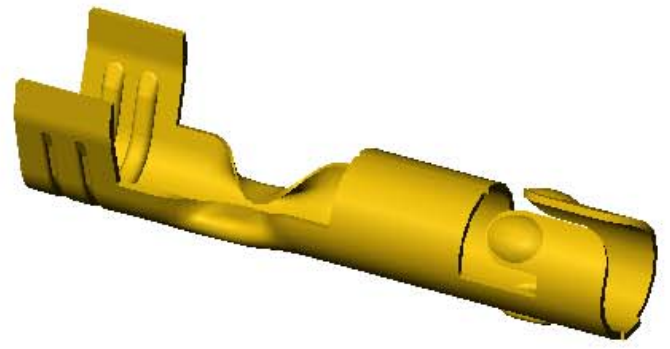
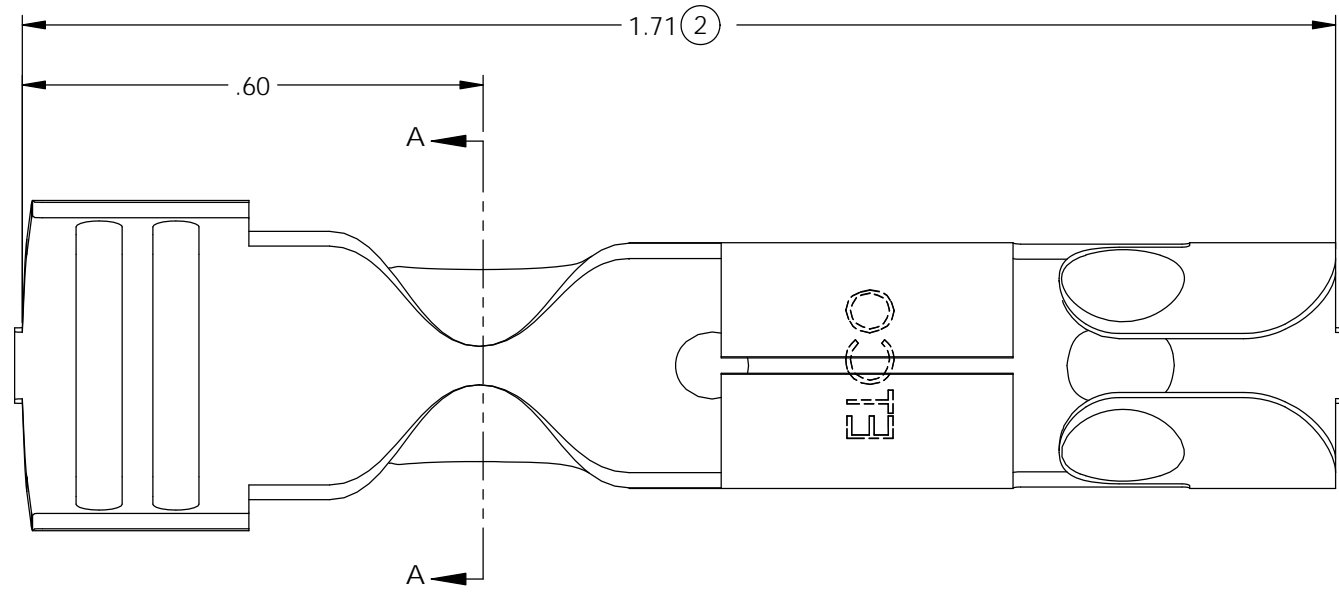
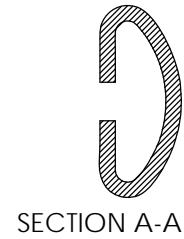


NOTES:

- MATERIAL: .020 THICK BRASS
#3 TEMPER (3/4 HARD)
PER ETCO METAL CODE 0-0019.
- MATERIAL: .020 THICK S430 STAINLESS STEEL
ANEALLED TO TEMPER
PER ETCO METAL CODE 0-0072.
- MATERIAL: .020 THICK, ELECTRO-GALVANIZED ZINC ^①
PLATED STEEL, #3 TEMPER (1/4 HARD)
PER ETCO METAL CODE 0-0029.
- TERMINAL MUST BE CAPABLE OF A 90° BEND IN THE
FORWARD DIRECTION WITHOUT FRACTURE.
- PARTS MAY BE COATED WITH A LIGHT FILM OF
LUBRICATION USED IN THE MANUFACTURING PROCESS.
- WIRE RANGE: 8mm.

P/C	DESCRIPTION	MAT'L	REWIND
15074	DT250-HB-B	NOTE 1	NO
15176	DT250-HB-B-R	NOTE 1	YES
15317	DT250-SS-B	NOTE 2	NO
15329	DT250-SS-B-R	NOTE 2	YES
22037	DT250-BZS-B	NOTE 3	NO

Rev.	Description of Change/ SCN#	Date
1	ECR# 4870 SCJ Redrawn in SW from ACAD Org.Eng.Dwg.Date: 10/24/89	4/04/19
2	ECR# 6008 SCJ	6/12/20



UNCONTROLLED COPY

<p>THIRD ANGLE PROJECTION TOLERANCES UNLESS OTHERWISE SPECIFIED INCHES: .XX - ±.030 .XXX - ±.015 ANGLES: ±5°</p>	TOOL NO. 2049	Title: Distributor Terminal	
		DO NOT SCALE DWG.	Drawn By: S.Johnson Date: 4/04/19 Design Control By: ETCO Scale: 4X Size B
		Dwg. No.: DT250-B cust	
		ETCO Incorporated Engineered Products 25 Bellows Street Warwick, RI 02888 Phone: (401) 467-2400 Fax: (401) 467-9230 www.ETCO.com	