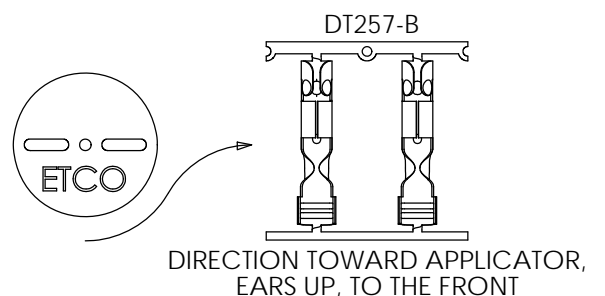
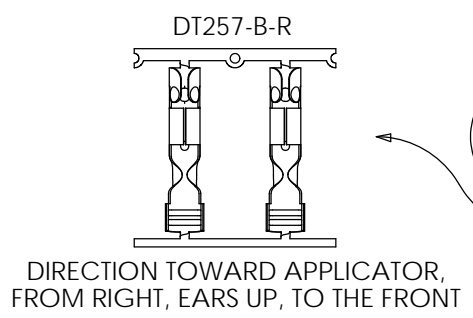
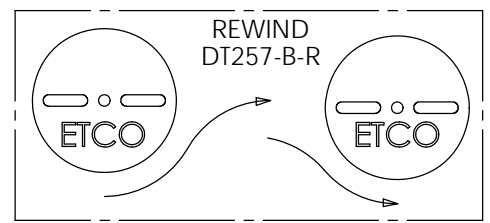
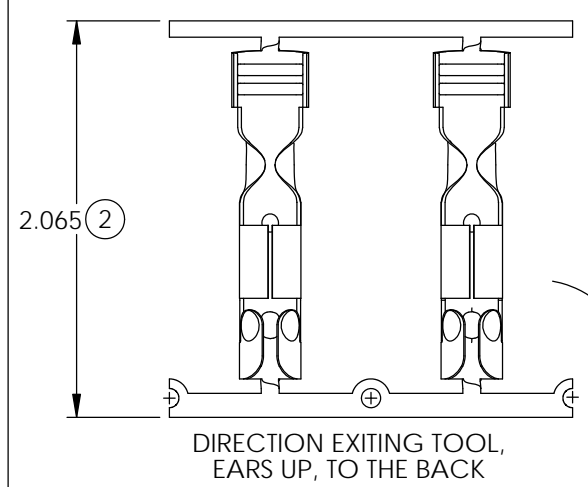
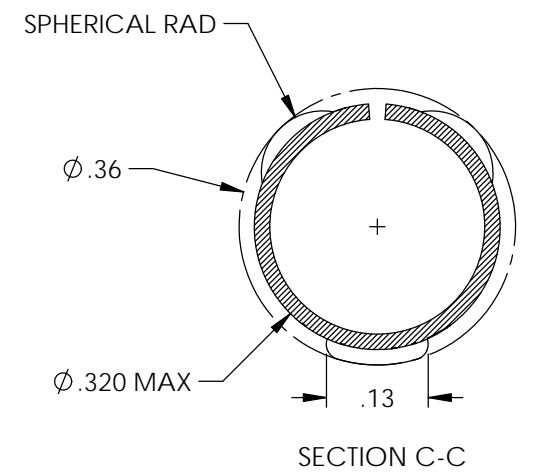
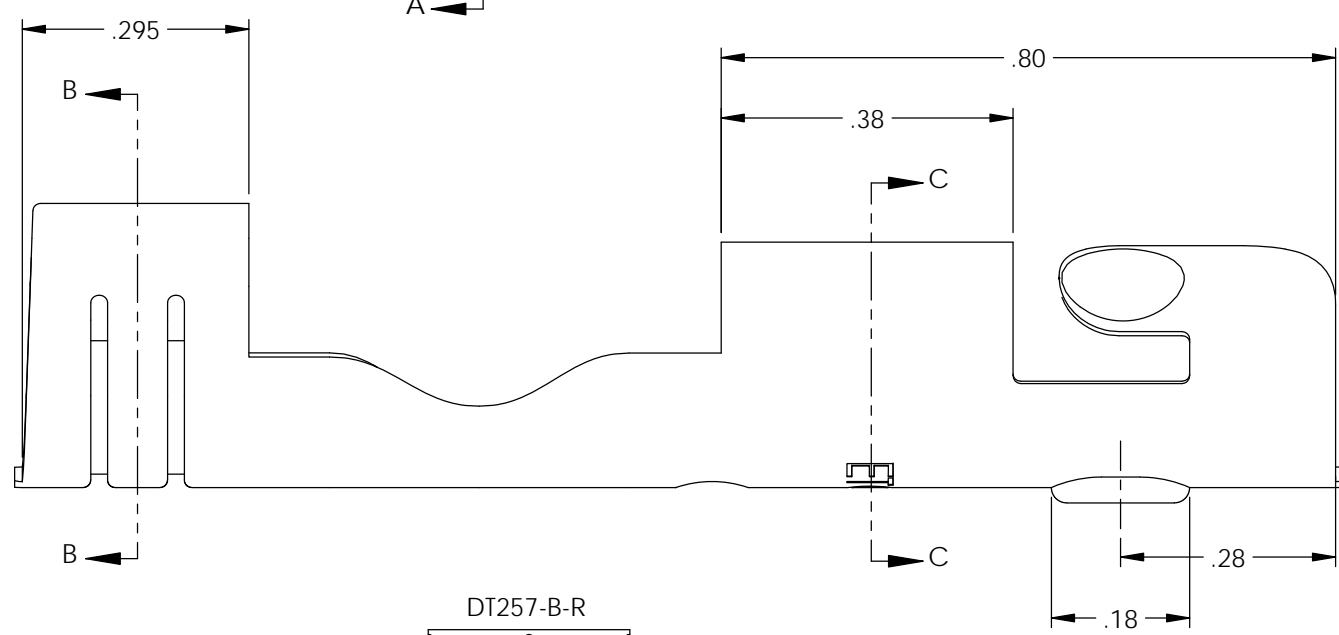
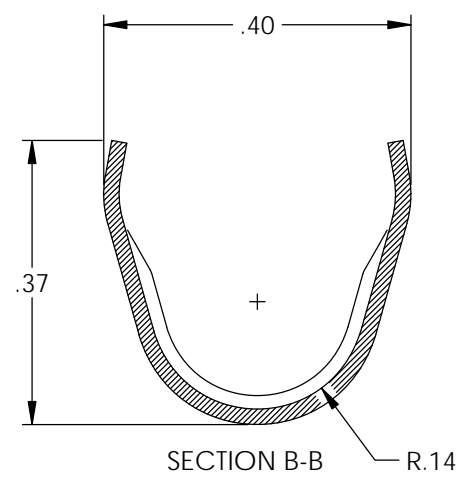
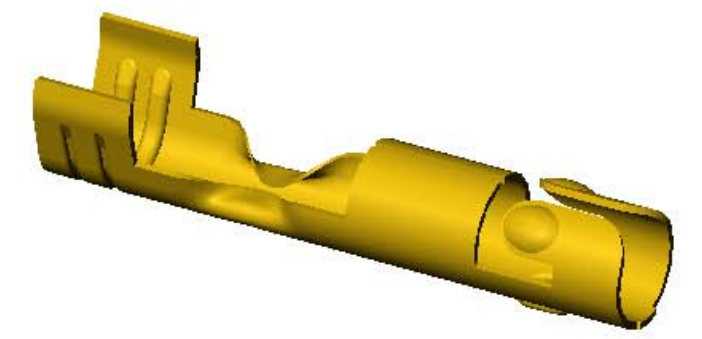
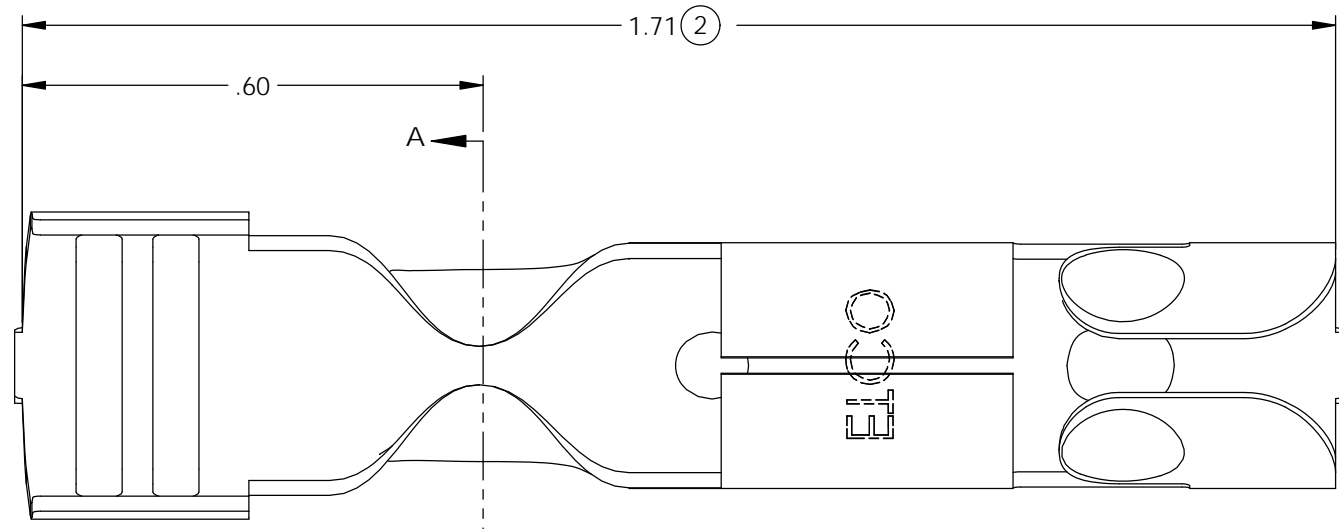
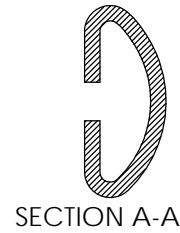


NOTES:

- MATERIAL: .020 THICK BRASS  
#3 TEMPER (3/4 HARD)  
PER ETCO METAL CODE 0-0019.
- MATERIAL: .020 THICK S430 STAINLESS STEEL  
ANEALLED TO TEMPER  
PER ETCO METAL CODE 0-0072.
- TERMINAL MUST BE CAPABLE OF A 90° BEND IN THE FORWARD DIRECTION WITHOUT FRACTURE.
- PARTS MAY BE COATED WITH A LIGHT FILM OF LUBRICATION USED IN THE MANUFACTURING PROCESS.
- WIRE RANGE: 7mm.

P/C	DESCRIPTION	MAT'L	REWIND
15100	DT257-HB-B	NOTE 1	NO
15178	DT257-HB-B-R	NOTE 1	YES
15320	DT257-SS-B-R	NOTE 2	YES
15327	DT257-SS-B	NOTE 2	NO

Rev.	Description of Change/ SCN#	Date
1	Redrawn in SW from ACAD Org.Eng.Dwg.Date: 5/29/91	4/04/19
2	ECR# 6008 SCJ	6/12/20



# UNCONTROLLED COPY

<p>THIRD ANGLE PROJECTION TOLERANCES UNLESS OTHERWISE SPECIFIED INCHES: .XX - ±.030 .XXX - ±.015 ANGLES: ±5°</p>	<p>TOOL NO. <b>2049</b></p>	<p>Title: <b>Distributor Terminal</b></p>		
		<p>DO NOT SCALE DWG.</p>	<p>Drawn By: <b>S.Johnson</b></p>	<p>Date: <b>4/04/19</b></p>
<p>ETCO Incorporated Engineered Products 25 Bellows Street Warwick, RI 02888 Phone: (401) 467-2400 Fax: (401) 467-9230 www.ETCO.com</p>		<p>Design Control By: <b>ETCO</b></p>	<p>Scale: <b>4X</b></p>	<p>Size <b>B</b></p>
		<p>Dwg. No.: <b>DT257-B cust</b></p>		