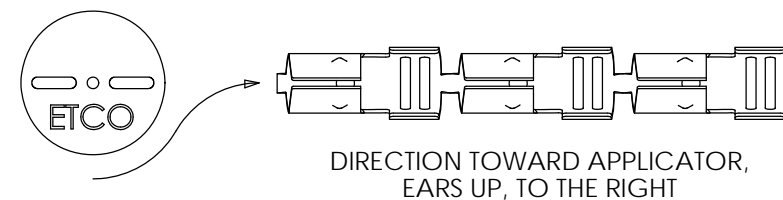
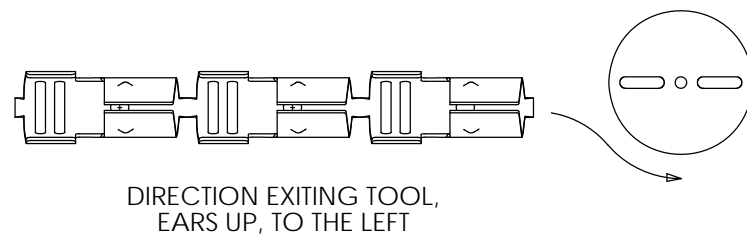
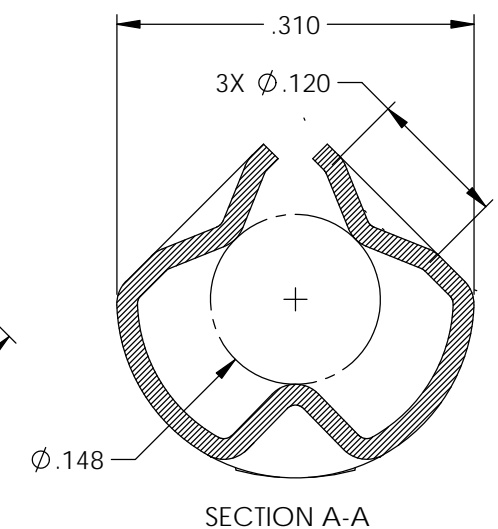
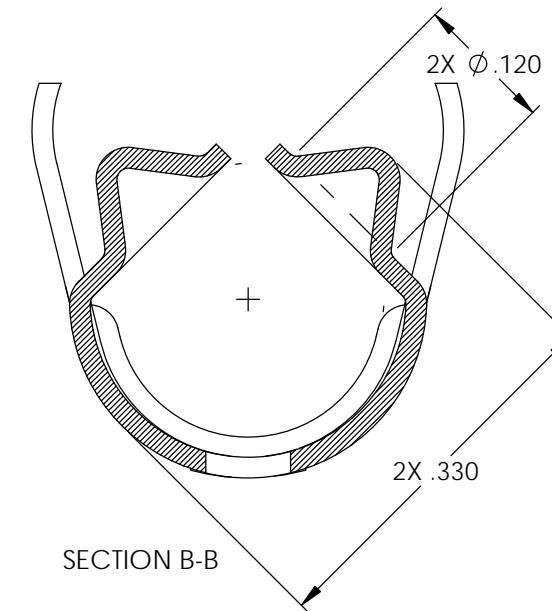
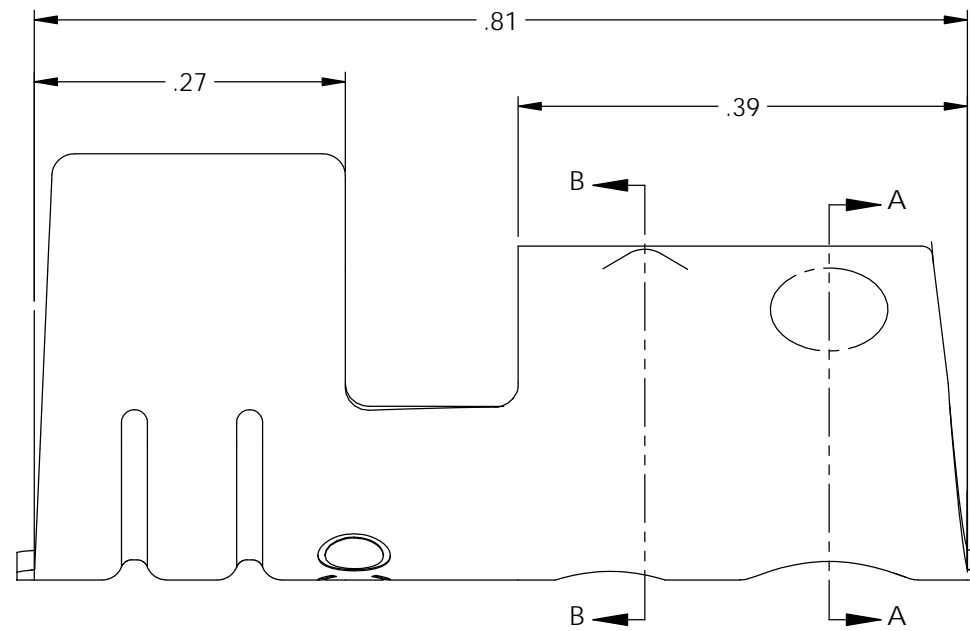
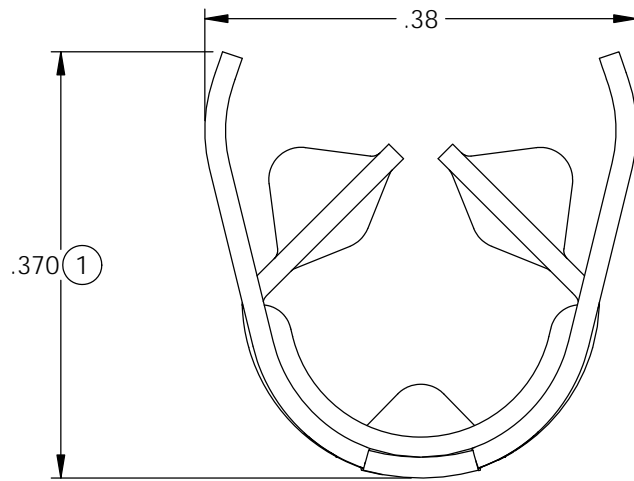
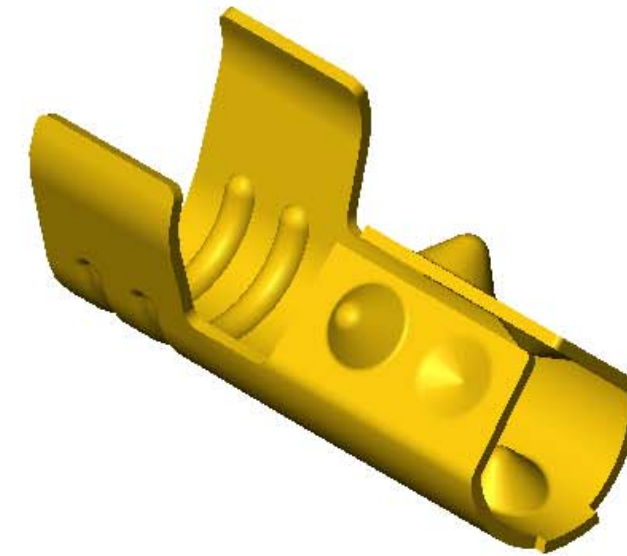
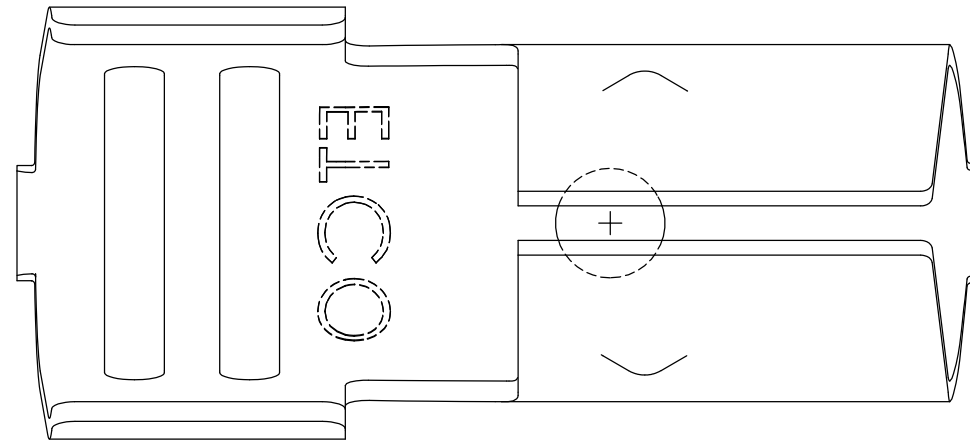


NOTES:

1. MATERIAL: .018 THICK BRASS
#3 TEMPER (3/4 HARD)
PER ETCO METAL CODE 0-0009.
2. MATERIAL: .018 THICK S430 STAINLESS STEEL
BRIGHT ANNEALED
PER ETCO METAL CODE 0-0108.
4. PARTS MAY BE COATED WITH A LIGHT FILM OF LUBRICATION USED IN THE MANUFACTURING PROCESS.
5. WIRE RANGE: 7mm.

P/C	DESCRIPTION	MAT'L
15025	DT40-HB	NOTE 1
15321	DT40-SS	NOTE 2

Rev.	Description of Change/ SCN#	Date
1	ECR# 5389 SCJ Redrawn in SW from ACAD Org.Eng.Dwg.Date: 12/12/88	12/12/18



THIS PRINT IS THE PROPERTY OF ETCO INCORPORATED. NO PART OF THIS DESIGN MAY BE USED IN ANY WAY WITHOUT WRITTEN CONSENT FROM ETCO INCORPORATED.

UNCONTROLLED COPY

<p>THIRD ANGLE PROJECTION TOLERANCES UNLESS OTHERWISE SPECIFIED INCHES: .XX - ±.030 .XXX - ±.015 ANGLES: ±5°</p>	<p>TOOL NO. 2030</p>	<p>Title: DISTRIBUTOR TERMINAL</p>		
		<p>DO NOT SCALE DWG.</p>	<p>Drawn By: S.Johnson</p>	<p>Date: 12/12/18</p>
<p>ETCO Incorporated Engineered Products 25 Bellows Street Warwick, RI 02888 Phone: (401) 467-2400 Fax: (401) 467-9230 www.ETCO.com</p>		<p>Design Controlled By: ETCO</p>	<p>Scale: 6X</p>	<p>Size B</p>
		<p>Dwg. No.: DT40 cust</p>		