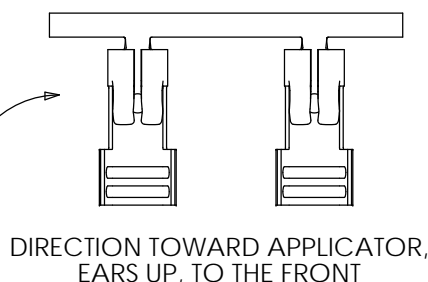
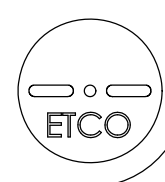
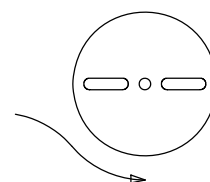
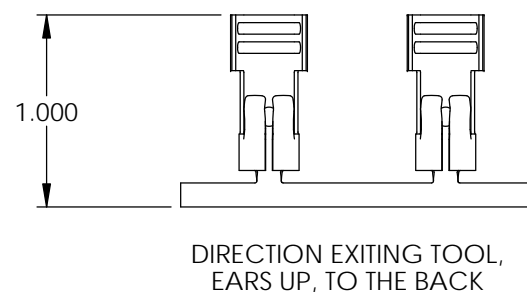
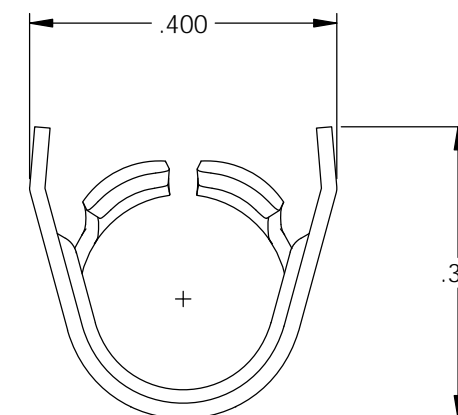
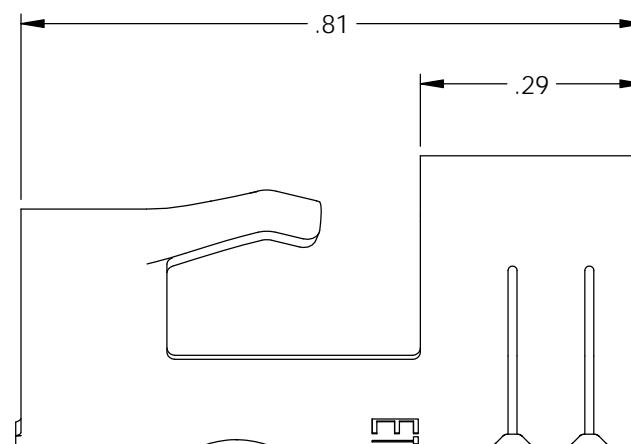
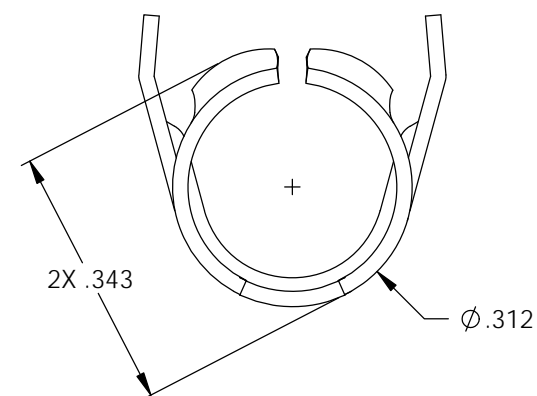
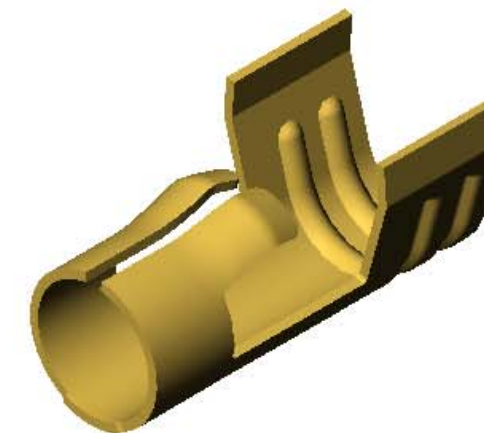
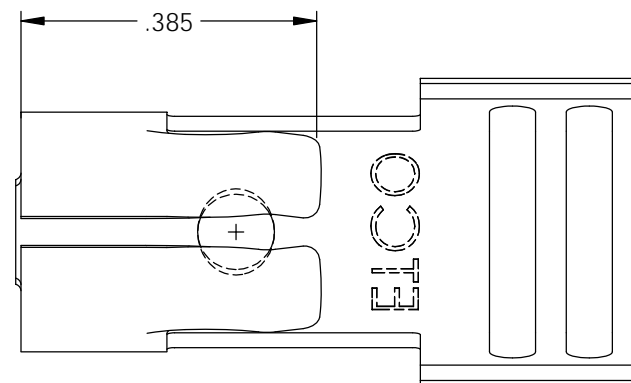


NOTES:

1. MATERIAL: .020 THICK BRASS
#4 TEMPER (FULL HARD)
PER ETCO METAL CODE 0-0010.
2. MATERIAL: .020 THICK ELECTRO-GALVANIZED ZINC
PLATED STEEL, #3 TEMPER (1/4 HARD)
PER ETCO METAL CODE 0-0127.
3. PARTS MAY BE COATED WITH A LIGHT FILM OF
LUBRICATION USED IN THE MANUFACTURING PROCESS.
4. WIRE RANGE: 8mm.

P/C	DESCRIPTION	MAT'L
15069	DT60-HB-W	NOTE 1
22038	DT60-BZS-W	NOTE 2

Rev.	Description of Change/ SCN#	Date
1	Redrawn in ACAD from ACAD Org.Eng.Dwg.Date: 12/08/87	11/19/18



UNCONTROLLED COPY

THIRD ANGLE PROJECTION
TOLERANCES UNLESS OTHERWISE SPECIFIED
INCHES: .XX - ±.030
.XXX - ±.015
ANGLES: ±5°

TOOL NO.
2046



Title: Distributor Terminal	
DO NOT SCALE DWG.	Drawn By: S.Johnson Date: 11/19/18
ETCO Incorporated Engineered Products 25 Bellows Street Warwick, RI 02888 Phone: (401) 467-2400 Fax: (401) 467-9230 www.ETCO.com	Design Control By: ETCO Scale: 4X Size: B
Dwg. No.: DT60-W cust	