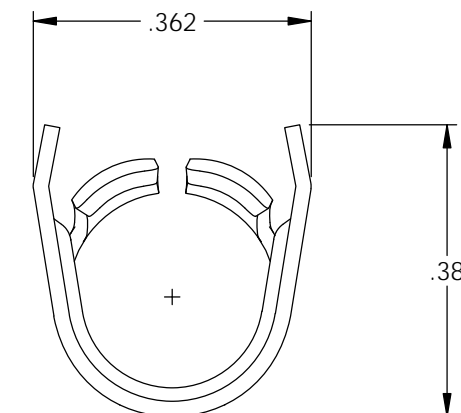
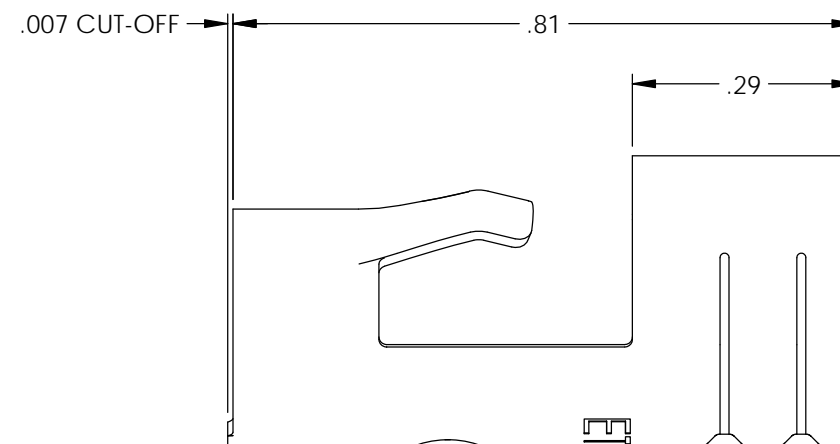
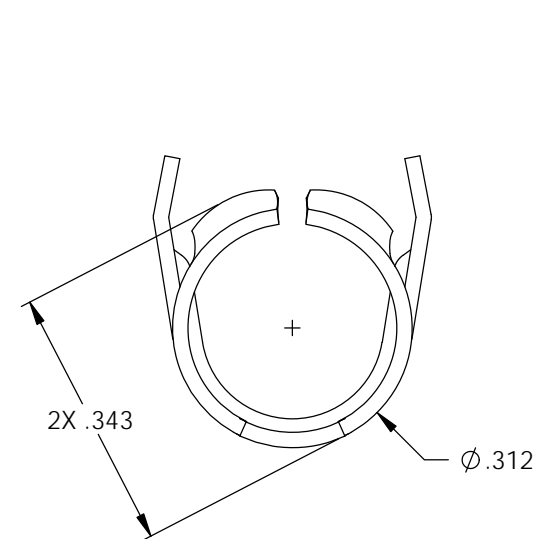
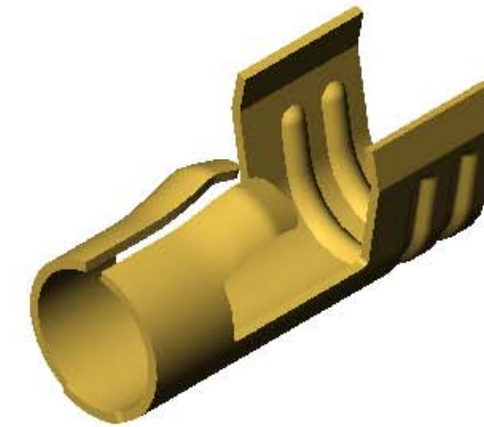
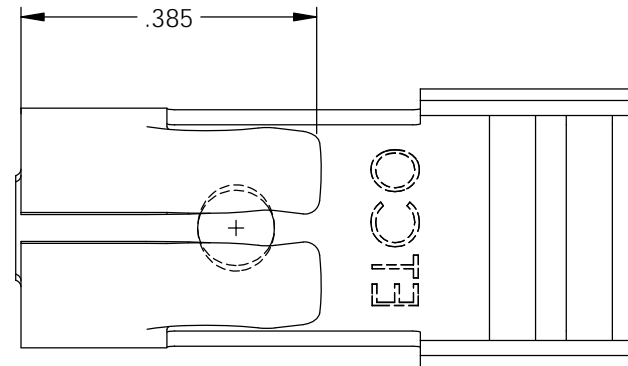


NOTES:

1. MATERIAL: .020 THICK BRASS  
#4 TEMPER (FULL HARD)  
PER ETCO METAL CODE 0-0010.
2. PARTS MAY BE COATED WITH A LIGHT FILM OF LUBRICATION USED IN THE MANUFACTURING PROCESS.
3. WIRE RANGE: 7mm.
4. PARTS ARE PRODUCED IN LOOSE PIECE FORM.

P/C	DESCRIPTION	MAT'L
10730	DT60-HB-X	NOTE 1

Rev.	Description of Change/ SCN#	Date
1	Redrawn in ACAD from ACAD Org.Eng.Dwg.Date: 5/31/89	11/19/18



# UNCONTROLLED COPY

<p>THIRD ANGLE PROJECTION TOLERANCES UNLESS OTHERWISE SPECIFIED INCHES: .XX - ±.030 .XXX - ±.015 ANGLES: ±5°</p>	<p>TOOL NO. <b>2046</b></p>	<p>Title: <b>Distributor Terminal</b></p>		
		<p>DO NOT SCALE DWG.</p>	<p>Drawn By: <b>S.Johnson</b></p>	<p>Date: <b>11/19/18</b></p>
<p>ETCO Incorporated Engineered Products 25 Bellows Street Warwick, RI 02888 Phone: (401) 467-2400 Fax: (401) 467-9230 www.ETCO.com</p>		<p>Design Control By: <b>ETCO</b></p>	<p>Scale: <b>4X</b></p>	<p>Size <b>B</b></p>
		<p>Dwg. No.: <b>DT60-X cust</b></p>		