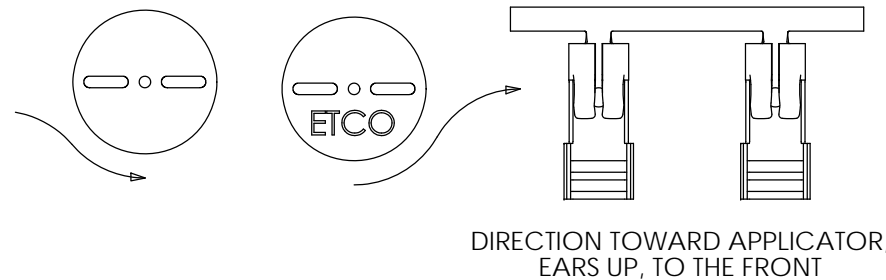
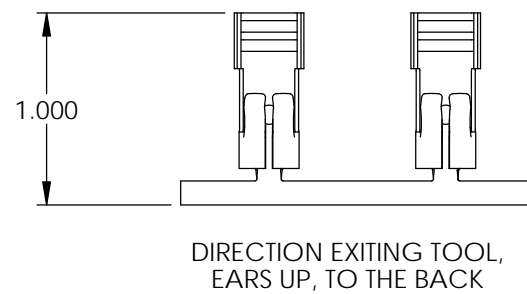
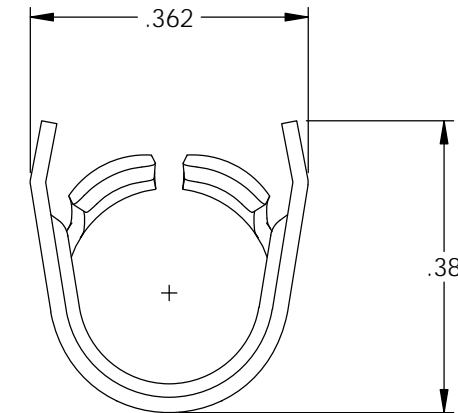
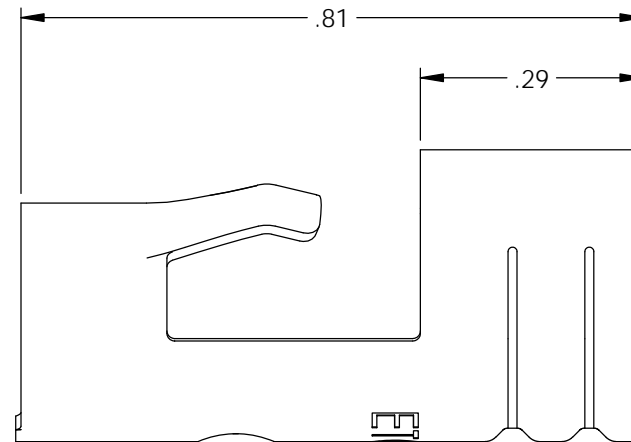
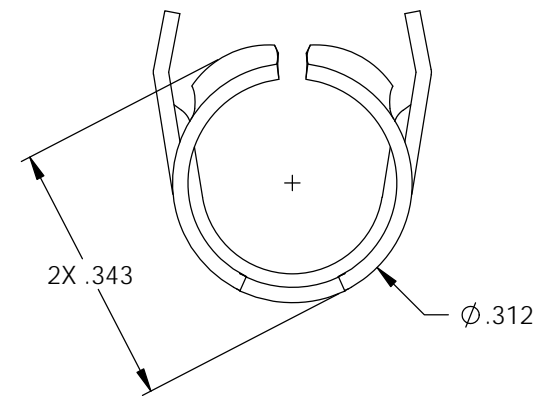
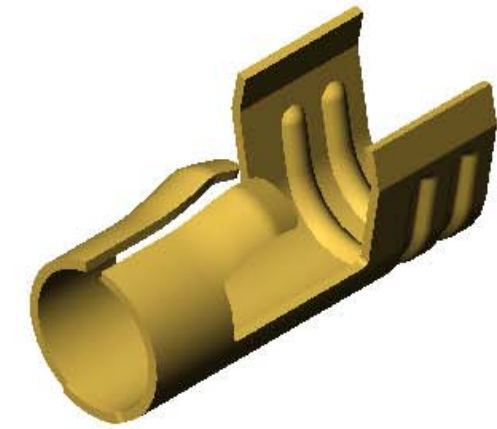
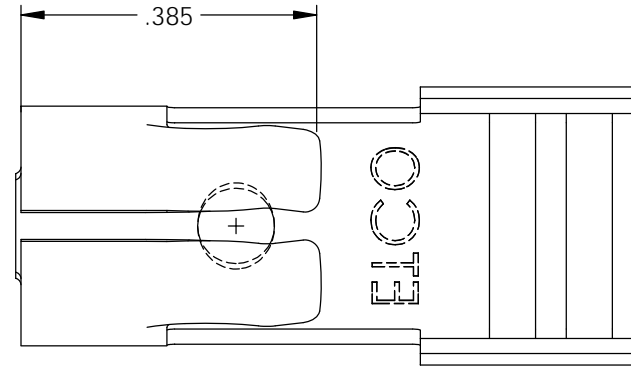


NOTES:

1. MATERIAL: .020 THICK BRASS
#4 TEMPER (FULL HARD)
PER ETCO METAL CODE 0-0010.
2. MATERIAL: .020 THICK S430 STAINLESS STEEL
BRIGHT ANNEALED
PER ETCO METAL CODE 0-0092.
3. PARTS MAY BE COATED WITH A LIGHT FILM OF LUBRICATION USED IN THE MANUFACTURING PROCESS.
4. WIRE RANGE: 7mm.

P/C	DESCRIPTION	MAT'L
11410	DT60-HB	NOTE 1
15314	DT60-SS	NOTE 2

Rev.	Description of Change/ SCN#	Date
1	Redrawn in ACAD from ACAD Org.Eng.Dwg.Date: 5/31/89	11/19/18



UNCONTROLLED COPY

<p>THIRD ANGLE PROJECTION TOLERANCES UNLESS OTHERWISE SPECIFIED INCHES: .XX - ±.030 .XXX - ±.015 ANGLES: ±5°</p>	<p>TOOL NO. 2046</p>	<p>Title: Distributor Terminal</p>		
		<p>DO NOT SCALE DWG.</p>	<p>Drawn By: S.Johnson</p>	<p>Date: 11/19/18</p>
<p>ETCO Incorporated Engineered Products 25 Bellows Street Warwick, RI 02888 Phone: (401) 467-2400 Fax: (401) 467-9230 www.ETCO.com</p>		<p>Design Control By: ETCO</p>	<p>Scale: 4X</p>	<p>Size B</p>
		<p>Dwg. No.: DT60 cust</p>		