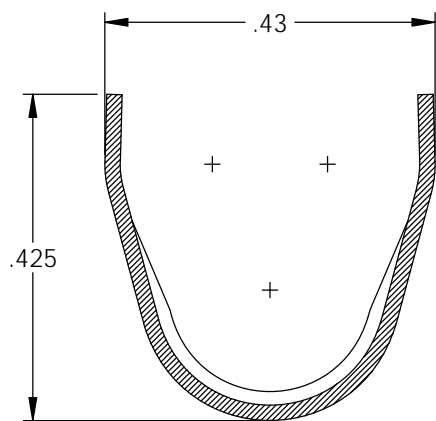
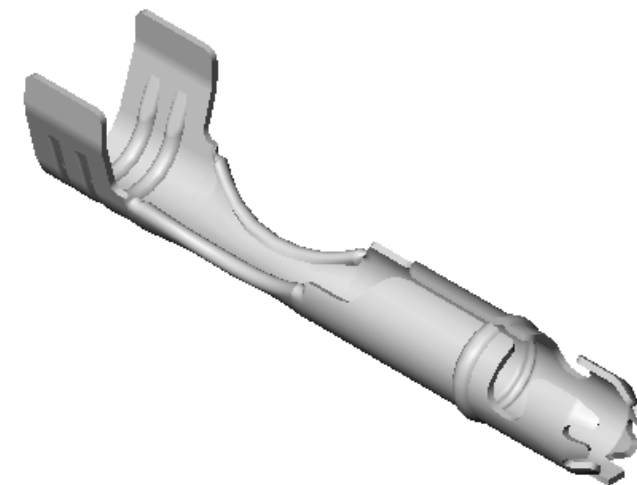
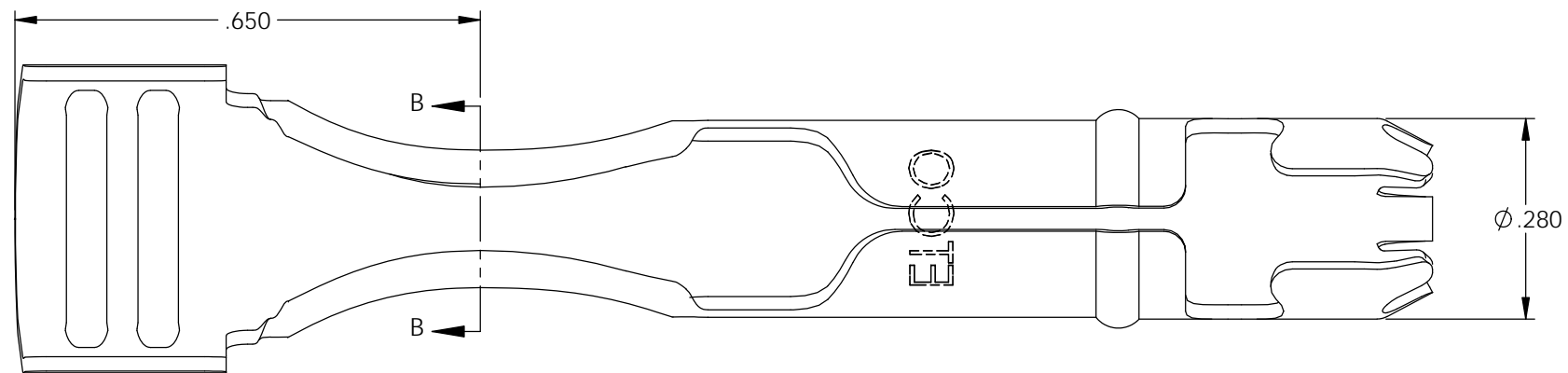


NOTES:

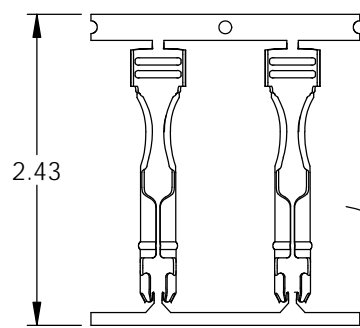
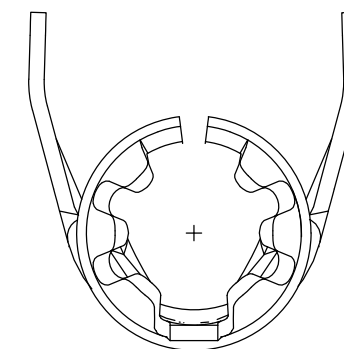
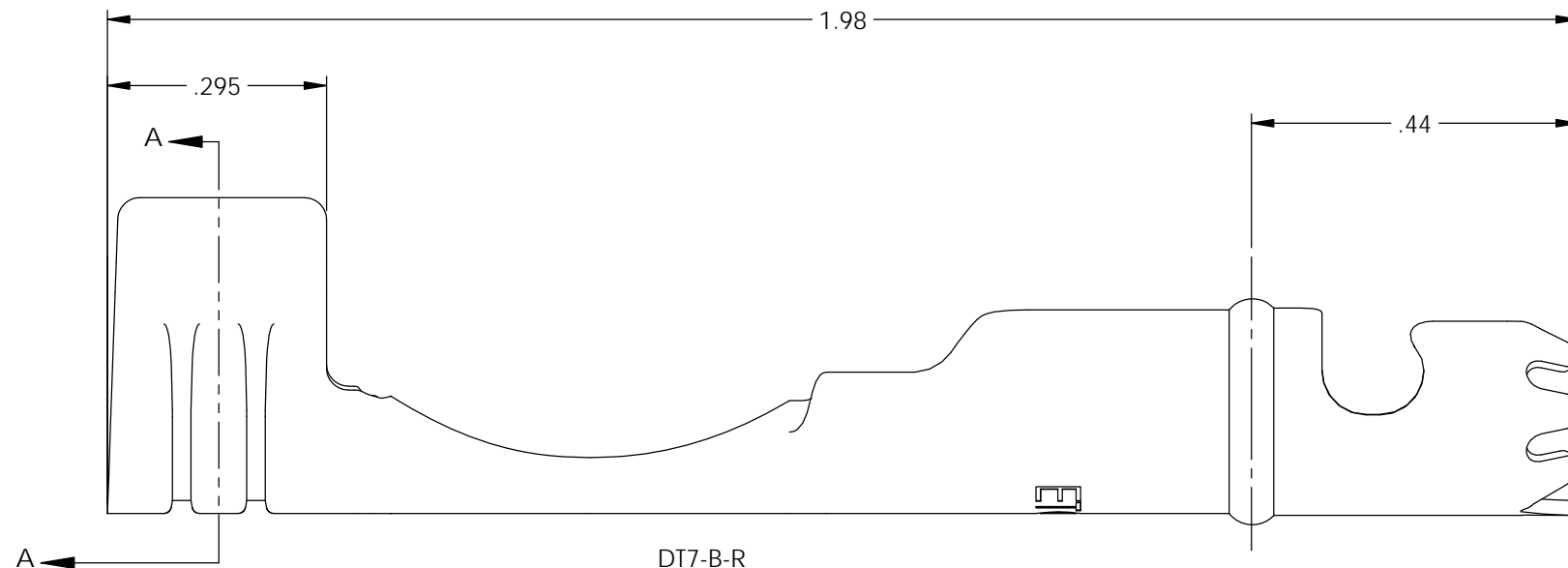
- MATERIAL: .020 THICK BRASS
#3 TEMPER (3/4 HARD)
PER ETCO METAL CODE 0-0006.
- MATERIAL: .020 THICK S430 STAINLESS STEEL
BRIGHT ANNEALED
PER ETCO METAL CODE 0-0053.
- MATERIAL: .020 THICK, ELECTRO-GALVANIZED ZINC (2)
PLATED STEEL, #3 TEMPER (1/4 HARD)
PER ETCO METAL CODE 0-0103.
- PARTS MAY BE COATED WITH A LIGHT FILM OF LUBRICATION USED IN THE MANUFACTURING PROCESS.
- WIRE RANGE: 7-8mm.

P/C	DESCRIPTION	MAT'L	REWIND
15115	DT7-HB-B	NOTE 1	NO
15175	DT7-HB-B-R	NOTE 1	YES
15304	DT7-SS-B	NOTE 2	NO
15315	DT7-SS-B-R	NOTE 2	YES
22026	DT7-BZS-B	NOTE 3	NO

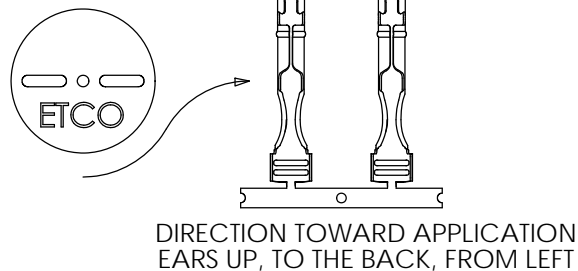
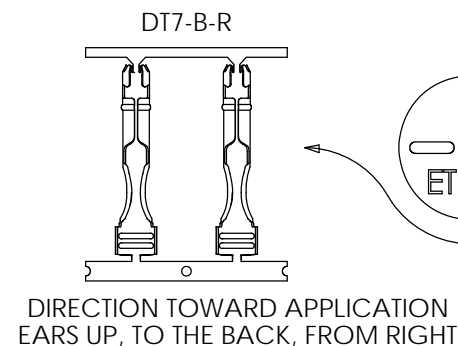
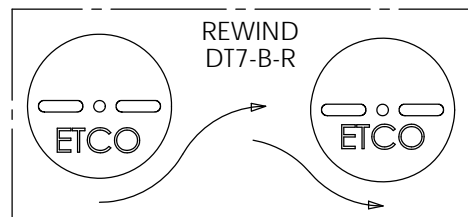
Rev.	Description of Change/ SCN#	Date
2	ECR# 4870 SCJ Redrawn in SW from ACAD Org.Eng.Dwg.Date: 11/24/92	11/30/18



SECTION A-A



DIRECTION EXITING TOOL,
EARS UP, TO THE BACK



UNCONTROLLED COPY

<p>THIRD ANGLE PROJECTION TOLERANCES UNLESS OTHERWISE SPECIFIED INCHES: .XX - ±.030 .XXX - ±.015 ANGLES: ±5°</p>	<p>TOOL NO. 2101</p>	<p>Title: Distributor Terminal</p>			
		<p>DO NOT SCALE DWG.</p>	<p>Drawn By: S.Johnson</p>	<p>Date: 11/30/18</p>	
		<p>ETCO Incorporated Engineered Products 25 Bellows Street Warwick, RI 02888 Phone: (401) 467-2400 Fax: (401) 467-9230 www.ETCO.com</p>	<p>Design Control By: ETCO</p>	<p>Scale: 4X</p>	<p>Size B</p>
		<p>Dwg. No.: DT7-B cust</p>			