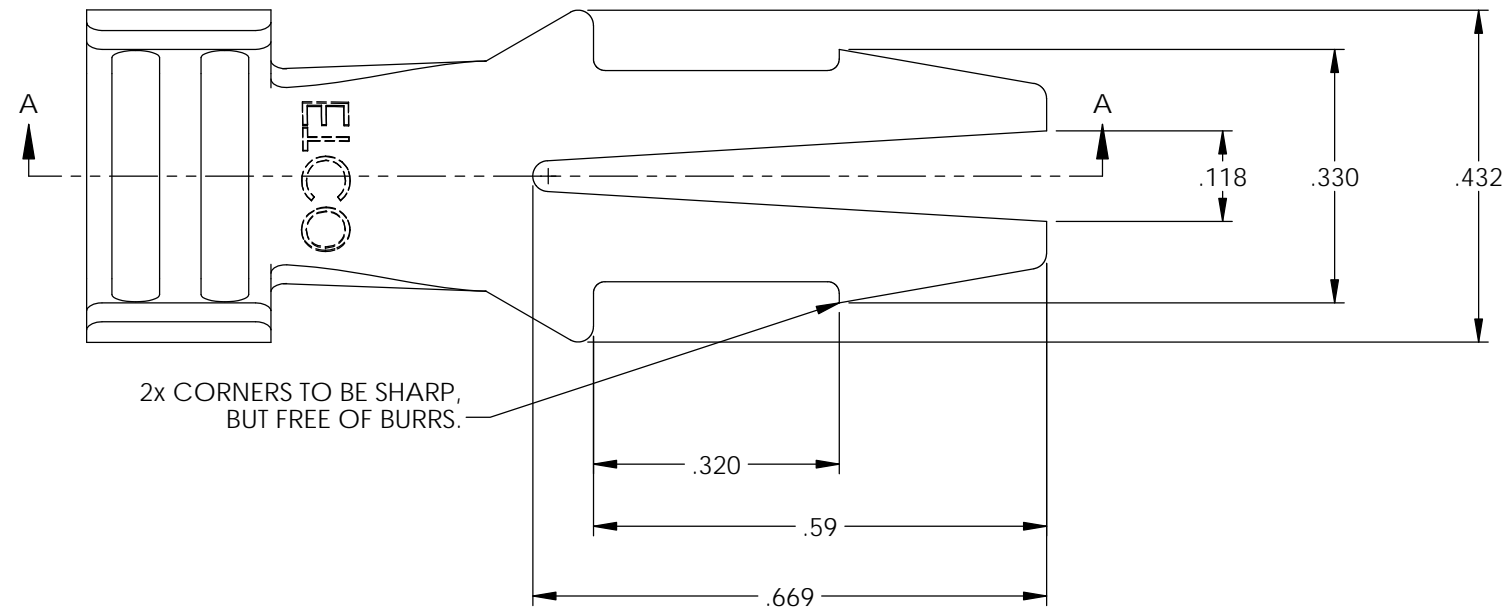
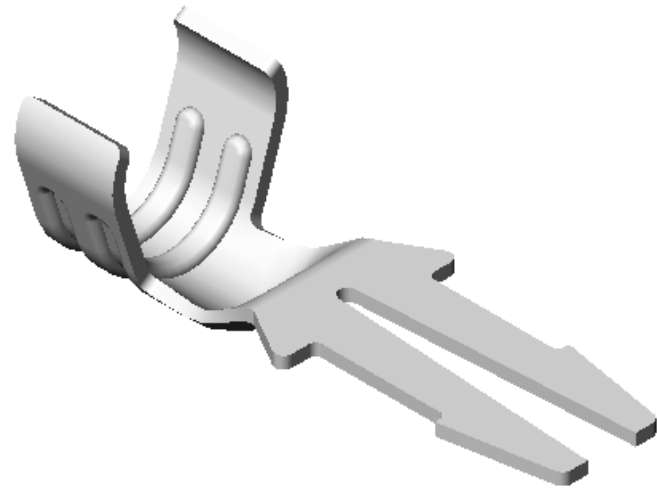


NOTES:

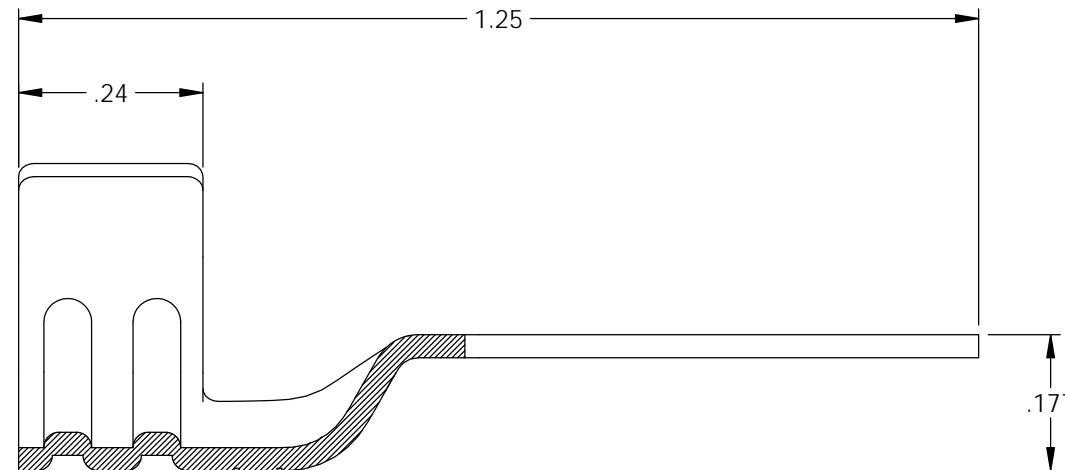
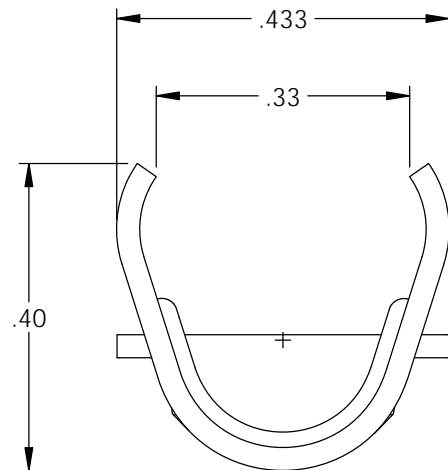
1. MATERIAL: .030 THICK S430 STAINLESS STEEL
BRIGHT ANNEALED
PER ETCO METAL CODE 0-0052.
2. PARTS MAY BE COATED WITH A LIGHT FILM OF
LUBRICATION USED IN THE MANUFACTURING PROCESS.
3. WIRE RANGE: 8mm.
4. PARTS ARE PRODUCED IN LOOSE PIECE FORM.

P/C	DESCRIPTION	MAT'L
15024	DT780-SS-X	NOTE 1

Rev.	Description of Change/ SCN#	Date
1	Redrawn in SW from ACAD Org.Eng.Dwg.Date: 10/11/89	11/19/18



2x CORNERS TO BE SHARP,
BUT FREE OF BURRS.



SECTION A-A

UNCONTROLLED COPY

<p>THIRD ANGLE PROJECTION TOLERANCES UNLESS OTHERWISE SPECIFIED INCHES: .XX - ±.030 .XXX - ±.015 ANGLES: ±5°</p>	<p>TOOL NO.</p> <p>2041</p>	<p>Title:</p> <p>Distributor Connector</p>	
	<p>ETCO</p>	<p>DO NOT SCALE DWG.</p> <p>ETCO Incorporated Engineered Products 25 Bellows Street Warwick, RI 02888 Phone: (401) 467-2400 Fax: (401) 467-9230 www.ETCO.com</p>	<p>Design Control By:</p> <p>ETCO</p>
		<p>Drawn By: S.Johnson</p>	<p>Date: 11/19/18</p>
		<p>Dwg. No.:</p> <p>DT780-X cust</p>	