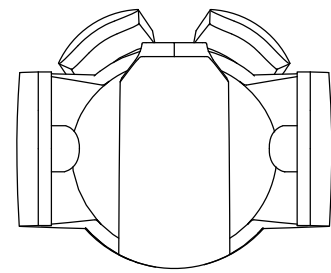
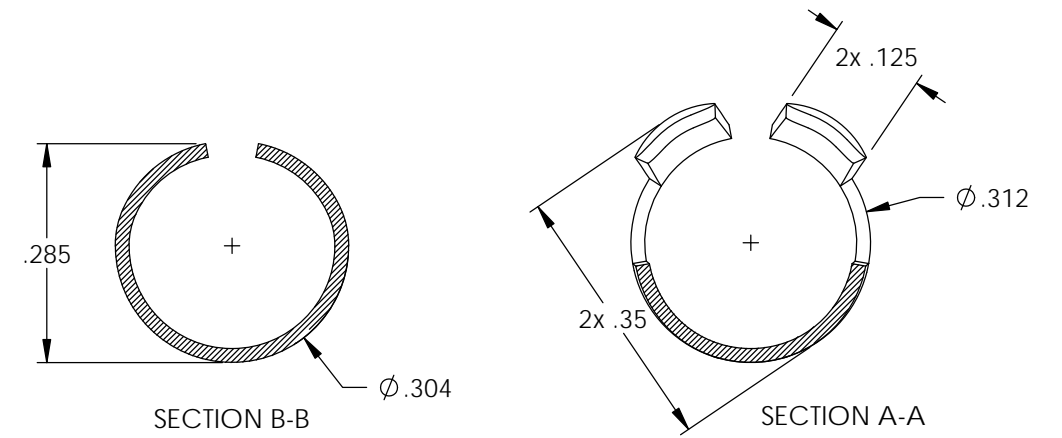
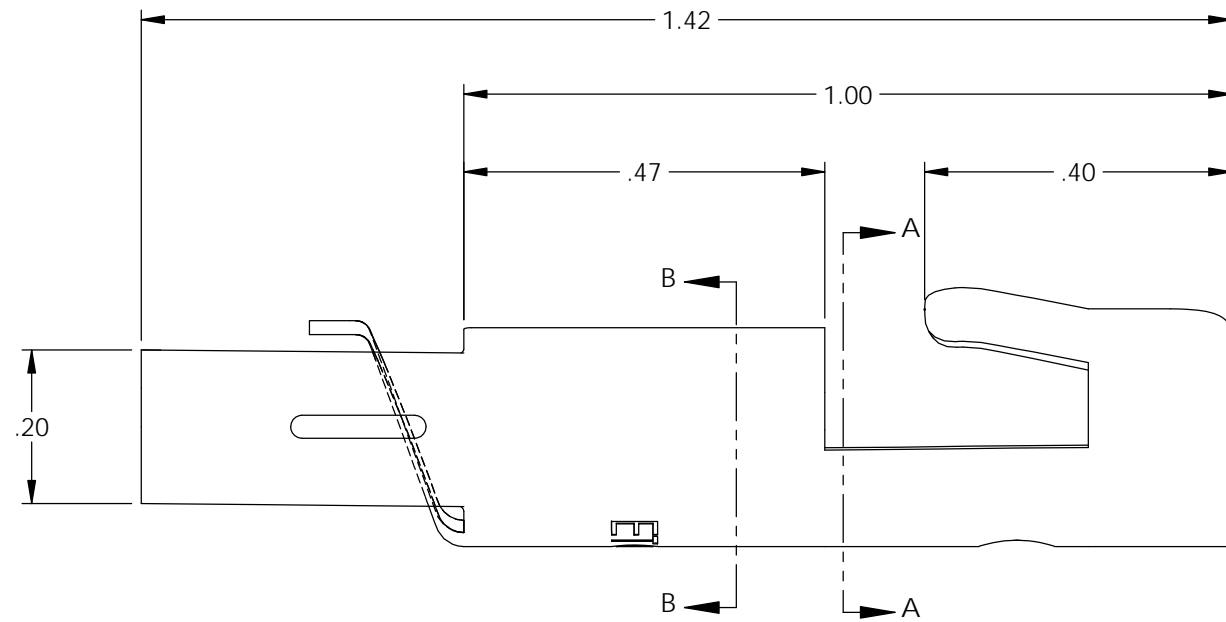
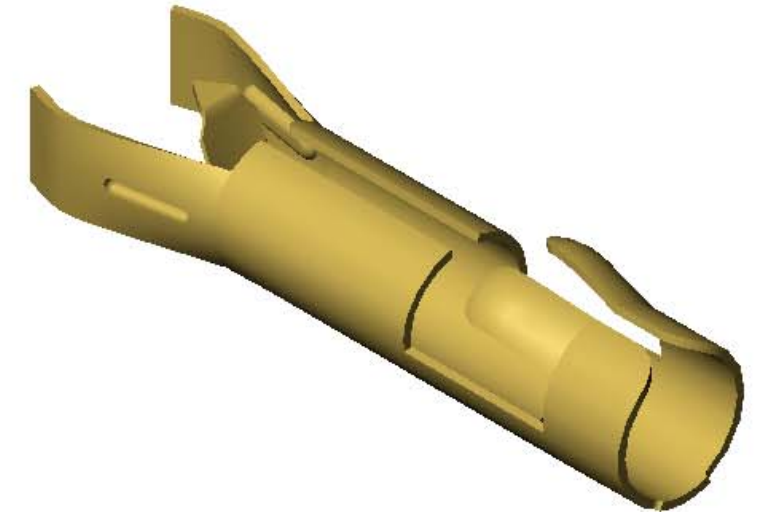
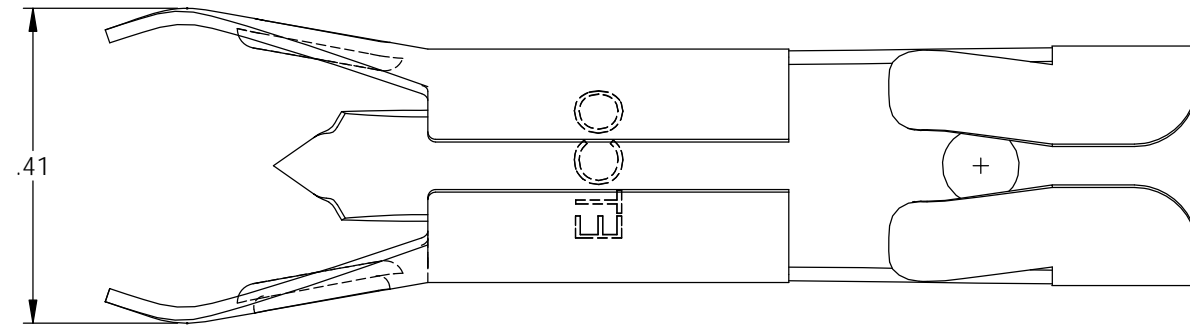


NOTES:

1. MATERIAL: .018 THICK BRASS
#4 TEMPER (FULL HARD)
PER ETCO METAL CODE 0-0012.
2. PARTS MAY BE COATED WITH A LIGHT FILM OF LUBRICATION USED IN THE MANUFACTURING PROCESS.
3. WIRE RANGE: 7mm-8mm CABLE.
4. PARTS ARE PRODUCED IN LOOSE PIECE FORM.

P/C	DESCRIPTION	MAT'L
09776	DT90-HB-X	NOTE 1

Rev.	Description of Change/ SCN#	Date
1	ECR# 5606 SCJ Redrawn in SW from ACAD Org.Eng.Dwg.Date: 5/31/89	6/03/19



UNCONTROLLED COPY

<p>THIRD ANGLE PROJECTION TOLERANCES UNLESS OTHERWISE SPECIFIED INCHES: .XX - $\pm .030$.XXX - $\pm .015$ ANGLES: $\pm 5^\circ$</p>	<p>TOOL NO. 2018</p>	<p>Title: Distributor Terminal</p>		
		<p>DO NOT SCALE DWG.</p>	<p>Drawn By: S.Johnson</p>	<p>Date: 6/03/19</p>
<p>ETCO Incorporated Engineered Products 25 Bellows Street Warwick, RI 02888 Phone: (401) 467-2400 Fax: (401) 467-9230 www.ETCO.com</p>		<p>Design Control By: ETCO</p>	<p>Scale: 4X</p>	<p>Size B</p>
		<p>Dwg. No.: DT90-X cust</p>		