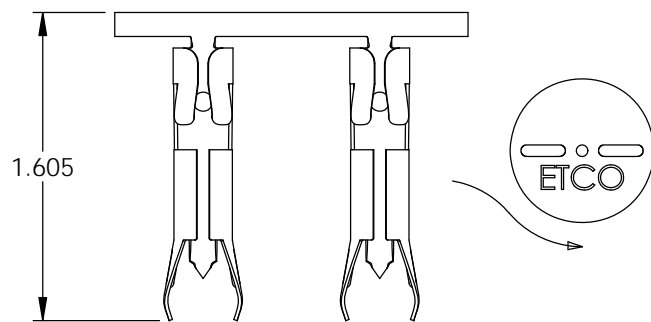
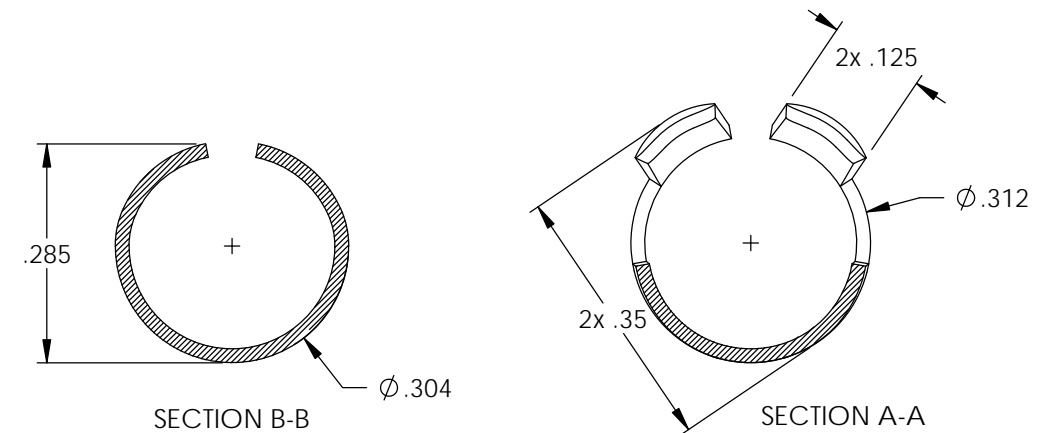
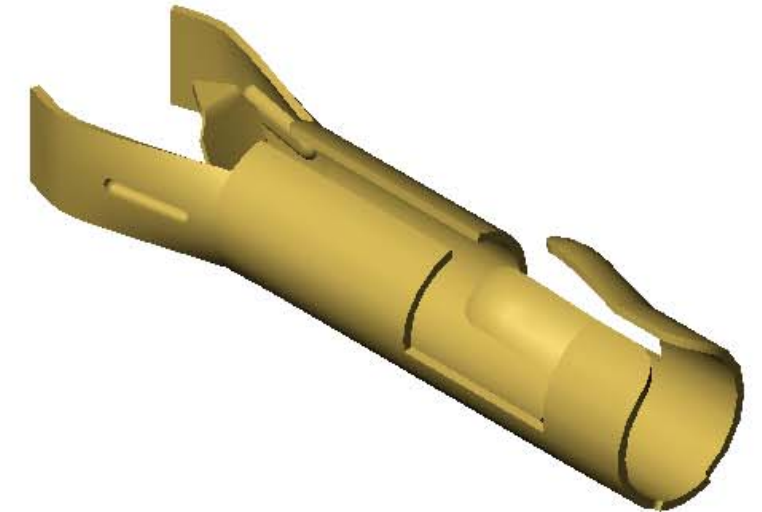
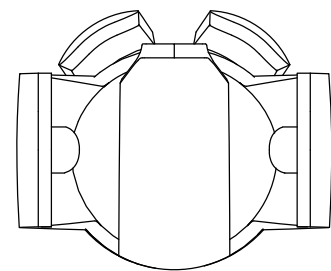
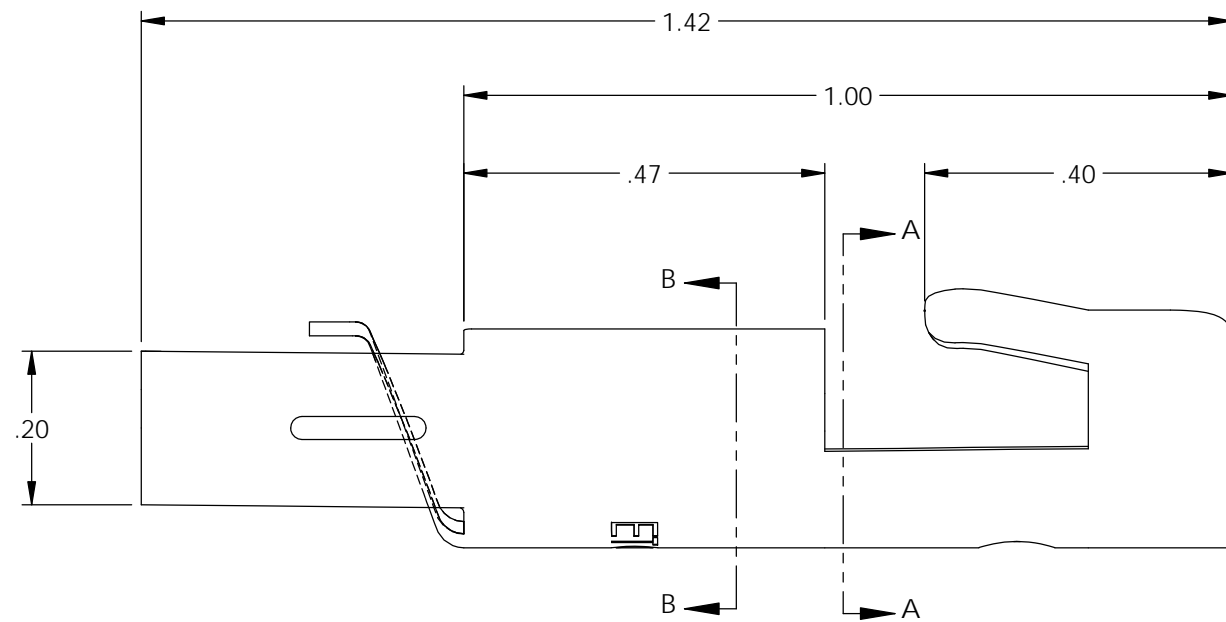
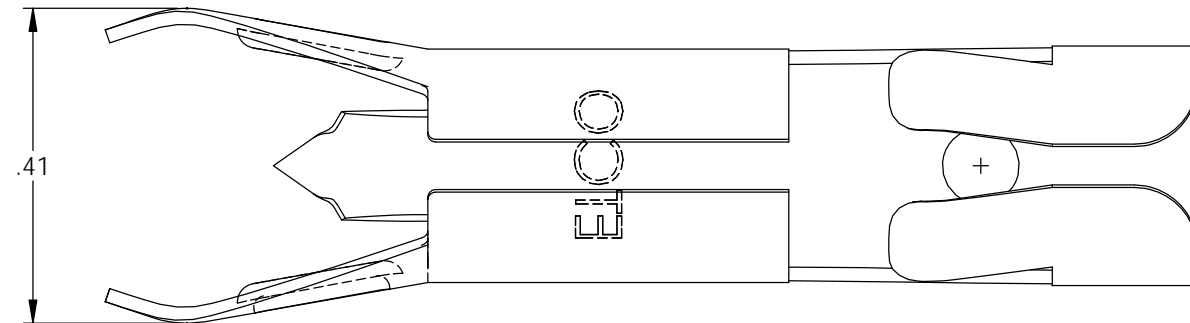


NOTES:

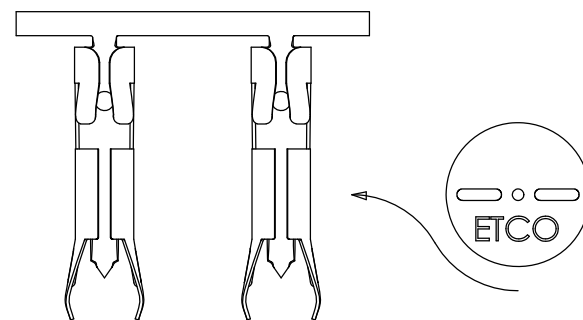
1. MATERIAL: .018 THICK BRASS
#4 TEMPER (FULL HARD)
PER ETCO METAL CODE 0-0012.
2. PARTS MAY BE COATED WITH A LIGHT FILM OF LUBRICATION USED IN THE MANUFACTURING PROCESS.
3. WIRE RANGE: 7mm-8mm CABLE.

| P/C | DESCRIPTION | MAT'L |
|-------|-------------|--------|
| 09775 | DT90-HB | NOTE 1 |

| Rev. | Description of Change/ SCN# | Date |
|------|---|---------|
| 1 | ECR# 5606 SCJ Redrawn in SW from ACAD Org.Eng.Dwg.Date: 5/31/89 | 6/07/19 |



DIRECTION EXITING TOOL,
FORM UP, CARRIER TO THE BACK



DIRECTION TOWARD APPLICATOR,
FORM UP, CARRIER TO THE BACK, FROM RIGHT

THIS PRINT IS THE PROPERTY OF ETCO INCORPORATED. NO PART OF THIS DESIGN MAY BE USED IN ANY WAY WITHOUT WRITTEN CONSENT FROM ETCO INCORPORATED.

UNCONTROLLED COPY

| | | | | |
|---|---------------------------------|---|-----------------------------------|-----------------------------|
| <p>THIRD ANGLE PROJECTION TOLERANCES UNLESS OTHERWISE SPECIFIED INCHES: .XX - ±.030 .XXX - ±.015 ANGLES: ±5°</p> | <p>TOOL NO. 2018</p> | <p>Title: Distributor Terminal</p> | | |
| | | <p>DO NOT SCALE DWG.</p> | <p>Drawn By: S.Johnson</p> | <p>Date: 6/07/19</p> |
| <p>ETCO Incorporated Engineered Products 25 Bellows Street Warwick, RI 02888 Phone: (401) 467-2400 Fax: (401) 467-9230 www.ETCO.com</p> | | <p>Design Control By: ETCO</p> | <p>Scale: 4X</p> | <p>Size B</p> |
| | | <p>Dwg. No.: DT90 cust</p> | | |