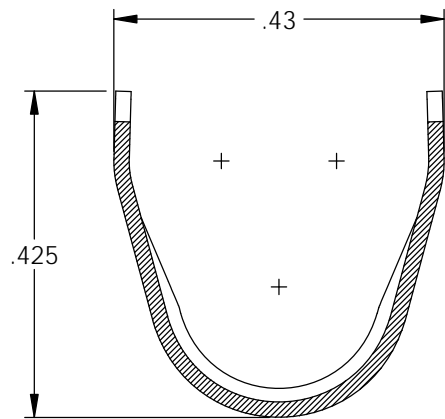
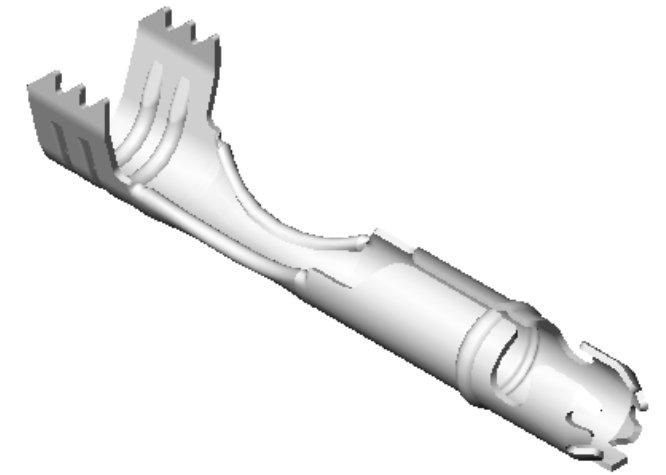
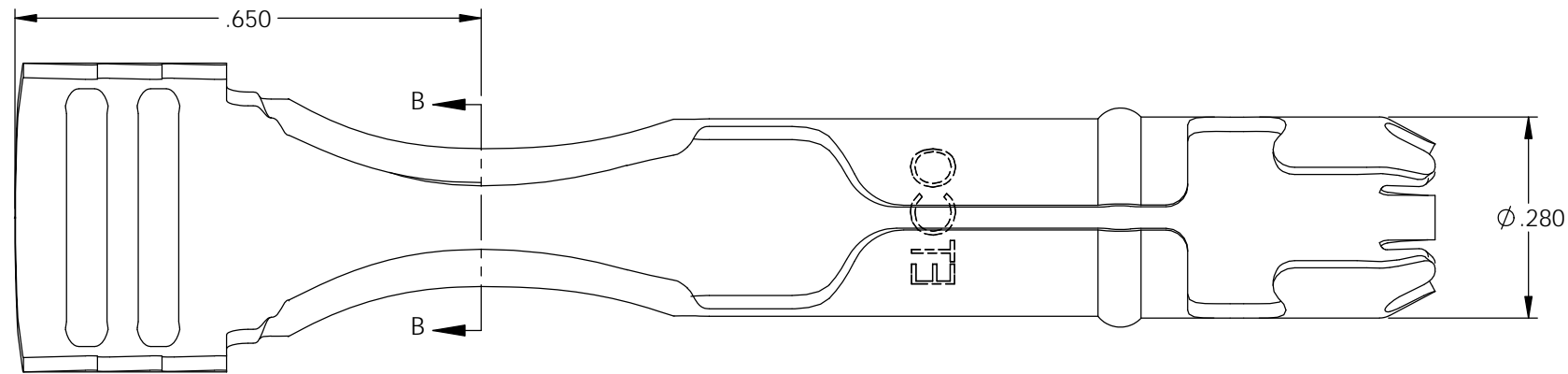


NOTES:

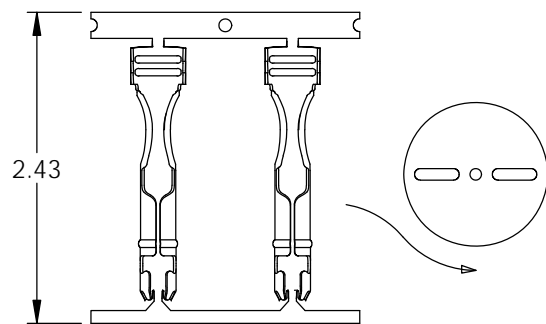
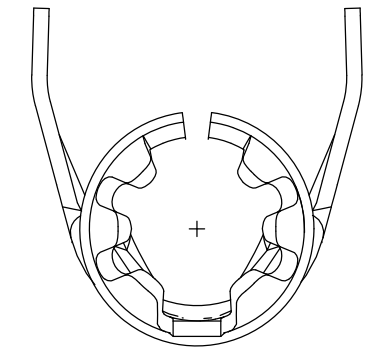
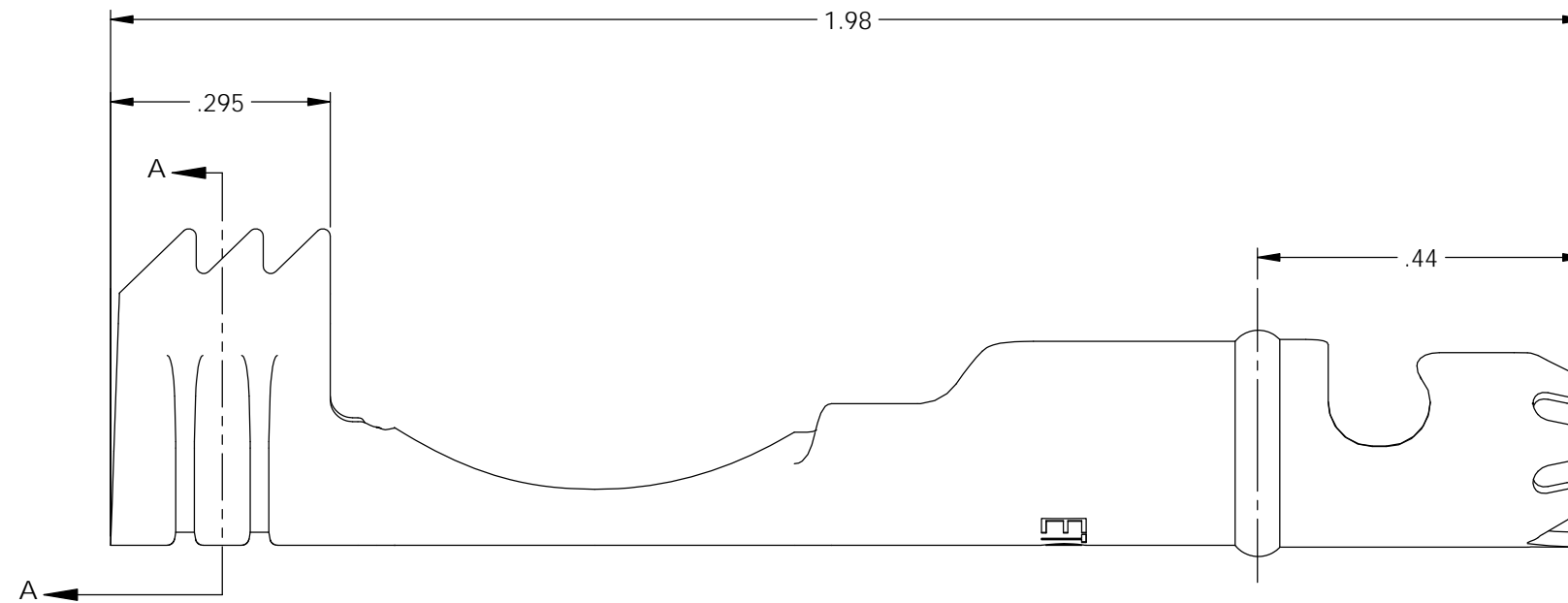
- MATERIAL: .020 THICK BRASS
#3 TEMPER (3/4 HARD)
PER ETCO METAL CODE 0-0006.
- MATERIAL: .020 THICK S430 STAINLESS STEEL
BRIGHT ANNEALED
PER ETCO METAL CODE 0-0053.
- MATERIAL: .020 THICK, ELECTRO-GALVANIZED ZINC
PLATED STEEL, #3 TEMPER (1/4 HARD)
PER ETCO METAL CODE 0-0103.
- PARTS MAY BE COATED WITH A LIGHT FILM OF
LUBRICATION USED IN THE MANUFACTURING
PROCESS.
- WIRE RANGE: 7-8mm.

P/C	DESCRIPTION	MAT'L
15291	DT952-SS	NOTE 2

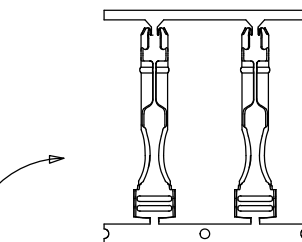
Rev.	Description of Change/ SCN#	Date
1	Redrawn in SW from ACAD Org.Eng.Dwg.Date: 10/22/11	11/30/18



SECTION A-A



DIRECTION EXITING TOOL,
EARS UP, TO THE BACK



DIRECTION TOWARD APPLICATION
EARS UP, TO THE BACK, FROM LEFT

UNCONTROLLED COPY

<p>THIRD ANGLE PROJECTION TOLERANCES UNLESS OTHERWISE SPECIFIED INCHES: .XX - ±.030 .XXX - ±.015 ANGLES: ±5°</p>	<p>TOOL NO. 2101</p>	<p>Title: Distributor Terminal</p>		
		<p>DO NOT SCALE DWG.</p>	<p>Drawn By: S.Johnson</p>	<p>Date: 11/30/18</p>
<p>ETCO Incorporated Engineered Products 25 Bellows Street Warwick, RI 02888 Phone: (401) 467-2400 Fax: (401) 467-9230 www.ETCO.com</p>		<p>Design Control By: ETCO</p>	<p>Scale: 4X</p>	<p>Size B</p>
		<p>Dwg. No.: DT952 cust</p>		