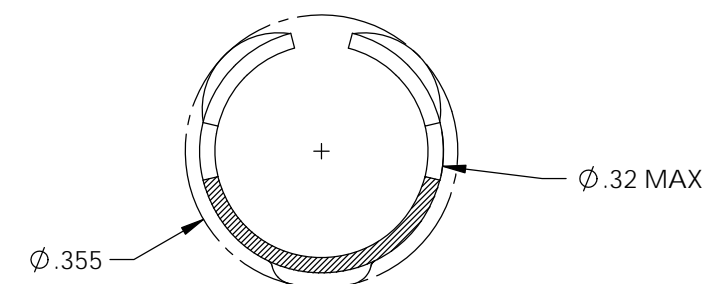
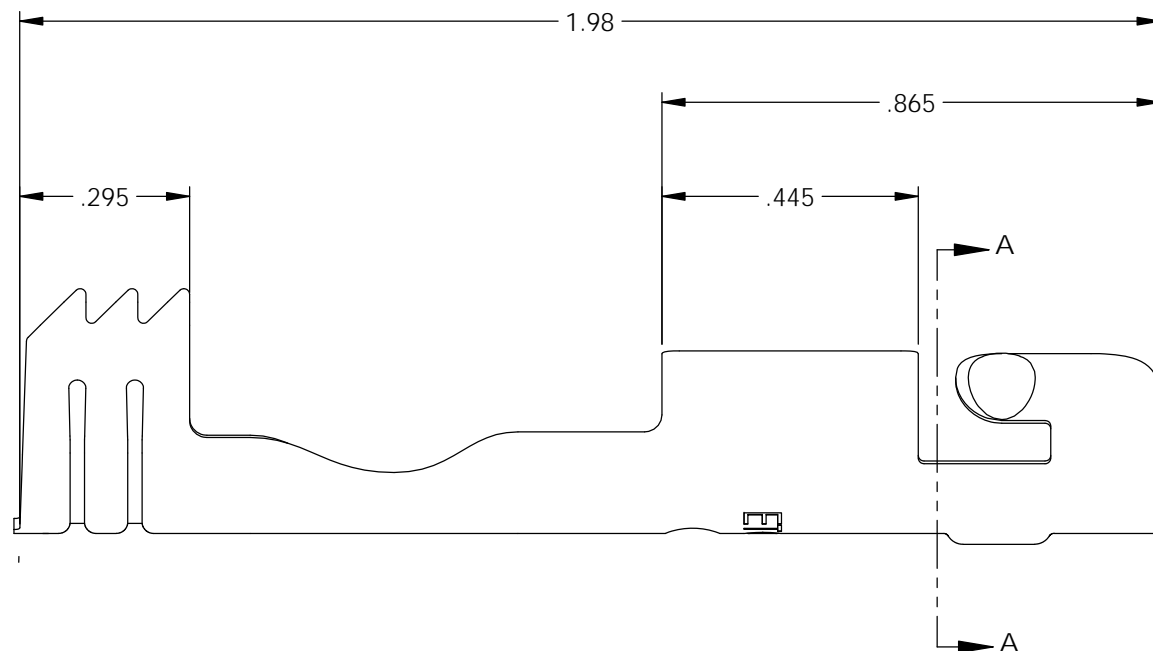
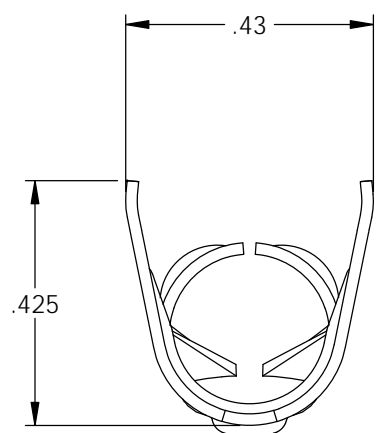
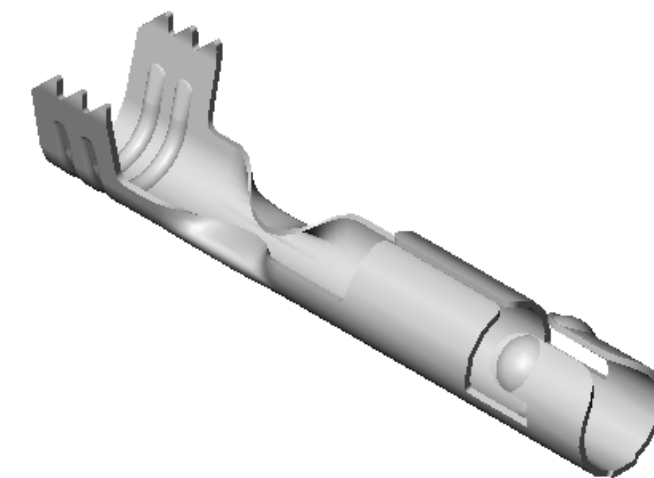
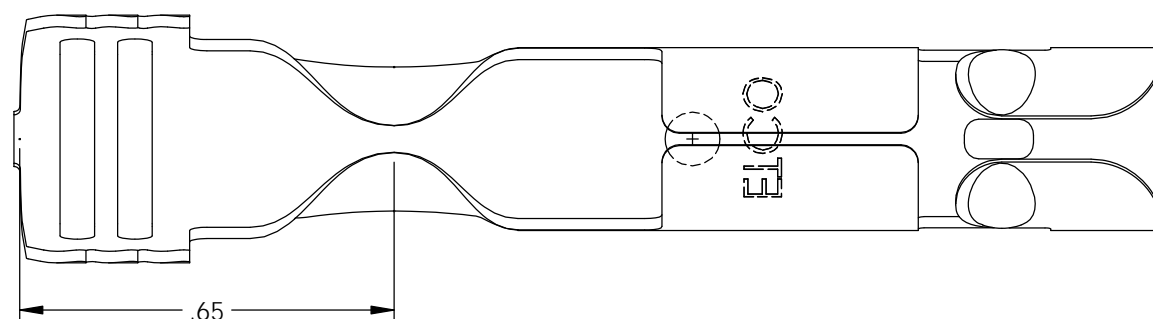


NOTES:

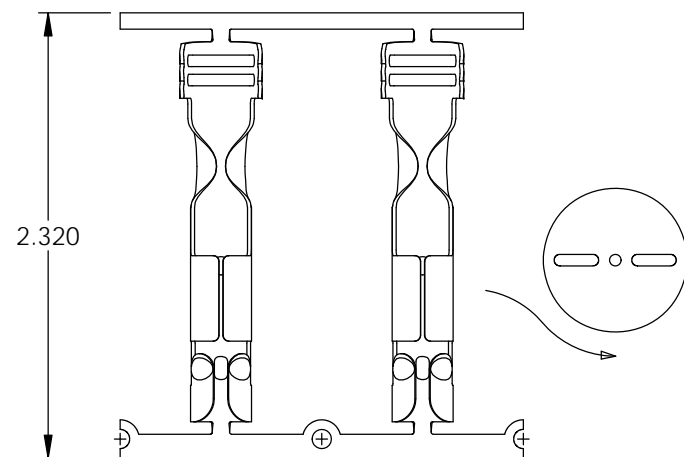
1. MATERIAL: .020 THICK BRASS, #3 TEMPER (3/4 HARD) PER ETCO METAL CODE 0-0016.
2. MATERIAL: .020 THICK S430 STAINLESS STEEL, ANNEALED TO TEMPER, PER ETCO METAL CODE 0-0069.
3. PARTS MAY BE COATED WITH A LIGHT FILM OF LUBRICATION USED IN THE MANUFACTURING PROCESS.
4. WIRE RANGE: 7-8mm.
5. FOR MAXIMUM PERFORMANCE AND RELIABILITY, ALWAYS USE ETCO ENGINEERED IGNITION TERMINALS WITH ETCO AUTOMOTIVE INSULATORS.

P/C	DESCRIPTION	MAT'L
15292	DT953-SS	NOTE 2

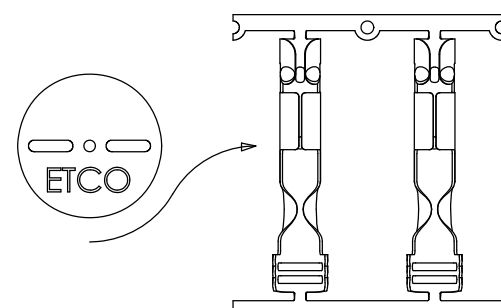
Rev.	Description of Change/ SCN#	Date
1	Redrawn in SW from ACAD Org.Eng.Dwg.Date: 8/24/04	1/25/19



SECTION A-A  
SCALE 4 : 1



DIRECTION EXITING TOOL,  
EARS UP, TO THE BACK



DIRECTION TOWARD APPLICATOR  
EARS UP, TO THE FRONT, FROM LEFT

THIS PRINT IS THE PROPERTY OF ETCO INCORPORATED. NO PART OF THIS DESIGN MAY BE USED IN ANY WAY WITHOUT WRITTEN CONSENT FROM ETCO INCORPORATED.

# UNCONTROLLED COPY

<p>THIRD ANGLE PROJECTION TOLERANCES UNLESS OTHERWISE SPECIFIED INCHES: .XX - ±.030 .XXX - ±.015 ANGLES: ±5°</p>	<p>TOOL NO.</p> <p><b>2056</b></p>	<p>Title:</p> <p><b>Distributor Terminal</b></p>	
		<p>DO NOT SCALE DWG.</p> <p>Design Controlled By: <b>ETCO</b></p> <p>Dwg. No.: <b>DT953 cust</b></p>	<p>Drawn By: <b>S.Johnson</b></p> <p>Scale: <b>3X</b></p> <p>Date: <b>1/25/19</b></p> <p>Size: <b>B</b></p>

ETCO Incorporated  
Engineered Products  
25 Bellows Street  
Warwick, RI 02888  
Phone: (401) 467-2400  
Fax: (401) 467-9230  
www.ETCO.com