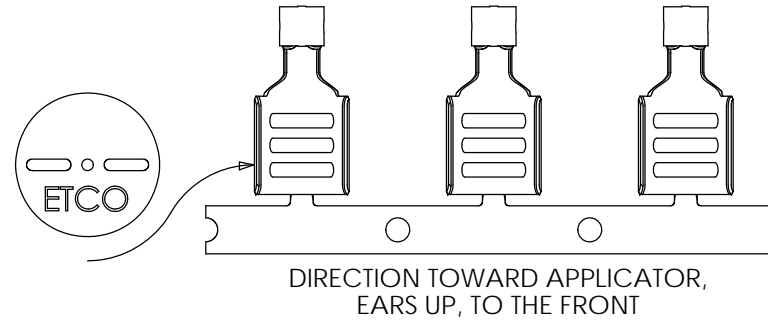
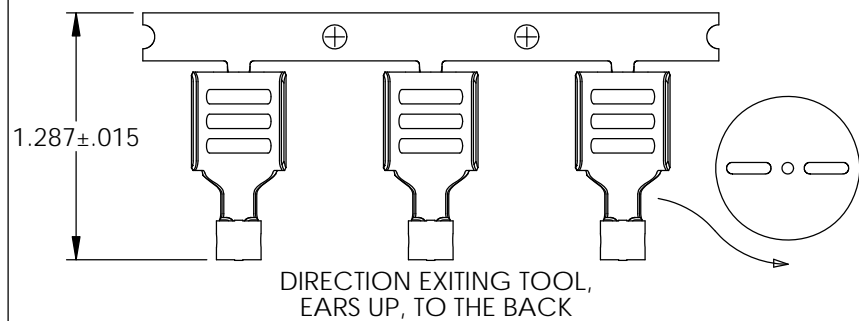
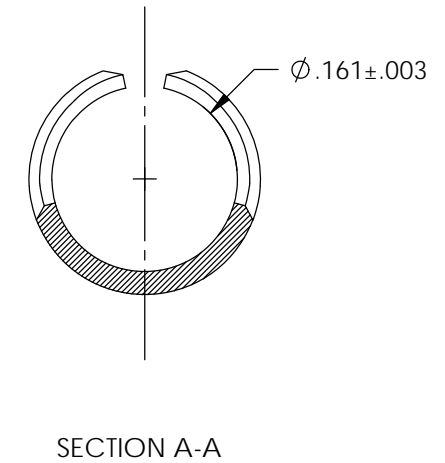
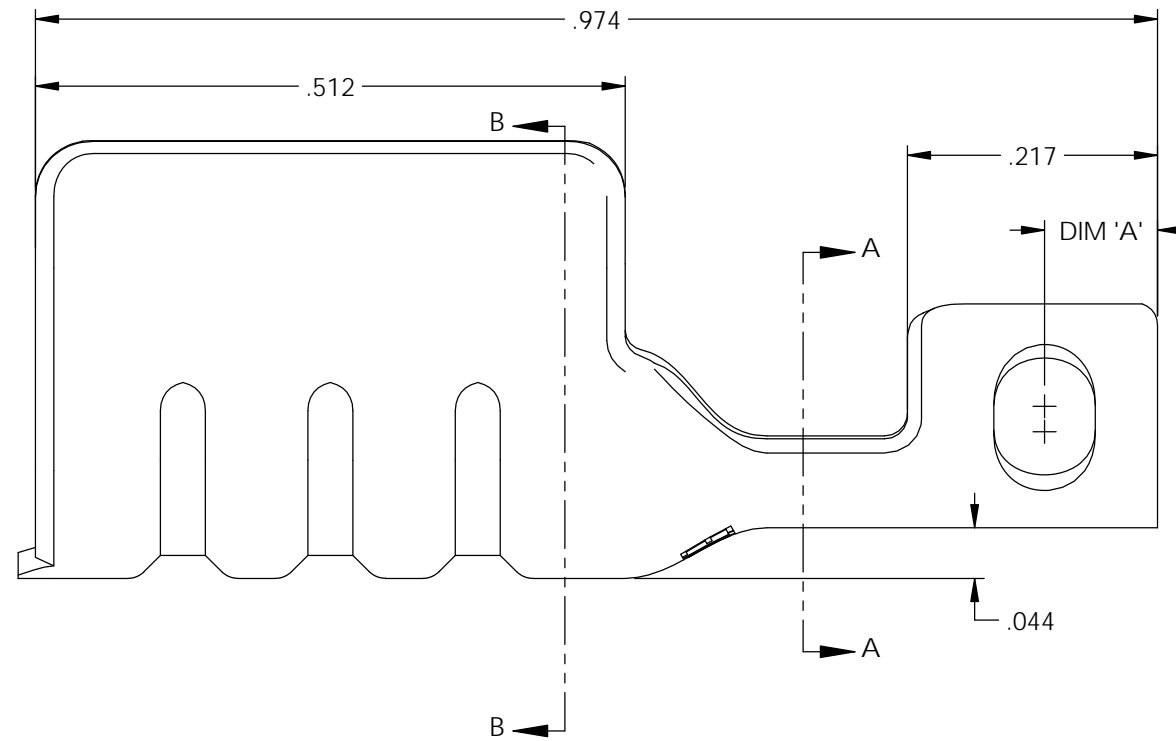
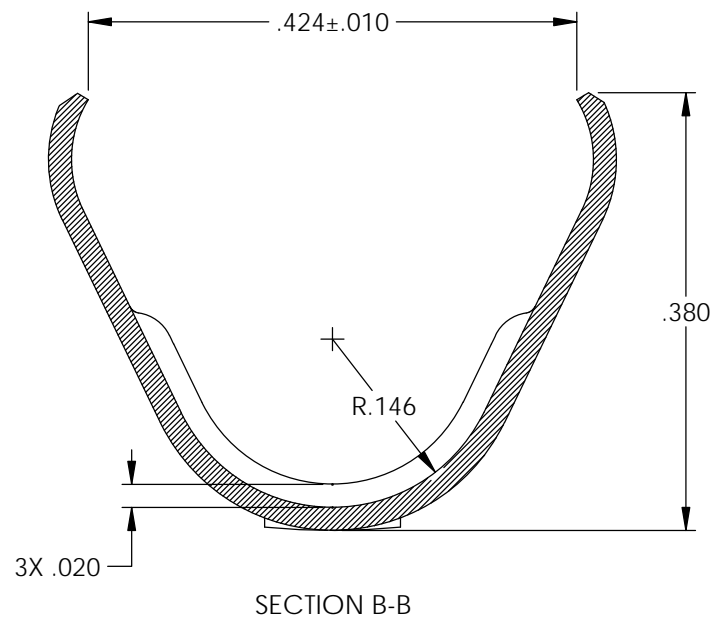
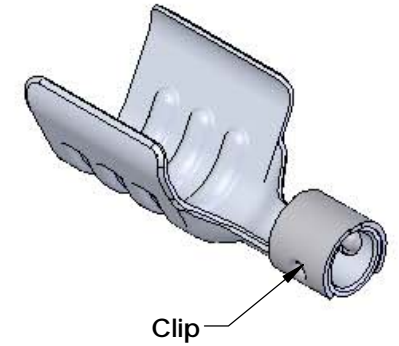
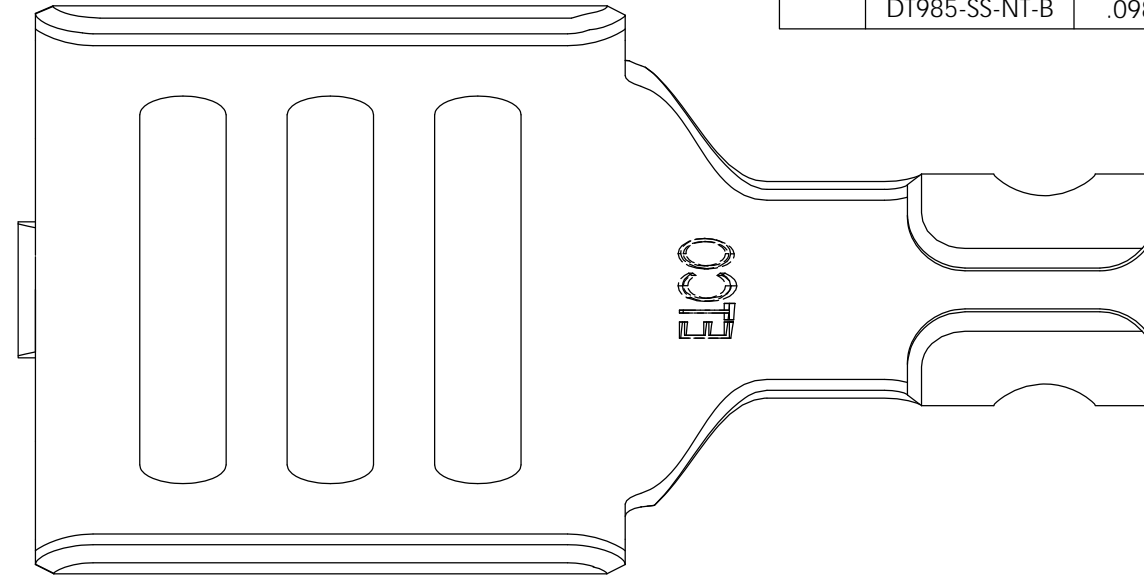


NOTES:

1. MATERIAL: .020 THICK 430 STAINLESS STEEL, BRIGHT ANNEALED, PER ETCO METAL CODE 0-0114.
2. PARTS MAY BE COATED WITH A LIGHT FILM OF LUBRICATION USED IN THE MANUFACTURING PROCESS.
3. WIRE RANGE: 8.5 mm.

P/C	DESCRIPTION	DIM 'A'	MAT'L	CLIP
15189	DT985-SS-NT	.098	NOTE 1	SCA209
	DT985-SS-NT-HC	.108	NOTE 1	SCA209
	DT985-SS-NT-B	.098	NOTE 1	SCA209-B

Rev.	Description of Change/ SCN#	Date
1	Redrawn in SolidWorks SCJ Org.Eng.Dwg.Date 10/28/96	4/05/18
1	Added Dim 'A' to chart. SCJ	5/04/18



UNCONTROLLED COPY

<p>THIRD ANGLE PROJECTION TOLERANCES UNLESS OTHERWISE SPECIFIED INCHES: .XX - ±.012 .XXX - ±.006 ANGLES: ±2°</p>	<p>TOOL NO. 2239 2131</p>	<p>Title: Distributor Terminal</p>	
		<p>DO NOT SCALE DWG.</p>	<p>Drawn By: S.Johnson Date: 4/05/18</p>
<p>ETCO Incorporated Engineered Products 25 Bellows Street Warwick, RI 02888 Phone: (401) 467-2400 Fax: (401) 467-9230 www.ETCO.com</p>		<p>Design Control By: ETCO</p>	<p>Scale: 6X Size B</p>
<p>Dwg. No.: DT985-NT cust</p>			