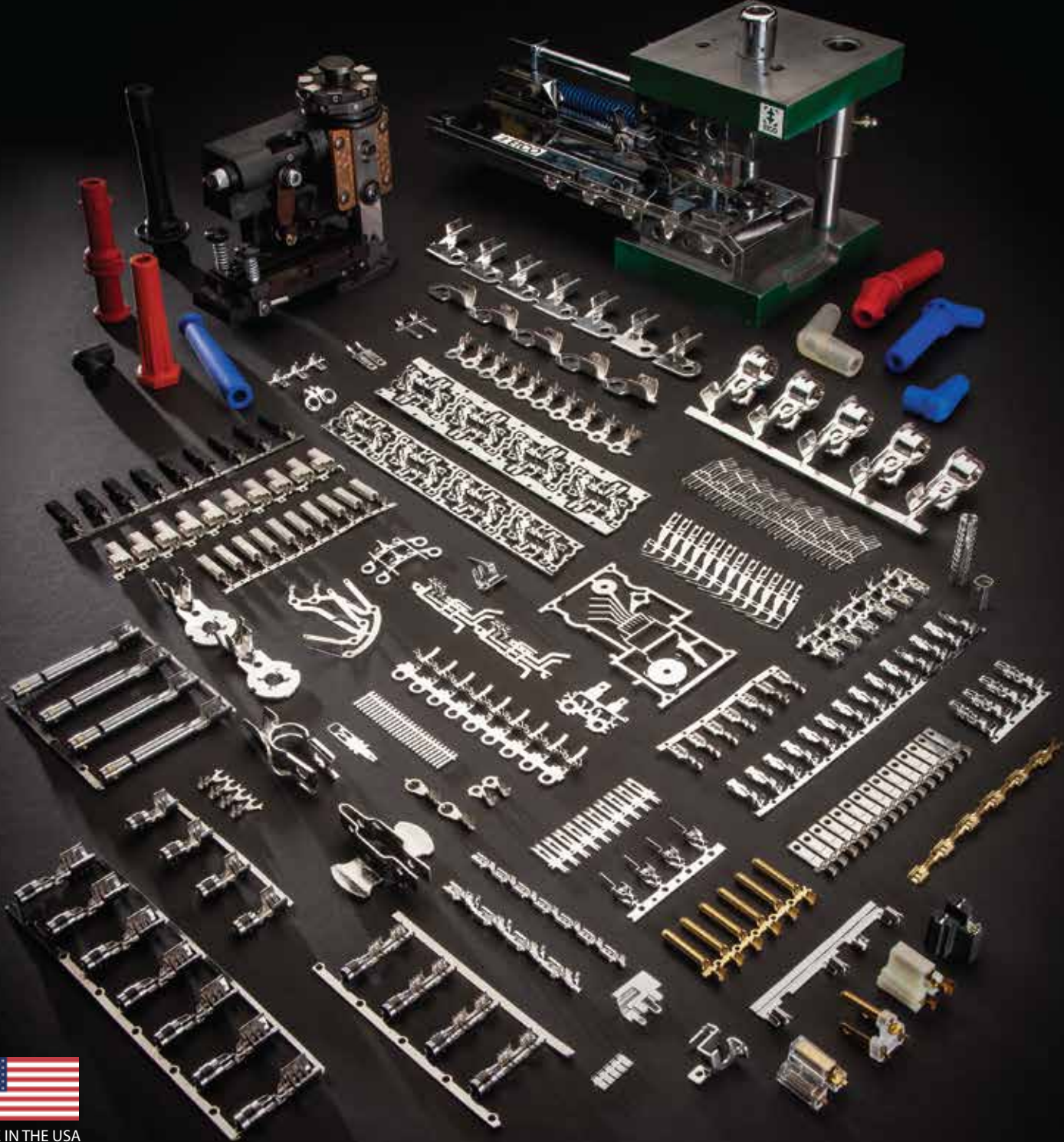


# Our Product Line Is Our Spokesperson



To assure that our locking rings actually lock, we put some real teeth into them.



**ETCO Incorporated**  
3004 62nd Avenue East  
Bradenton, FL 34203

800.689-ETCO (3826)  
INT'L +1 941.756.8426  
INFO@ETCO.COM  
ETCO.COM



*Old Values, New Ideas*  
Since 1947

# ETCO's locking ring teeth are twice the size of competitors



When locking ring terminals don't really lock it squanders time on the production floor, especially if the screw needs to be removed and re-fastened, potentially damaging the harness. Then there is the possibility of arcing or electrical shorts with adjacent terminals at some point down the road. A secure connection is absolutely critical to production efficiency and the integrity of the circuit.

The teeth on ETCO's locking rings extend .023" inches from the terminal surface. The teeth are a full 92% of the thickness of the ring itself and the 40-degree angle of the teeth provides sharp steel wedges that give the terminal its' superior bite. These features allow penetration into metal surfaces, painted or not.

If you look at the competition's terminals they are typically made of brass with simple tang folds extending just .012"

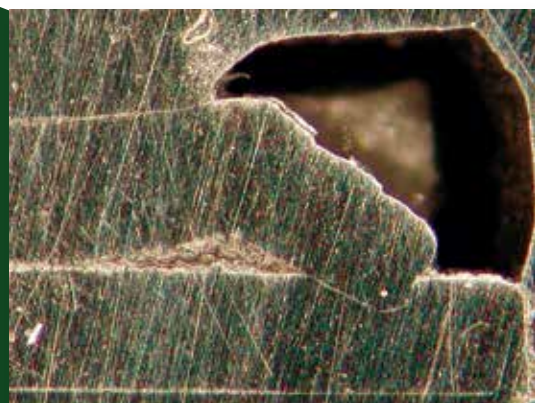
It is easy to understand why ETCO's locking rings are superior and much more likely to provide a more secure connection and improved output on the production floor.

When you think about it, the math is pretty compelling.

If this all adds up for you call ETCO at 1-800-689-3826. We can help keep your production facility humming.



ETCO's locking rings after testing



ETCO's steel teeth are .023" and hold their shape

Competitor's after testing



The competitor's teeth are .012" and compress under pressure



Above is an example of the competitor's teeth not biting into the unit. This unwanted rotation can cause arcing or an electrical short with adjacent terminals.

