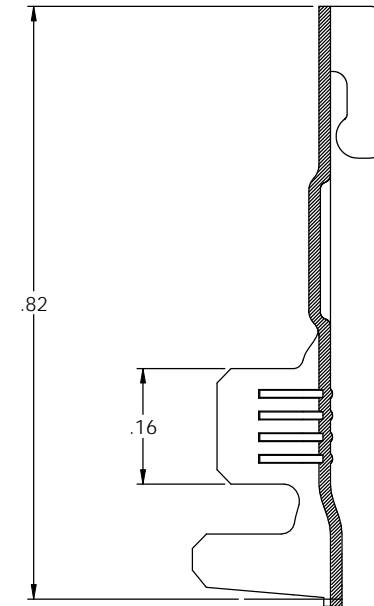
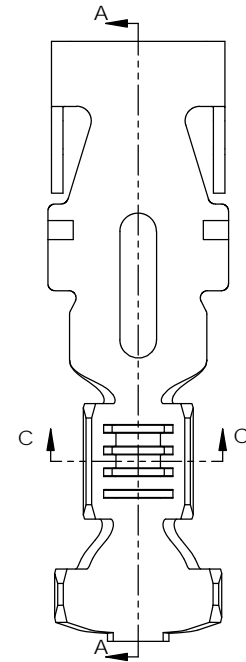
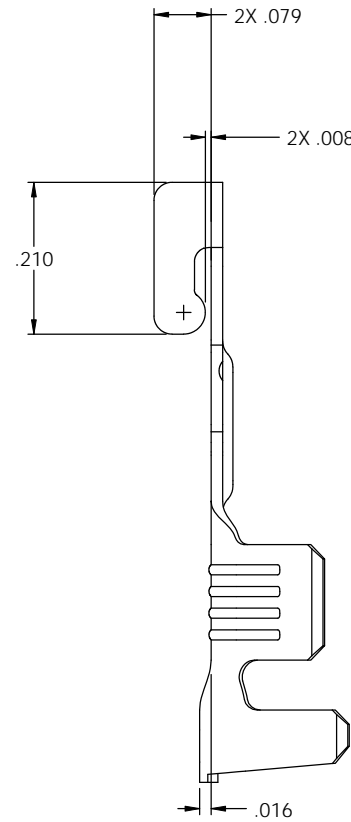
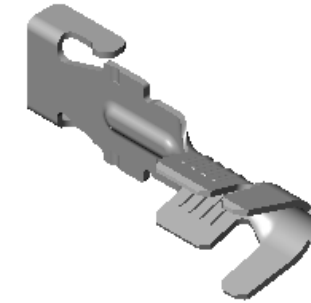


NOTES:

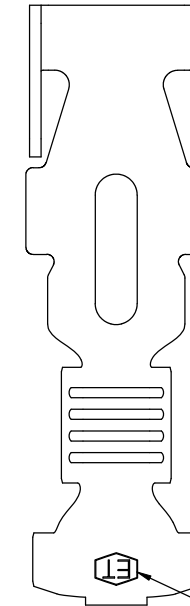
- MATERIAL: .016 THICK BRASS
#4 TEMPER (FULL HARD)
PER ETCO METAL CODE 05042.
- MATERIAL: .016 THICK PRETINNED BRASS
#4 TEMPER (FULL HARD)
PER ETCO METAL CODE 01261.
- MATERIAL: .016 THICK COPPER ALLOY C18080
#8 TEMPER (FULL HARD)
PER ETCO METAL CODE 00356.
- INSERTION/WITHDRAWAL FORCES ARE INDICATED ON THE QUALITY INSPECTION PLAN.
- PARTS MAY BE COATED WITH A LIGHT FILM OF LUBRICATION USED IN THE MANUFACTURING PROCESS.
- ALL CORNERS SHOWN SHARP MAY HAVE A .010 RADIUS.
- ALL UNSPECIFIED RADII TO BE .010.
- MATES WITH IDENTICAL FLATSNAP.

P/Cs	DESCRIPTION	"WH"	"WW"	"IH"	"IW"	MAT'L	WIRE RANGE	INSUL RANGE	UL
09524	F260-HB	.15	.14	.20	.23	NOTE 1	14-18 AWG	Ø .140 MAX	
09525	F260-THB	.15	.14	.20	.23	NOTE 2	14-18 AWG	Ø .140 MAX	
09526	F260-HC	.15	.14	.20	.23	NOTE 3	14-18 AWG	Ø .140 MAX	X
09527	F265-HB	.11	.11	.17	.20	NOTE 1	18-22 AWG	Ø .115 MAX	
09528	F265-THB	.11	.11	.17	.20	NOTE 2	18-22 AWG	Ø .115 MAX	
09529	F265-HC	.11	.11	.17	.20	NOTE 3	18-22 AWG	Ø .115 MAX	X

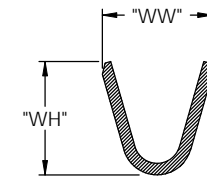
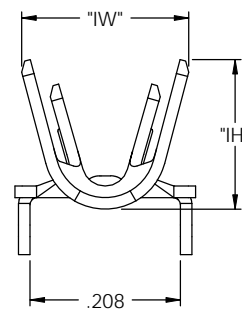
Rev.	Description of Change/ SCN#	Date
-	INITIAL CUST. DWG RELEASE	JMR 12/26/07
1	SCN-140551	JMR 2/05/10



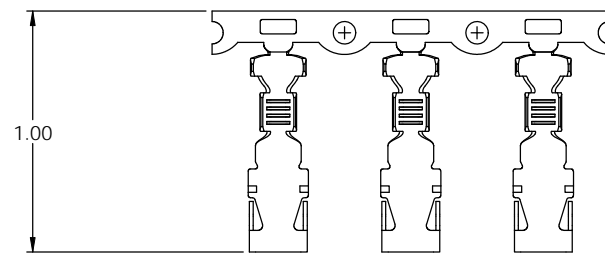
SECTION A-A
SCALE 6 : 1



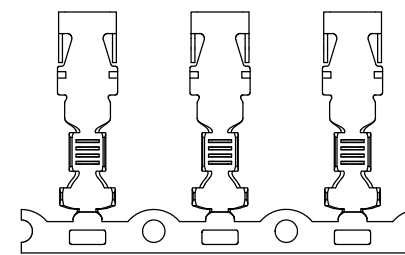
PART TO BE DIE STAMPED
APPROXIMATELY AS SHOWN



SECTION C-C
SCALE 6 : 1



DIRECITON EXITING TOOL
EARS UP, TO THE BACK



DIRECTION TOWARDS APPLICATOR
EARS UP, TO THE FRONT

UNCONTROLLED COPY

<p>THIRD ANGLE PROJECTION</p>	<p>TOOL NO. 0944</p>	<p>Title: FLATSNAP TERMINAL - STANDARD</p>
	<p>DO NOT SCALE DWG.</p>	<p>Drawn By: J. RAMALHO</p>
<p>TOLERANCES UNLESS OTHERWISE SPECIFIED</p> <p>INCHES: XX - ±.030 XXX - ±.015</p> <p>ANGLES: ±5°</p>		<p>ETCO Incorporated Engineered Products 25 Bellows Street Warwick, RI 02888 Phone: (401) 467-2400 Fax: (401) 467-9230 www.ETCO.com</p>
<p>Chk'd/App'd By:</p>		<p>Scale: 4X</p>
<p>Dwg. No.:</p>		<p>Size: C</p>
<p>F260 & F265 cust.</p>		