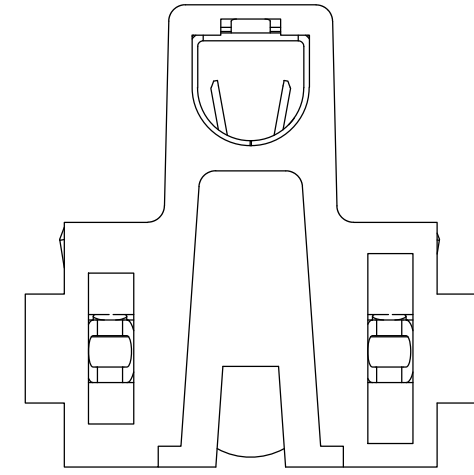
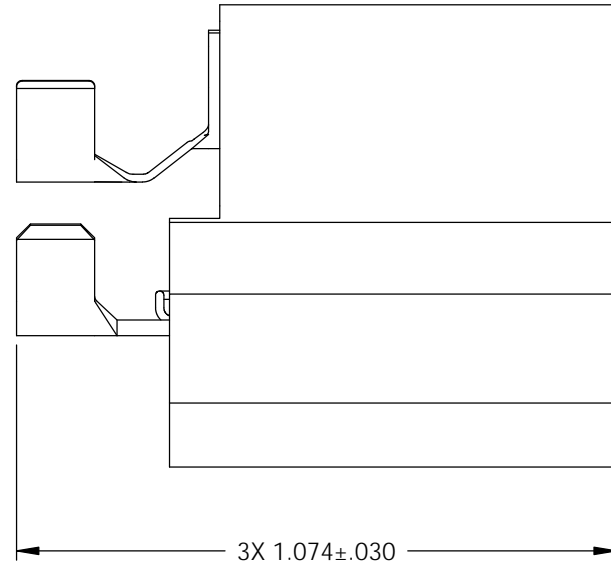
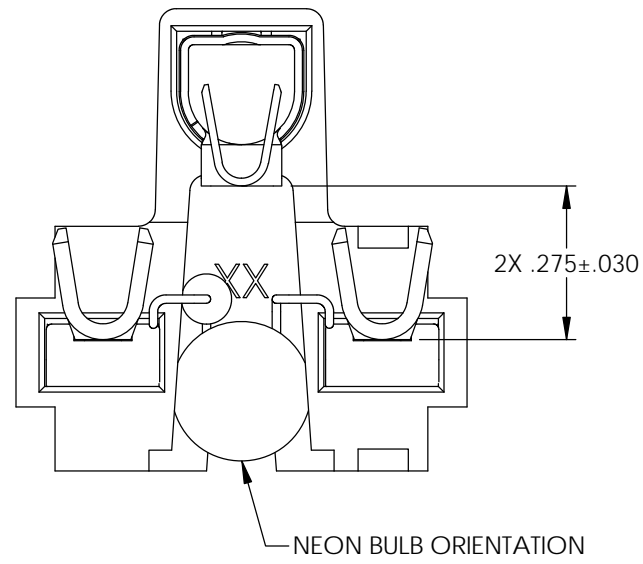
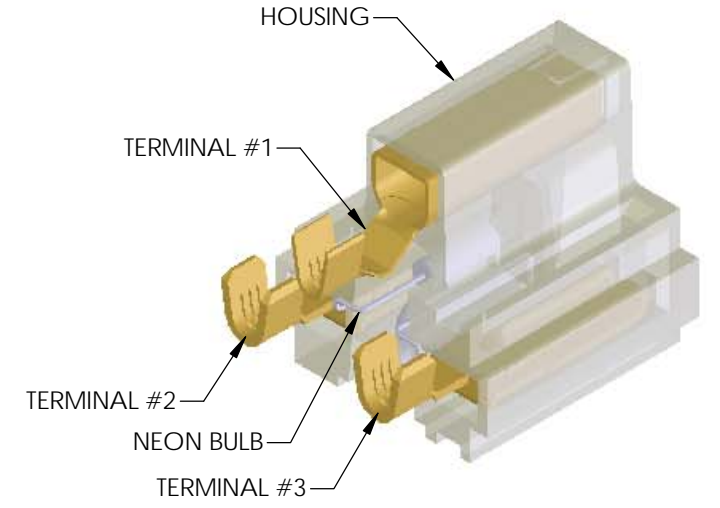
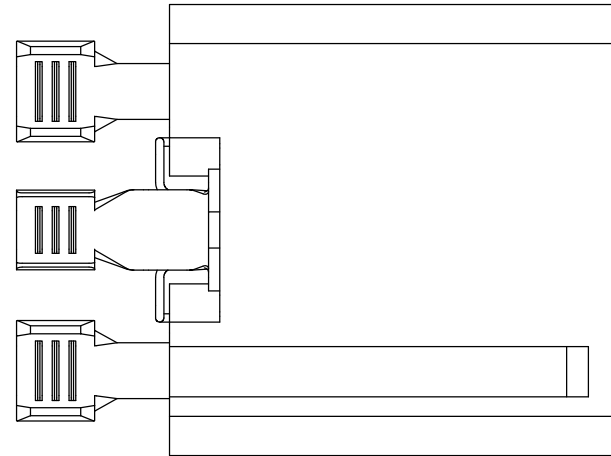


ASSEMBLY ITEM	P/C	DESCRIPTION	MAT'L	PLATING	WIRE RANGE ⁽⁴⁾
TERMINAL #1		RE187N-10-HB-FAE ⁽³⁾ ⁽⁵⁾	BRASS	NONE	12-14 AWG
TERMINAL #2		CF156F-4-HB-FAE ⁽⁵⁾	BRASS	NONE	12-14 AWG
TERMINAL #3		CF156F-4-HB-FAE ⁽⁵⁾	BRASS	NONE	12-14 AWG
HOUSING	81050	FAE-1	POLYCARBONATE	N/A	N/A
NEON BULB	19723	NB-1	N/A	N/A	N/A

Rev.	Description of Change/ SCN#	Date
1	TRANSFER FROM CP TO EP	11-3-04
2	ECR#525 JMR	11-17-10
3	ECR#1610 SCJ	8/31/12
4	ECR#1945 SCJ	1/22/13
5	ECR#2423 SCJ	8/07/13



UNCONTROLLED COPY

<p>THIRD ANGLE PROJECTION TOLERANCES UNLESS OTHERWISE SPECIFIED INCHES: .XX - ±.030 .XXX - ±.015 ANGLES: ±5°</p>	<p>TOOL NO. 0861</p>	<p>Title: LIGHTED FEMALE BRIDGE HOUSING-P/C 37020</p>			
		<p>ETCO Incorporated Engineered Products 25 Bellows Street Warwick, RI 02888 Phone: (401) 467-2400 Fax: (401) 467-9230 www.ETCO.com</p>	<p>DO NOT SCALE DWG.</p>	<p>Drawn By: C. O'REILLY</p>	<p>Date: 8/12/03</p>
		<p>Chk'd/App'd By:</p>	<p>Scale: 3X</p>	<p>Size B</p>	<p>Dwg. No.: FAE-4WB IR1900⁽²⁾</p>

THIS PRINT IS THE PROPERTY OF ETCO INCORPORATED. NO PART OF THIS DESIGN MAY BE USED IN ANY WAY WITHOUT WRITTEN CONSENT FROM ETCO INCORPORATED.