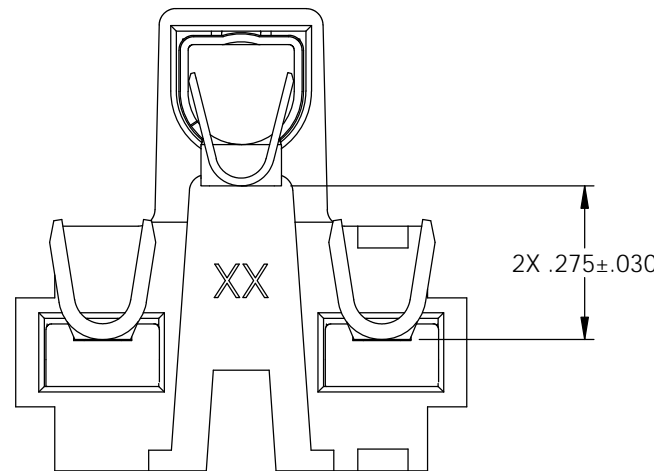
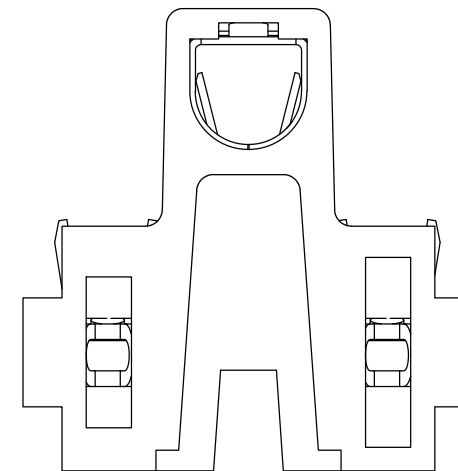
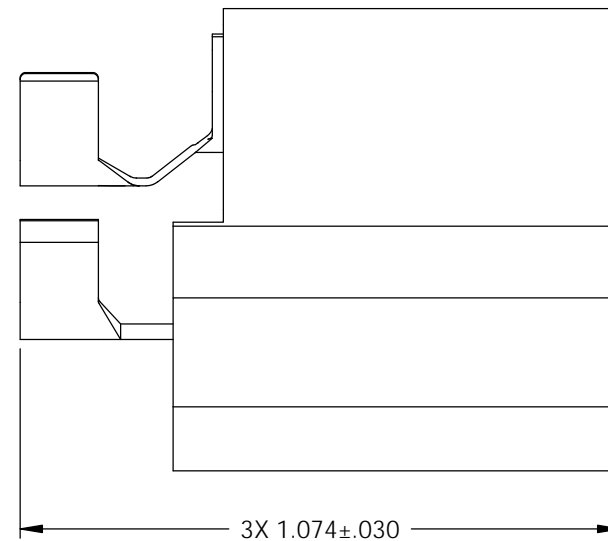
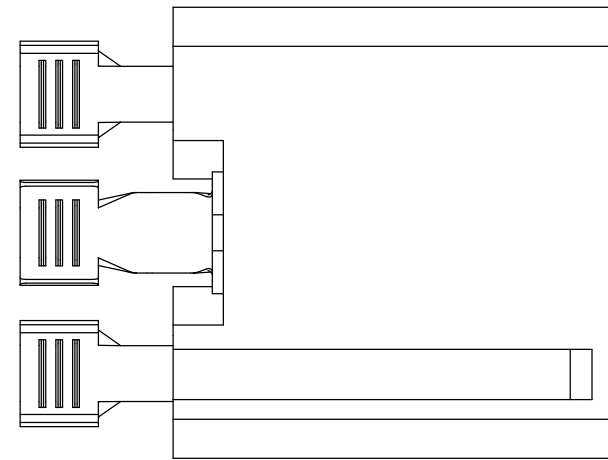
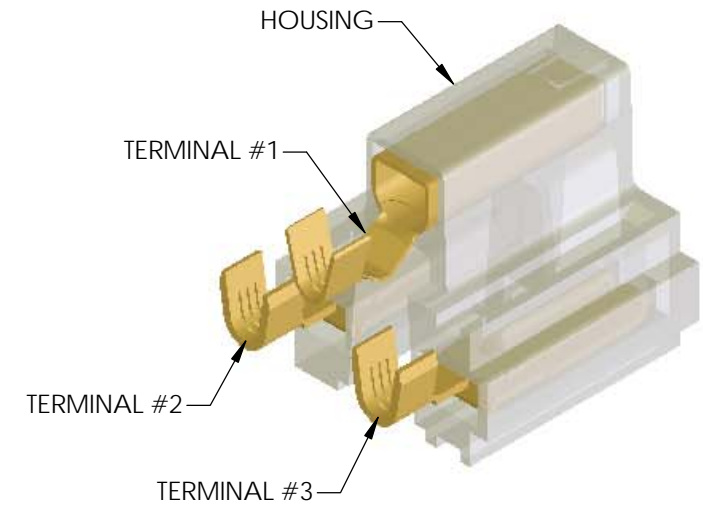




Rev.	Description of Change/ SCN#	Date
-	TRANSFER FROM CP TO EP	8/12/03
1	SCN# 102735 SCJ	11-3-04
2	ECR# 525 JMR	11-17-10
3	ECR# 1610 SCJ	8/31/12
4	ECR# 2423 SCJ	8/07/13

ASSEMBLY ITEM	P/C	DESCRIPTION	MAT'L	PLATING	WIRE RANGE
TERMINAL #1		RE187N-9-HB-FAE (3) (4)	BRASS	NONE	10-12 AWG
TERMINAL #2		CF156F-5-HB-FAE (4)	BRASS	NONE	10-12 AWG
TERMINAL #3		CF156F-5-HB-FAE (4)	BRASS	NONE	10-12 AWG
HOUSING	81050	FAE-1	POLYCARBONATE	N/A	N/A



# UNCONTROLLED COPY

 THIRD ANGLE PROJECTION TOLERANCES UNLESS OTHERWISE SPECIFIED INCHES: .XX - ±.030 .XXX - ±.015 ANGLES: ±5°	TOOL NO. <b>0861</b>	Title: FEMALE BRIDGE HOUSING-P/C 37015		
		DO NOT SCALE DWG.	Drawn By: S.JOHNSON	Date: 1-15-04
ETCO Incorporated Engineered Products 25 Bellows Street Warwick, RI 02888 Phone: (401) 467-2400 Fax: (401) 467-9230 www.ETCO.com		Chk'd/App'd By:	Scale: 3X	Size B
Dwg. No.: FAE-7 IR1900 (2)				