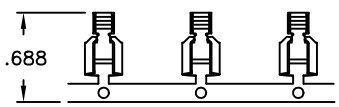
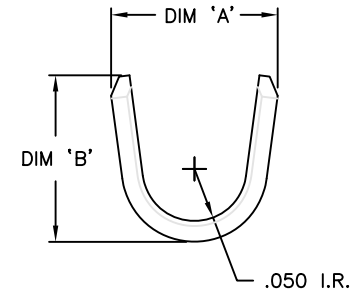
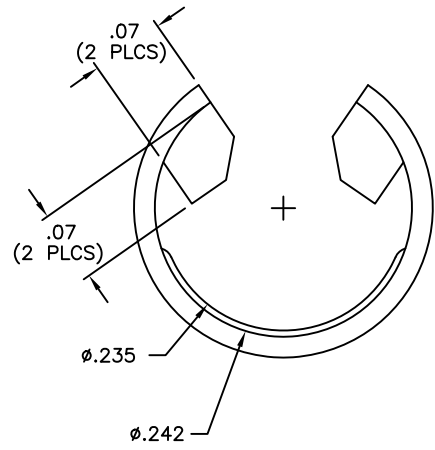
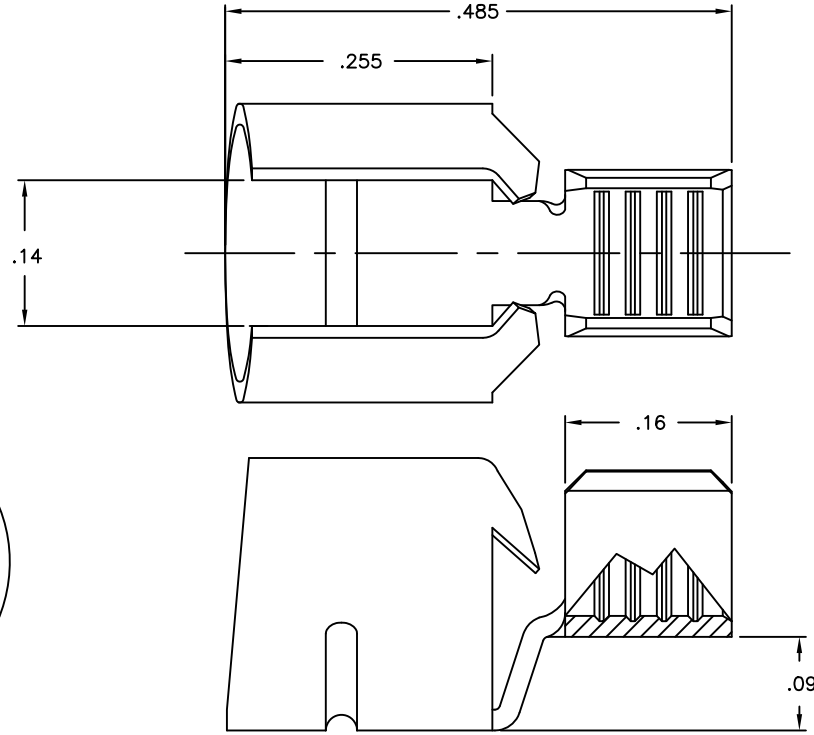


- NOTE:
 1.) MAT'L: .020 THK, PRE-TINNED BRASS,
 #4 TEMPER (FULL HARD),
 PER ETCO METAL CODE NO. 01074.
 2.) PARTS MAY BE COATED WITH A
 LIGHT FILM OF LUBRICATION USED
 IN THE MANUFACTURING PROCESS.

P/C	DESCRIPTION	DIM 'A'	DIM 'B'	WIRE RANGE
09682	FH1-THB	.156	.160	16-14 AWG
09632	FH3-THB	.153	.133	20-16 AWG

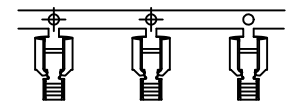
Rev.	Description of Change/ SCN#	Date
1	SCN# 102153 SCJ	3-27-03



DIRECTION EXITING TOOL,
EARS UP, TO THE BACK



FULL VIEW
REFERENCE ONLY



DIRECTION TOWARD APPLICATOR,
EARS UP, TO THE FRONT

UNCONTROLLED COPY			
 THIRD ANGLE PROJECTION	TOOL NO. 0212	Title: FUSE HOLDER	
		DO NOT SCALE DWG.	Drawn By: P. McCormick Checked: _____ Dwg. No.: C-
TOLERANCES UNLESS OTHERWISE SPECIFIED .XX - ±.030 .XXX - ±.015 Angles - ±5°		ETCO Incorporated Engineered Products 25 Bellows Street Warwick, R.I. 02888 Phone: (401)467-2400 FAX: (401)467-9230	
		FH1 FH3	

THIS PRINT IS THE PROPERTY OF ETCO INCORPORATED. NO PART OF THIS DESIGN MAY BE USED IN ANY WAY WITHOUT WRITTEN CONSENT FROM ETCO INCORPORATED.

CUSTOMER DRAWING