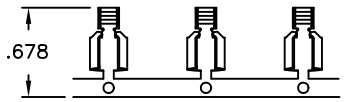
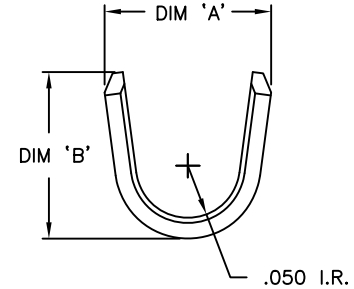
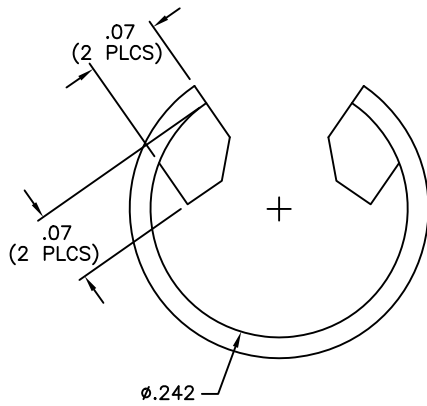
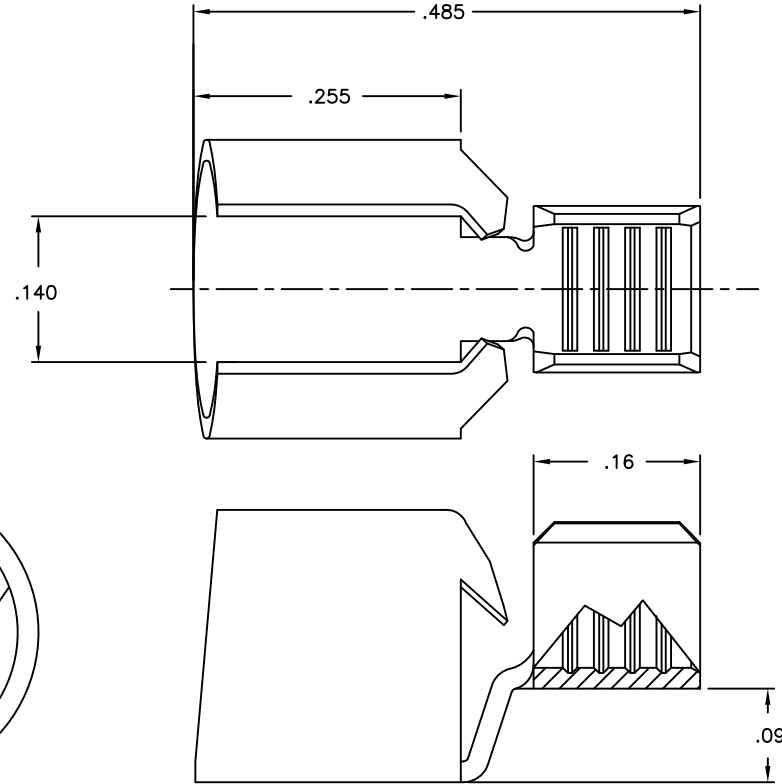


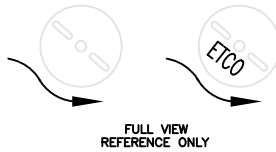
- NOTE:  
 1.) MAT'L: .020 THK, PRE-TINNED BRASS,  
 #4 TEMPER (FULL HARD),  
 PER ETCO METAL CODE NO. 01074.  
 2.) PARTS MAY BE COATED WITH A  
 LIGHT FILM OF LUBRICATION USED  
 IN THE MANUFACTURING PROCESS.

P/C	DESCRIPTION	DIM 'A'	DIM 'B'	WIRE RANGE
09683	FH2-THB	.156	.160	16-14 AWG
09633	FH4-THB	.153	.133	20-16 AWG

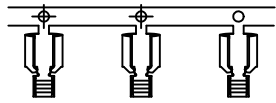
Rev.	Description of Change/ SCN#	Date
1	SCN# 102153 SCJ	3-27-03



DIRECTION EXITING TOOL,  
EARS UP, TO THE BACK



FULL VIEW  
REFERENCE ONLY



DIRECTION TOWARD APPLICATOR,  
EARS UP, TO THE FRONT

# UNCONTROLLED COPY

 THIRD ANGLE PROJECTION	TOOL NO. 0212	Title: FUSE HOLDER	
	TOLERANCES UNLESS OTHERWISE SPECIFIED .XX - ±.030 .XXX - ±.015 Angles - ±5°		DO NOT SCALE DWG.
ETCO Incorporated Engineered Products 25 Bellows Street Warwick, R.I. 02888 Phone: (401)467-2400 FAX: (401)467-9230			Checked: Scale: 8:1
		Dwg. No.: C- FH2, FH4	

THIS PRINT IS THE PROPERTY OF ETCO INCORPORATED. NO PART OF THIS DESIGN MAY BE USED IN ANY WAY WITHOUT WRITTEN CONSENT FROM ETCO INCORPORATED.

CUSTOMER DRAWING