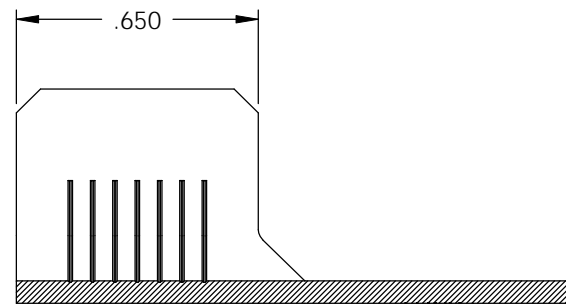
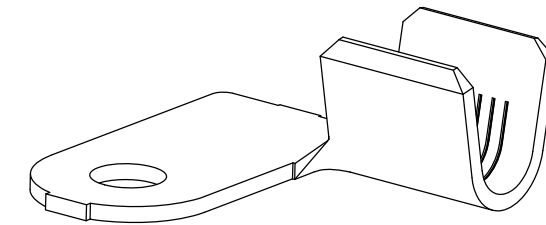
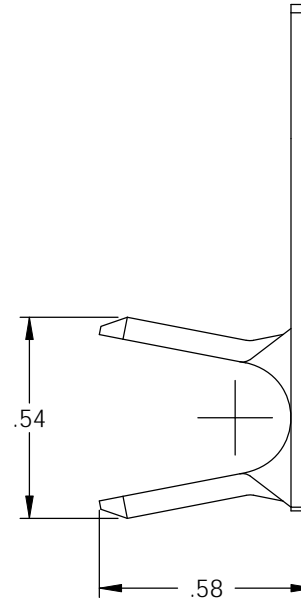
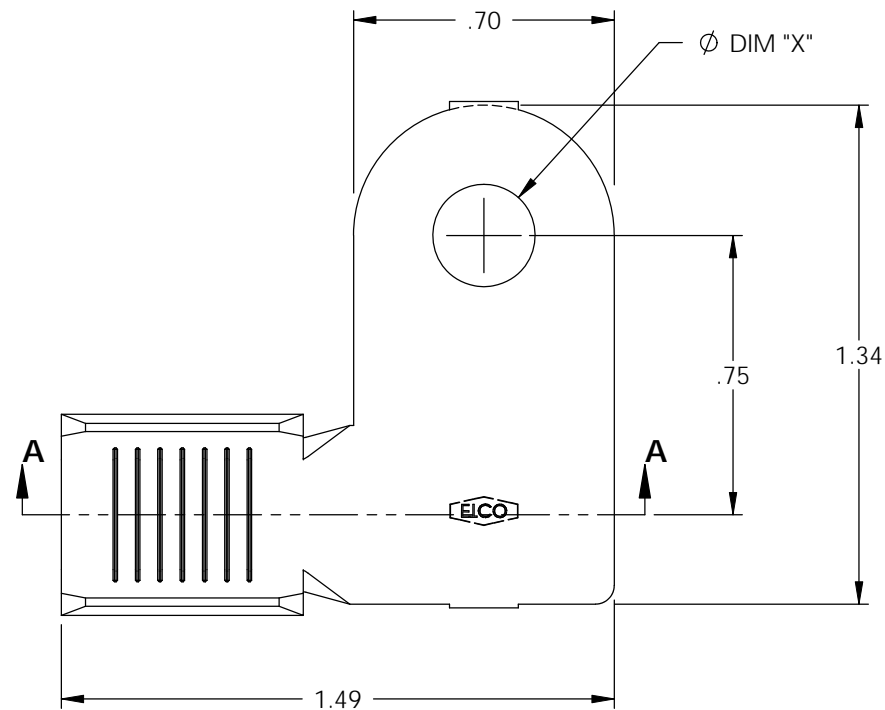


NOTES:

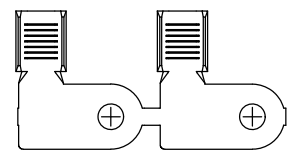
1. MATERIAL: .060 THICK C26000 BRASS; 1/2 HARD, ANNEALED TO TEMPER , PER ETCO METAL CODE 07035.
2. WIRE RANGE: #2 AWG
3. PARTS MAY BE COATED WITH A LIGHT FILM OF LUBRICATION USED IN THE MANUFACTURING PROCESS.



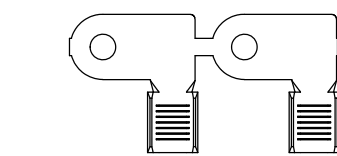
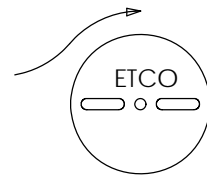
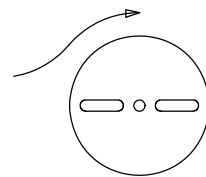
SECTION A-A  
SCALE 2 : 1

P/C	DESCRIPTION	DIM 'X'
82331	FR554L-275-HB	Ø .280-.270
82333	FR554L-281-HB	Ø .286-.276
82335	FR554L-350-HB	Ø .355-.345
82337	FR554L-3/8-HB	Ø .408-.398

Rev.	Description of Change/ SCN#	Date
1	TRANSFER FROM CP SCJ	8-25-08



DIRECTION EXITING TOOL  
EARS UP, TO THE BACK



DIRECTION TOWARDS APPLICATOR  
EARS UP, TO THE FRONT

# UNCONTROLLED COPY

<p>THIRD ANGLE PROJECTION TOLERANCES UNLESS OTHERWISE SPECIFIED INCHES: .XX - ±.030 .XXX - ±.015 ANGLES: ±5°</p>	<p>TOOL NO. <b>0844</b></p>	<p>Title: <b>FLAG RING TERMINAL</b></p>		
		<p>DO NOT SCALE DWG.</p>	<p>Drawn By: <b>S.JOHNSON</b></p>	<p>Date: <b>8-25-08</b></p>
<p>ETCO Incorporated Engineered Products 25 Bellows Street Warwick, RI 02888 Phone: (401) 467-2400 Fax: (401) 467-9230 www.ETCO.com</p>		<p>Chk'd/App'd By:</p>	<p>Scale: <b>2X</b></p>	<p>Size <b>B</b></p>
		<p>Dwg. No.: <b>FR554L cust</b></p>		