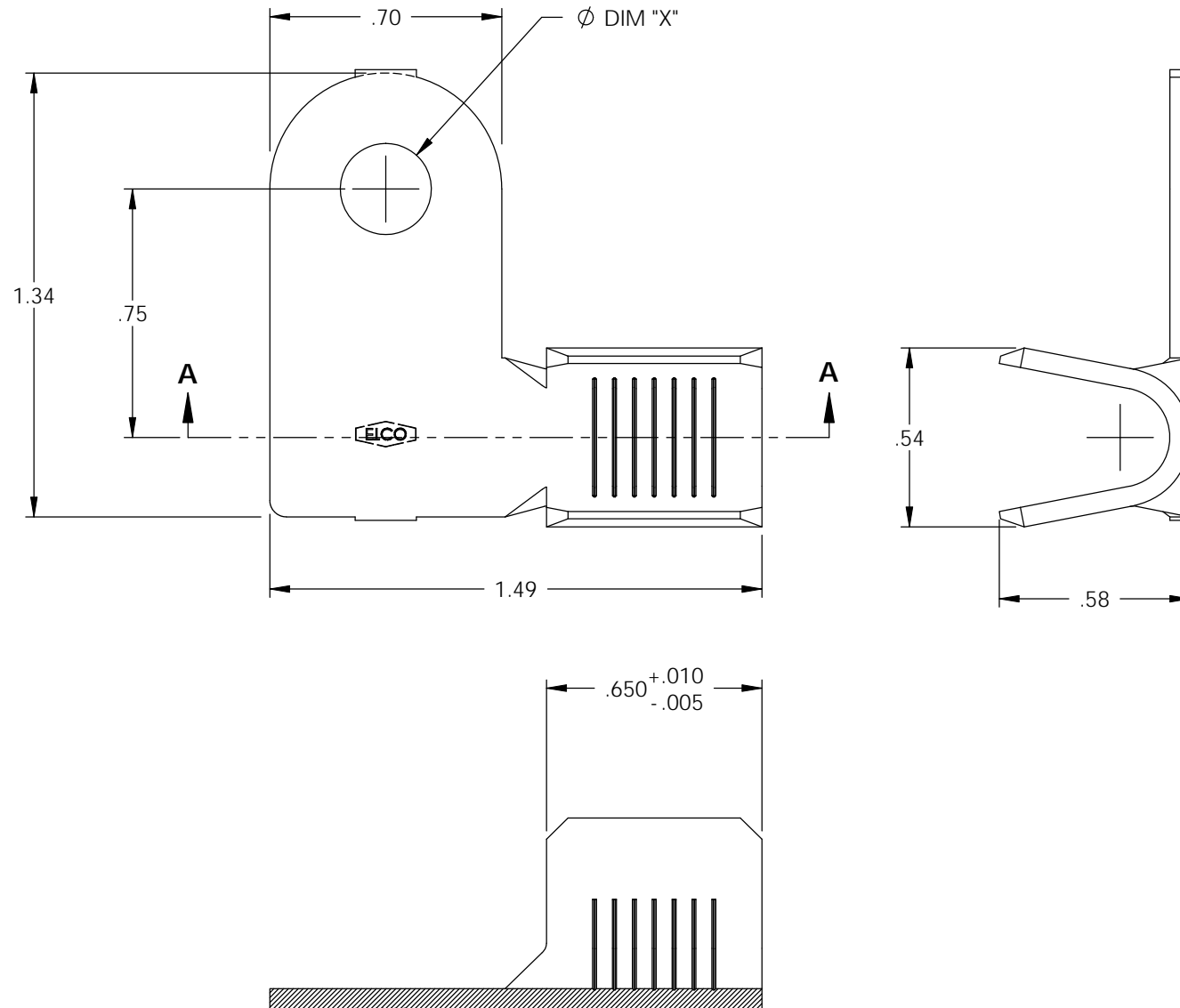


NOTES:

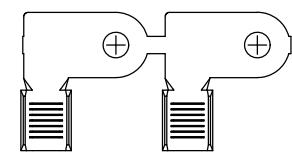
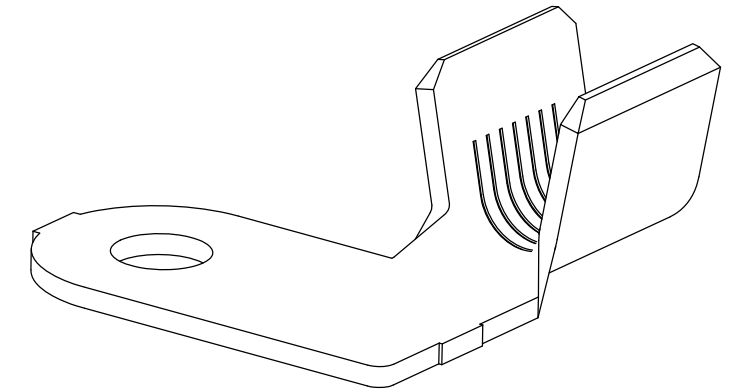
1. MATERIAL: .060 THICK C26000 BRASS; 1/2 HARD, ANNEALED TO TEMPER, PER ETCO METAL CODE 07035.
2. WIRE RANGE: #2 AWG
3. PARTS MAY BE COATED WITH A LIGHT FILM OF LUBRICATION USED IN THE MANUFACTURING PROCESS.

P/C	DESCRIPTION	DIM 'X'
82341	FR554R-275-HB	Ø .275
82343	FR554R-281-HB	Ø .281
82345	FR554R-350-HB	Ø .350
82347	FR554R-3/8-HB	Ø .403

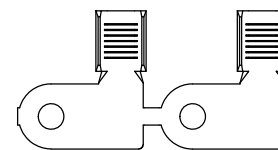
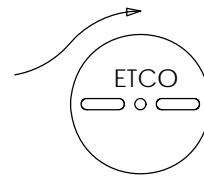
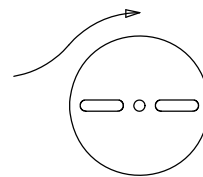
Rev.	Description of Change/ SCN#	Date
1	TRANSFER FROM CP SCJ	8-25-08



SECTION A-A
SCALE 2 : 1



DIRECTION EXITING TOOL
EARS UP, TO THE FRONT



DIRECTION TOWARDS APPLICATOR
EARS UP, TO THE BACK

UNCONTROLLED COPY

<p>THIRD ANGLE PROJECTION TOLERANCES UNLESS OTHERWISE SPECIFIED INCHES: .XX - ±.030 .XXX - ±.015 ANGLES: ±5°</p>	<p>TOOL NO. 0844</p>	<p>Title: FLAG RING TERMINAL</p>			
		<p>ETCO Incorporated Engineered Products 25 Bellows Street Warwick, RI 02888 Phone: (401) 467-2400 Fax: (401) 467-9230 www.ETCO.com</p>	<p>DO NOT SCALE DWG.</p>	<p>Drawn By: S.JOHNSON</p>	<p>Date: 8-25-08</p>
		<p>Chk'd/App'd By:</p>	<p>Scale: 2X</p>	<p>Size: B</p>	<p>Dwg. No.: FR554R cust</p>