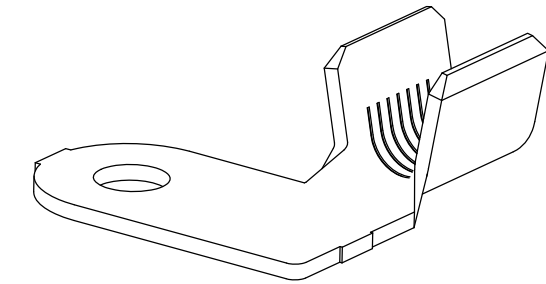
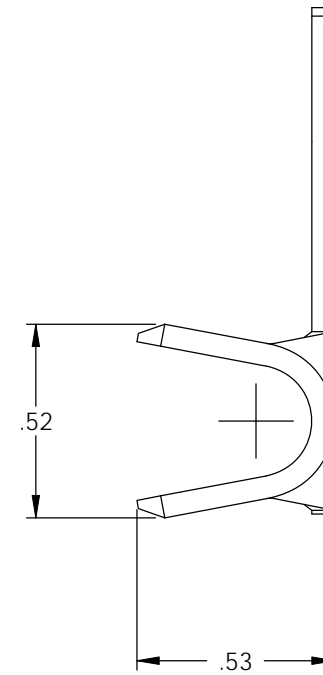
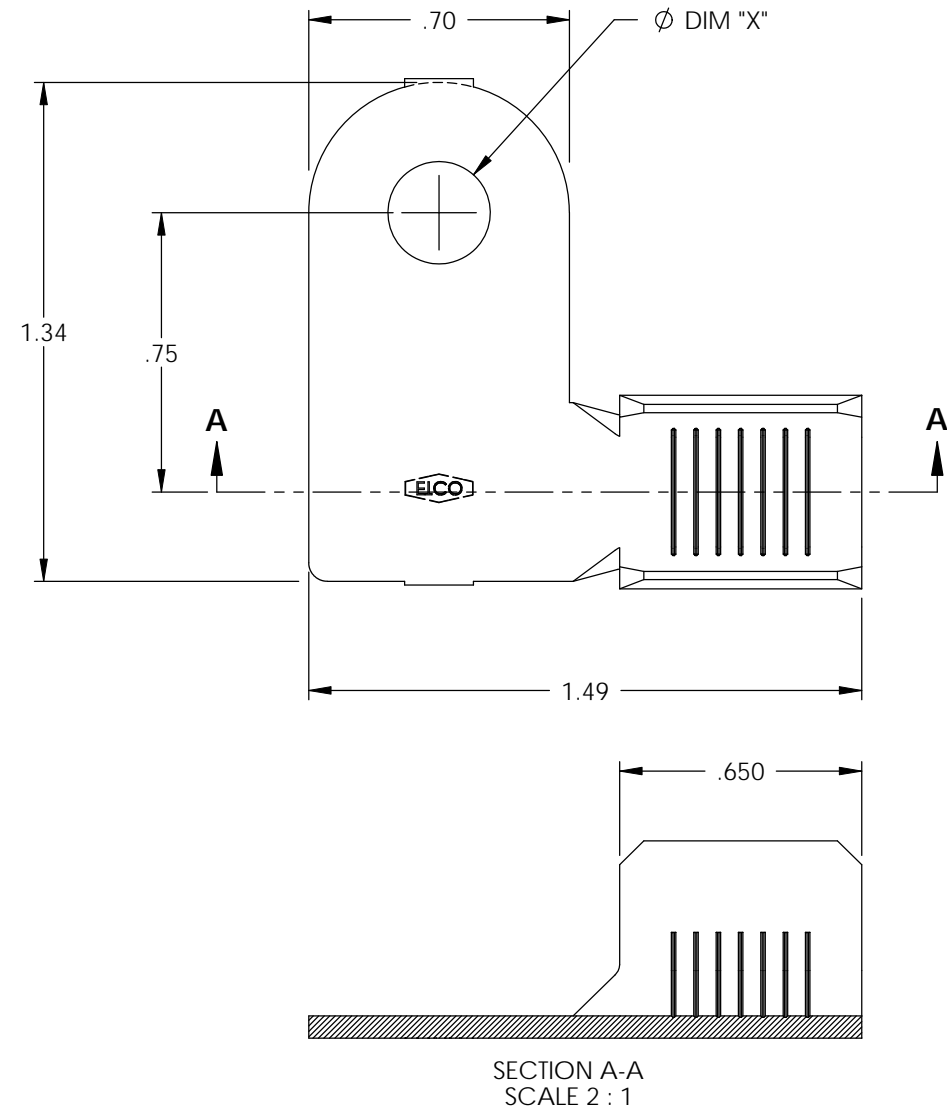


NOTES:

1. MATERIAL: .060 THICK C26000 BRASS; 1/2 HARD, ANNEALED TO TEMPER PER ETCO METAL CODE 07035.
2. WIRE RANGE: #4-#6 AWG
3. PARTS MAY BE COATED WITH A LIGHT FILM OF LUBRICATION USED IN THE MANUFACTURING PROCESS.

P/C	DESCRIPTION	DIM 'X'
82340	FR555R-375-HB	Ø .375
82342	FR555R-275-HB	Ø .275

Rev.	Description of Change/ SCN#	Date
1	TRANSFER FROM CP SCJ	8-25-08



THIS PRINT IS THE PROPERTY OF ETCO INCORPORATED. NO PART OF THIS DESIGN MAY BE USED IN ANY WAY WITHOUT WRITTEN CONSENT FROM ETCO INCORPORATED.

UNCONTROLLED COPY

<p>THIRD ANGLE PROJECTION TOLERANCES UNLESS OTHERWISE SPECIFIED INCHES: .XX - ±.030 .XXX - ±.015 ANGLES: ±5°</p>	<p>TOOL NO. 0844</p>	<p>Title: FLAG RING TERMINAL</p>		
		<p>DO NOT SCALE DWG.</p>	<p>Drawn By: S. JOHNSON</p>	<p>Date: 8-25-08</p>
<p>ETCO Incorporated Engineered Products 25 Bellows Street Warwick, RI 02888 Phone: (401) 467-2400 Fax: (401) 467-9230 www.ETCO.com</p>		<p>Chk'd/App'd By:</p>	<p>Scale: 2X</p>	<p>Size B</p>
		<p>Dwg. No.: FR555R cust</p>		