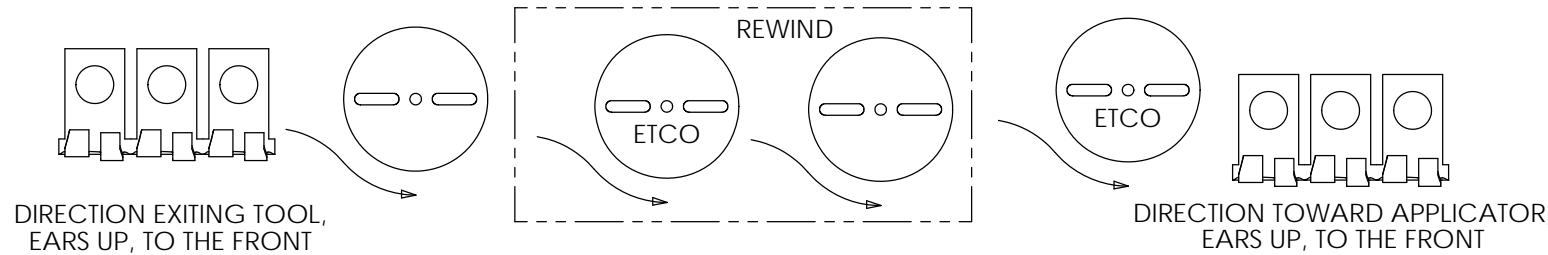
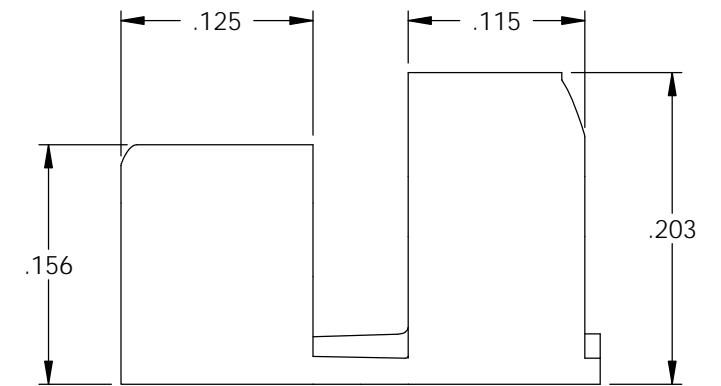
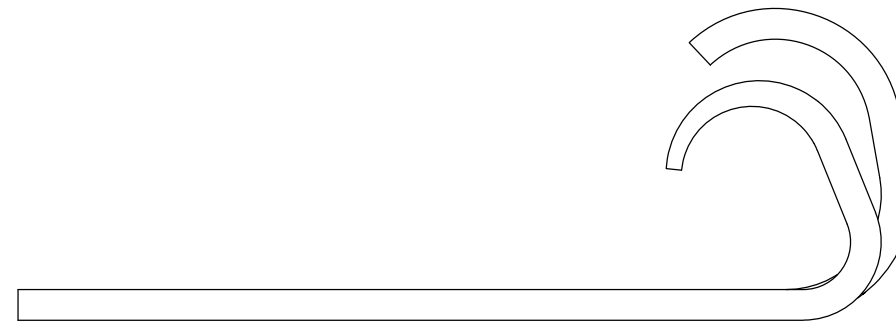
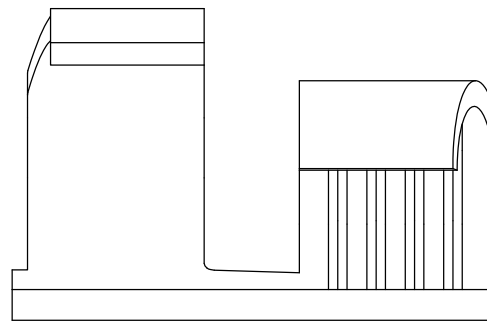
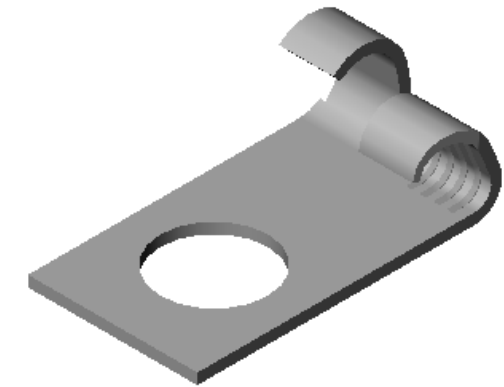
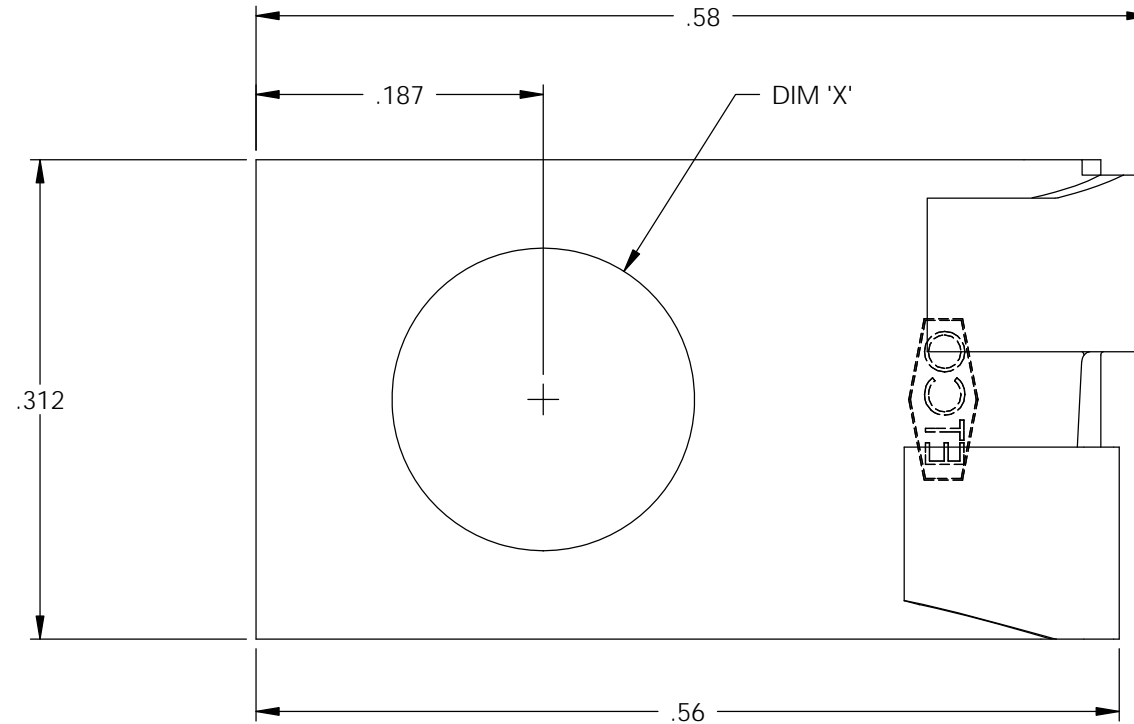


NOTES:

1. MATERIAL: .020 THICK, BRASS, #2 TEMPER (1/2 HARD), PER ETCO METAL CODE 00410.
2. MATERIAL: .020 THICK, PRE-TINNED BRASS, #2 TEMPER (1/2 HARD), PER ETCO METAL CODE 01470.
3. PARTS MAY BE COATED WITH A LIGHT FILM OF LUBRICATION USED IN THE MANUFACTURING PROCESS.
4. WIRE RANGE: 20-16 AWG.
5. INSULATION DIAMETER RANGE:  $\phi$ .100-.125

P/C	DESCRIPTION	DIM 'X'	MAT'L
05010	FR810R-6-HB	.150-.140	NOTE 1
05020	FR810R-6-THB	.150-.140	NOTE 2
05050	FR810R-8-HB	.176-.166	NOTE 1
05060	FR810R-8-THB	.176-.166	NOTE 2
05110	FR810R-10-HB	.202-.192	NOTE 1
05120	FR810R-10-THB	.202-.192	NOTE 2
05122	FR810R-14-THB	.255-.245	NOTE 2

Rev.	Description of Change/ SCN#	Date
1	REDRAWN ON SOLIDWORKS NO CHANGES SCJ ORG.ENG.DWG.DATE: 4-26-67	3-19-08



THIS PRINT IS THE PROPERTY OF ETCO INCORPORATED. NO PART OF THIS DESIGN MAY BE USED IN ANY WAY WITHOUT WRITTEN CONSENT FROM ETCO INCORPORATED.

# UNCONTROLLED COPY

<p>THIRD ANGLE PROJECTION TOLERANCES UNLESS OTHERWISE SPECIFIED INCHES: .XX - <math>\pm</math>.030 .XXX - <math>\pm</math>.015 ANGLES: <math>\pm</math>5°</p>	<p>TOOL NO. <b>0079</b></p>	<p>Title: <b>FLAG RING</b></p>		
		<p>DO NOT SCALE DWG.</p>	<p>Drawn By: <b>S.JOHNSON</b></p>	<p>Date: <b>3-19-08</b></p>
<p>ETCO Incorporated Engineered Products 25 Bellows Street Warwick, RI 02888 Phone: (401) 467-2400 Fax: (401) 467-9230 www.ETCO.com</p>		<p>Chk'd/App'd By:</p>	<p>Scale: <b>8X</b></p>	<p>Size</p>
		<p>Dwg. No.: <b>FR810R cust</b></p>		