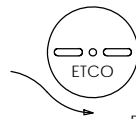
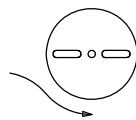
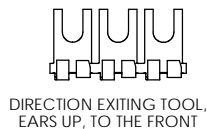
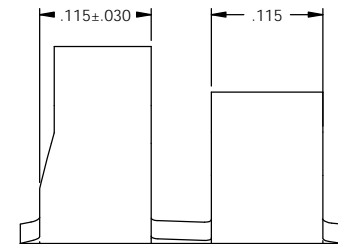
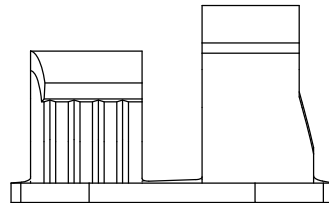
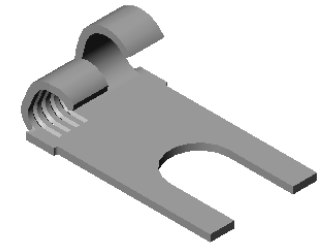
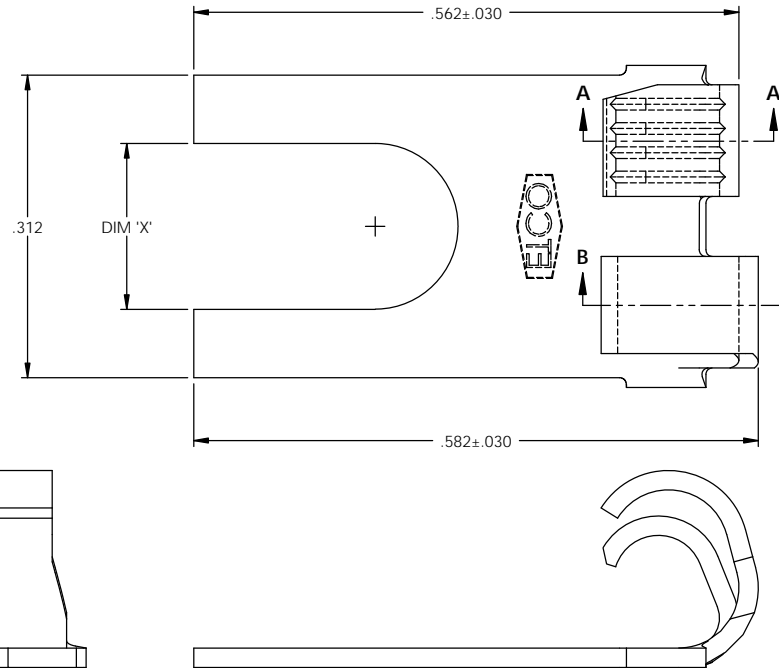
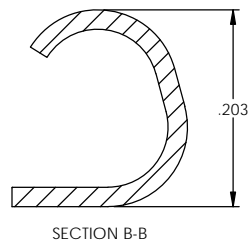
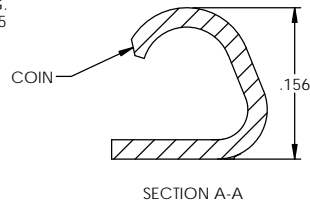


- NOTE:
 1.) MAT'L: .020 THK., BRASS,
 #2 TEMPER (HALF HARD),
 PRE ETCO METAL CODE NO. 00410.
 2.) MAT'L: .020 THK., PRE-TINNED BRASS,
 #2 TEMPER (HALF HARD),
 PRE ETCO METAL CODE NO. 01470.
 3.) PARTS MAY BE COATED WITH A LIGHT
 FILM OF LUBRICATION USED IN THE
 MANUFACTURING PROCESS.
 4.) WIRE RANGE: 16-20 AWG.
 5.) INSUL RANGE: ϕ .100-.125

P/C	DESCRIPTION	DIM 'X'	MAT'L
05310	FS810L-6-HB	.145	NOTE 1
05320	FS810L-6-THB	.145	NOTE 2
05350	FS810L-8-HB	.171	NOTE 1
05360	FS810L-8-THB	.171	NOTE 2
05390	FS810L-10-HB	.197	NOTE 1
05400	FS810L-10-THB	.197	NOTE 2

Rev.	Description of Change/ SCN#	Date
2	REDRAWN ON SOLIDWORKS NO CHANGES SCJ ORG.ENG.DWG.DATE: 4-20-67	3-18-08
3	ECR# 1960 SCJ	2/04/13



DIRECTION TOWARD APPLICATOR,
EARS UP, TO THE BACK

UNCONTROLLED COPY

THIRD ANGLE PROJECTION		TOOL NO.	Title:	
TOLERANCES UNLESS OTHERWISE SPECIFIED		0078	FLAG SPADE	
INCHES: XX - \pm .030 XXX - \pm .015		DO NOT SCALE DWG.		Drawn By: S.JOHNSON
ANGLES: \pm 5°		Chk'd/App'd By:		Date: 3-18-08
ETCO		Scale: 8X		Size: B
		Dwg. No.:		FS810L cust
		ETCO Incorporated Engineered Products 25 Bellows Street Warwick, RI 02888 Phone: (401) 467-2400 Fax: (401) 467-9230 www.ETCO.com		