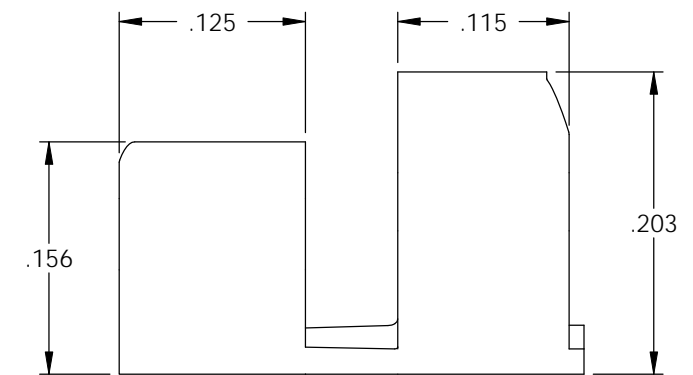
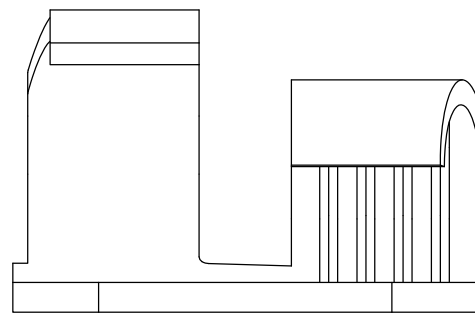
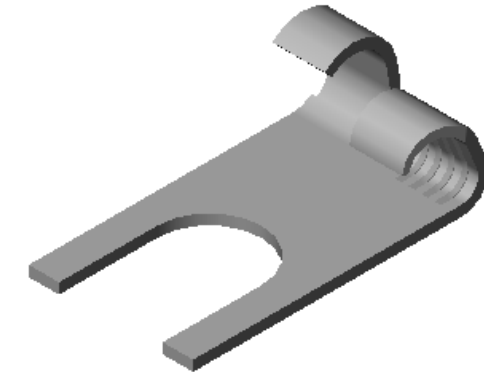
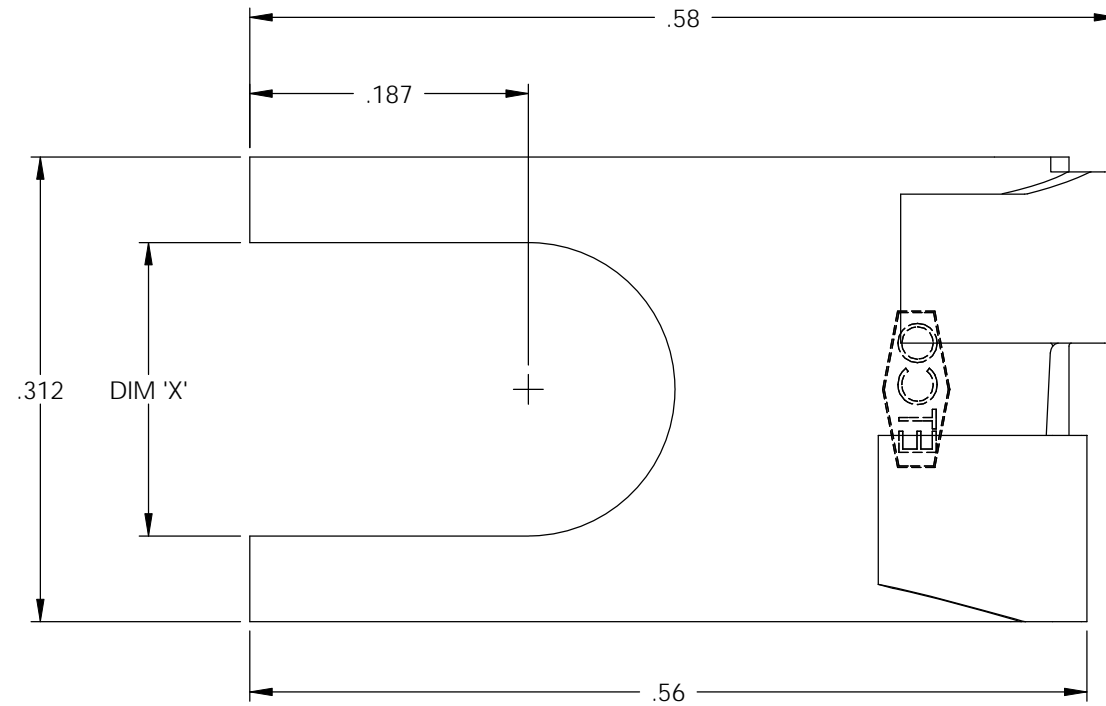


NOTES:

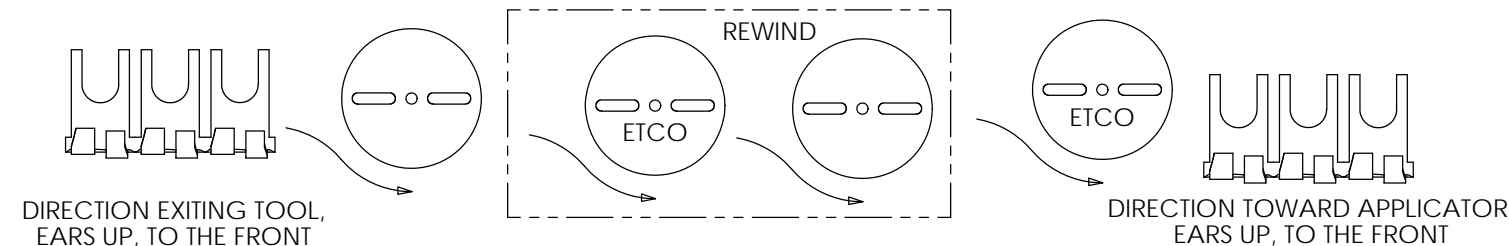
1. MATERIAL: .020 THICK, BRASS, #2 TEMPER (1/2 HARD), PER ETCO METAL CODE 00410.
2. MATERIAL: .020 THICK, PRE-TINNED BRASS, #2 TEMPER (1/2 HARD), PER ETCO METAL CODE 01470.
3. PARTS MAY BE COATED WITH A LIGHT FILM OF LUBRICATION USED IN THE MANUFACTURING PROCESS.
4. WIRE RANGE: 20-16 AWG.
5. INSULATION DIAMETER RANGE: ϕ .100-.125

P/C	DESCRIPTION	DIM 'X'	MAT'L
05330	FS810R-6-HB	.145	NOTE 1
05340	FS810R-6-THB	.145	NOTE 2
05370	FS810R-8-HB	.171	NOTE 1
05380	FS810R-8-THB	.171	NOTE 2
05410	FS810R-10-HB	.197	NOTE 1
05420	FS810R-10-THB	.197	NOTE 2

Rev.	Description of Change/ SCN#	Date
1	REDRAWN ON SOLIDWORKS NO CHANGES SCJ ORG.ENG.DWG.DATE: 4-12-67	3-19-08



UNCONTROLLED COPY



THIS PRINT IS THE PROPERTY OF ETCO INCORPORATED. NO PART OF THIS DESIGN MAY BE USED IN ANY WAY WITHOUT WRITTEN CONSENT FROM ETCO INCORPORATED.

<p>THIRD ANGLE PROJECTION TOLERANCES UNLESS OTHERWISE SPECIFIED INCHES: .XX - ±.030 .XXX - ±.015 ANGLES: ±5°</p>		<p>TOOL NO. 0079</p>	<p>Title: FLAG SPADE</p>		
<p>DO NOT SCALE DWG.</p>		<p>Drawn By: S.JOHNSON</p>	<p>Date: 3-19-08</p>	<p>Chk'd/App'd By:</p>	
<p>ETCO Incorporated Engineered Products 25 Bellows Street Warwick, RI 02888 Phone: (401) 467-2400 Fax: (401) 467-9230 www.ETCO.com</p>		<p>Scale: 8X</p>	<p>Size:</p>	<p>Dwg. No.: FS810R cust</p>	