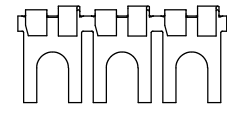
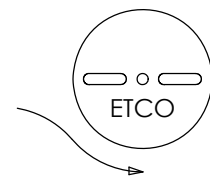
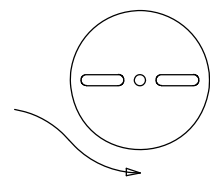
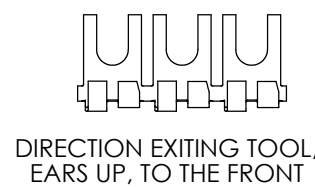
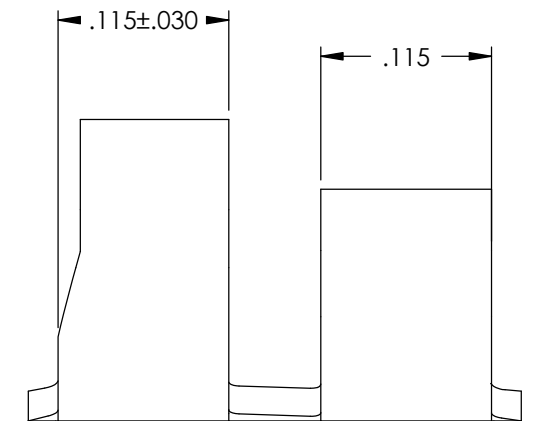
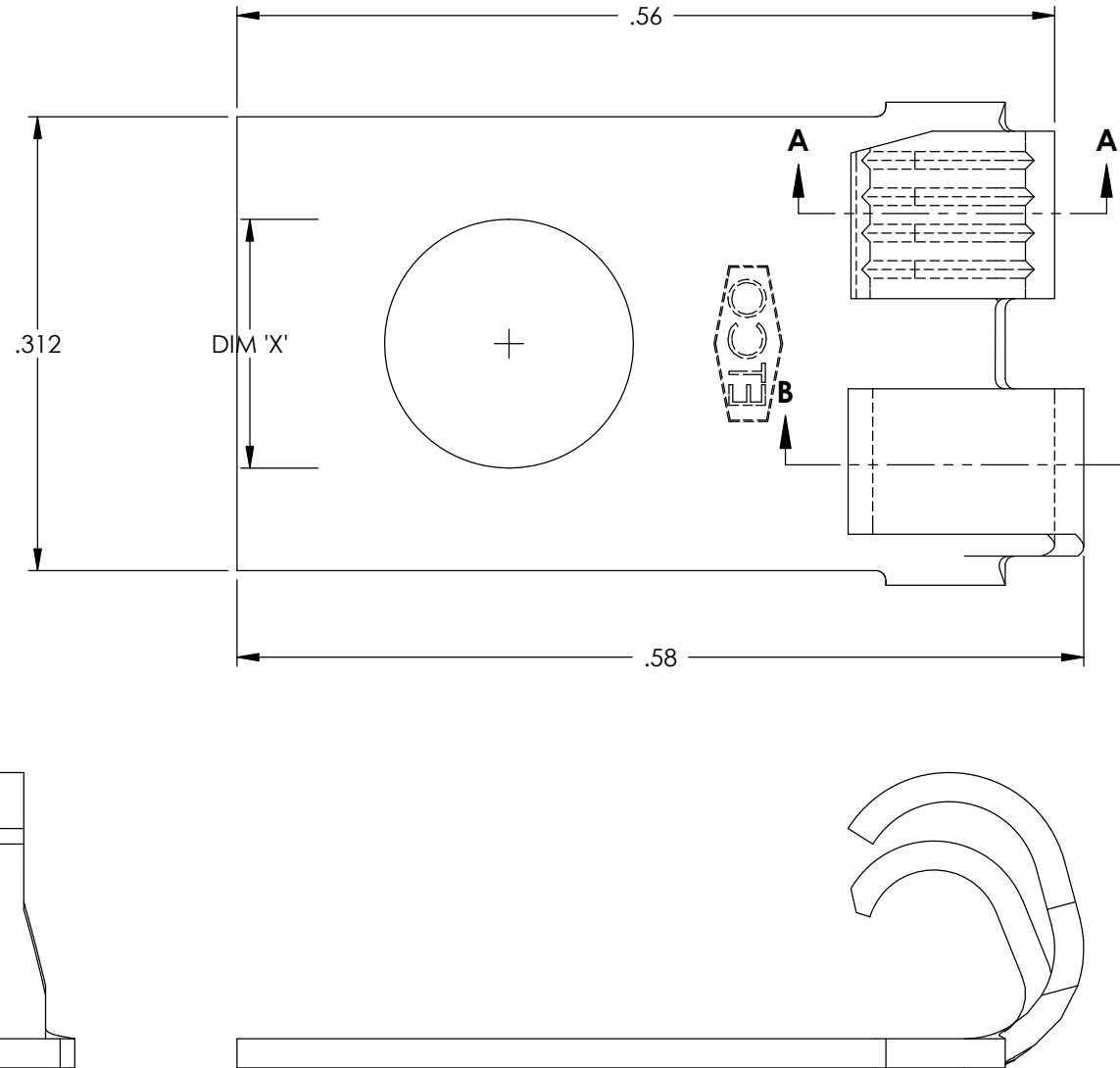
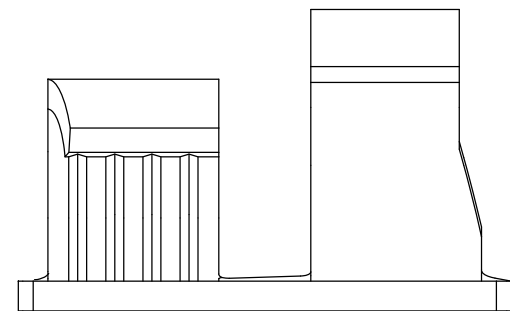
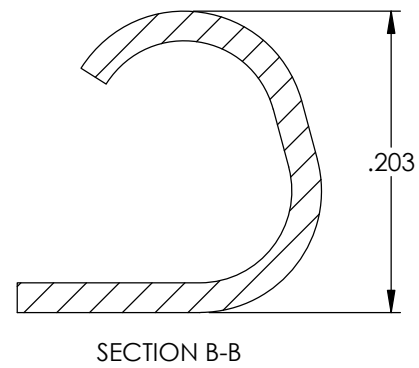
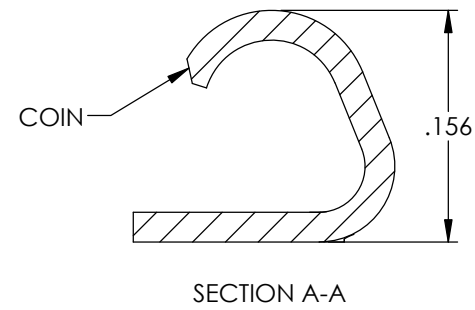


NOTE:

- 1.) MAT'L: .020 THK., BRASS, #2 TEMPER (HALF HARD), PRE ETCO METAL CODE NO. 00390.
- 2.) MAT'L: .020 THK., PRE-TINNED BRASS, #2 TEMPER (HALF HARD), PRE ETCO METAL CODE NO. 01450.
- 3.) PARTS MAY BE COATED WITH A LIGHT FILM OF LUBRICATION USED IN THE MANUFACTURING PROCESS.
- 4.) WIRE RANGE: 16-20 AWG.
- 5.) INSUL RANGE: ϕ .100-.125

P/C	DESCRIPTION	DIM 'X'	MAT'L
05361	FS812L-8-HB	.171	NOTE 1
05362	FS812L-8-THB	.171	NOTE 2
05366	FS812L-212-HB	.212	NOTE 1

Rev.	Description of Change/ SCN#	Date
1	SCN# 102746 SCJ ORG.ENG.DWG.DATE: 3-24-93	11-16-04
2	ADDED P/Cs SCN#104162 SCJ	8-1-07
3	ECR# 1960 SCJ	2/04/13



DIRECTION TOWARD APPLICATOR,
EARS UP, TO THE BACK

THIS PRINT IS THE PROPERTY OF ETCO INCORPORATED. NO PART OF THIS DESIGN MAY BE USED IN ANY WAY WITHOUT WRITTEN CONSENT FROM ETCO INCORPORATED.

UNCONTROLLED COPY

<p>THIRD ANGLE PROJECTION TOLERANCES UNLESS OTHERWISE SPECIFIED INCHES: .XX - ±.030 .XXX - ±.015 ANGLES: ±5°</p>	<p>TOOL NO. 0078</p>	<p>Title: FLAG SPADE</p>		
	<p>ETCO Incorporated Engineered Products 25 Bellows Street Warwick, RI 02888 Phone: (401) 467-2400 Fax: (401) 467-9230 www.ETCO.com</p>	<p>DO NOT SCALE DWG.</p>	<p>Drawn By: S.JOHNSON</p>	<p>Date: 11-16-04</p>
		<p>Chk'd/App'd By:</p>	<p>Scale: 8X</p>	<p>Size B</p>
		<p>Dwg. No.: FS812L cust</p>		