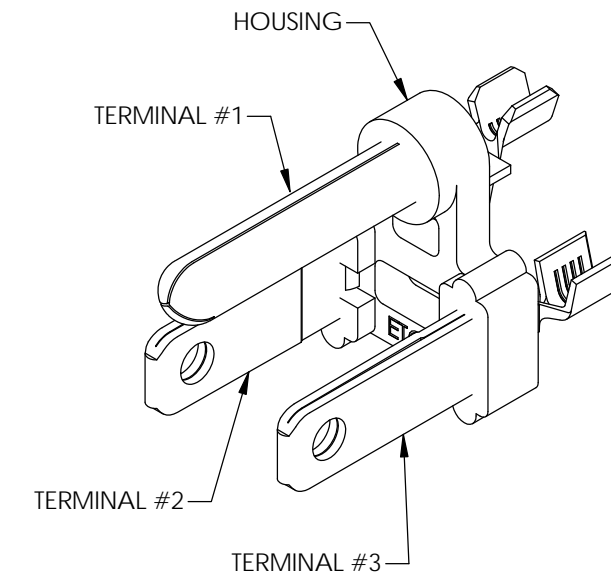
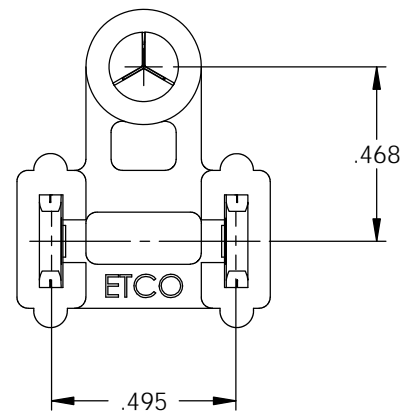
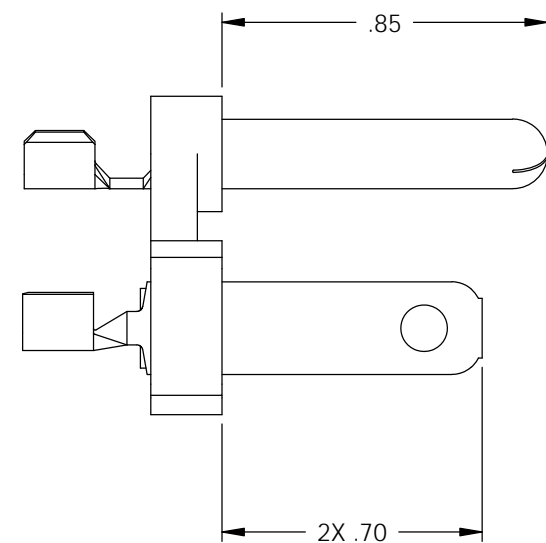
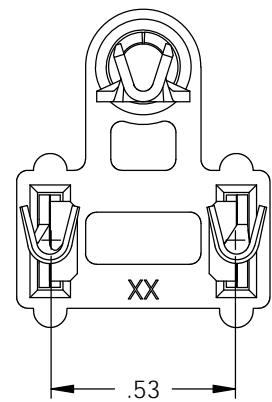
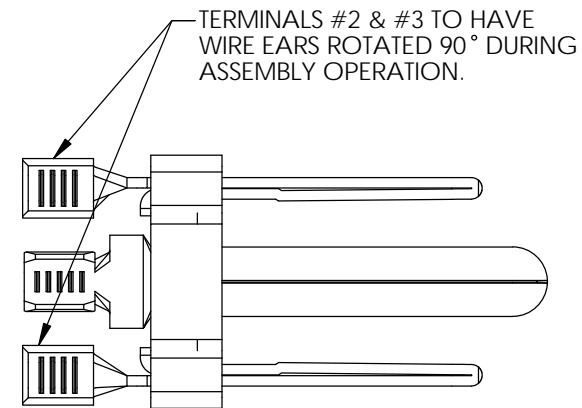


NOTES:
1. THIS PART IS UL RECOGNIZED.

ASSY ITEM	P/C	DESCRIPTION	MAT'L	PLATING	WIRE RANGE
TERMINAL #1	14029	PN187H3*CRA-HB	BRASS	NONE	14-18 AWG
TERMINAL #2	14172	PPBF5*A-HB	BRASS	NONE	14-18 AWG
TERMINAL #3	14172	PPBF5*A-HB	BRASS	NONE	14-18 AWG
HOUSING	81011	BHBP01	POLYPROPYLENE	N/A	N/A

Rev.	Description of Change/ SCN#	Date
-	TRANSFER FROM CP TO EP	5-21-04
1	SCN# 103169 SCJ	4-7-06
2	SCN# 103195 SCJ	6-7-06
3	ECR# 1264 SCJ	4/11/12



UNCONTROLLED COPY

<p>THIRD ANGLE PROJECTION TOLERANCES UNLESS OTHERWISE SPECIFIED INCHES: .XX - ±.010 .XXX - ±.005 MILLIMETERS: .X - ±.25 .XX - ±.13 ANGLES - ±2°</p>	<p>TOOL NO. 0861</p>	<p>Title: GROUND BLADE BRIDGE ASSEMBLY-P/C 37002</p>	
		<p>ETCO Incorporated Engineered Products 25 Bellows Street Warwick, R.I. 02888 Phone: (401)467-2400 FAX: (401)467-9230 www.ETCO.com</p>	<p>DO NOT SCALE DWG.</p>
		<p>Chk'd/App'd By:</p>	<p>Scale: 2X Size: B</p>
		<p>Dwg. No.: GBBA-1</p>	