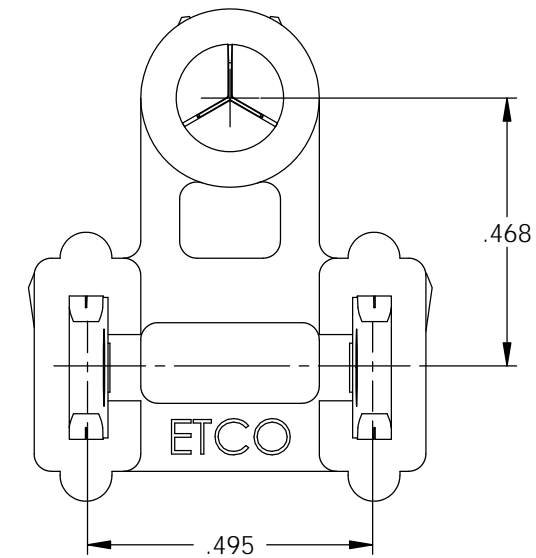
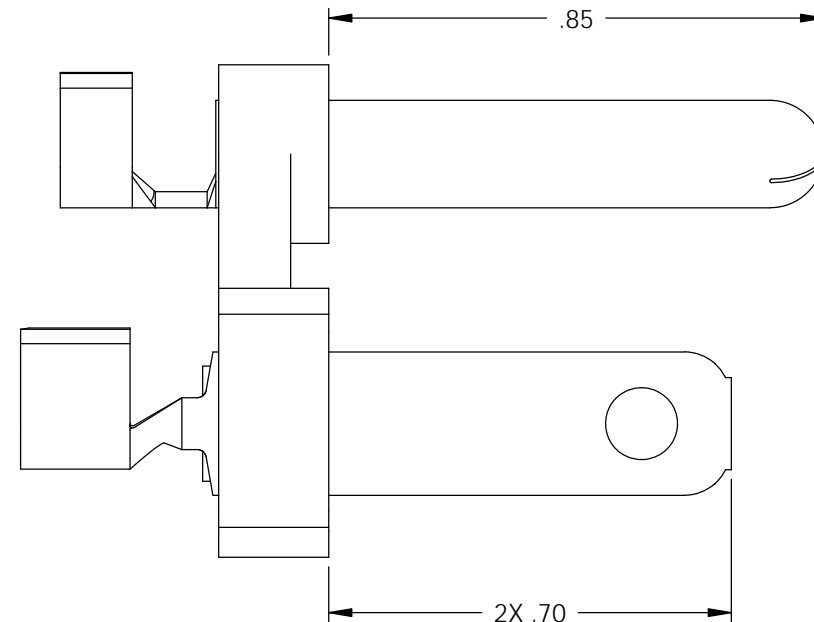
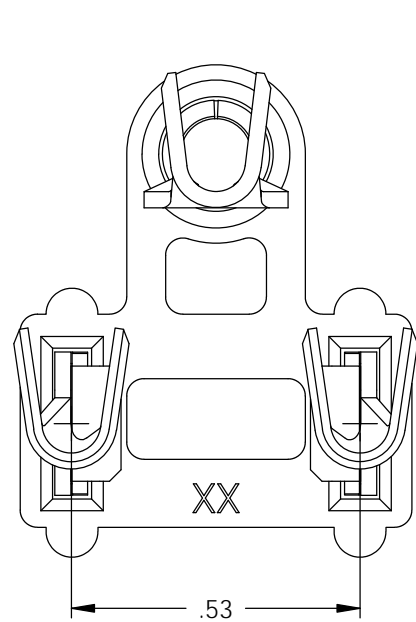
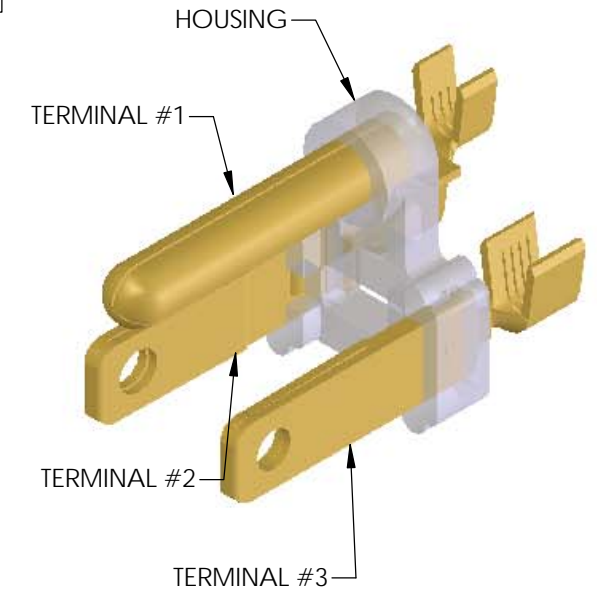
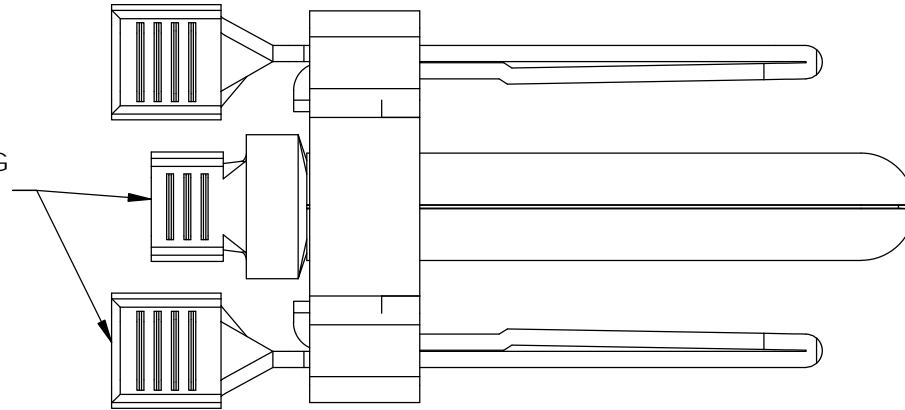


NOTES:
 1. ATTACHMENT PLUG BLADES ARE UL RECOGNIZED.
 ETCO FILE NUMBER E164056

ASS'Y ITEM	P/C	DESCRIPTION	MAT'L	PLATING	WIRE RANGE
TERMINAL #1	14275	PN187H10*CRA-HB	BRASS	NONE	10-12 AWG
TERMINAL #2	14276	PPBF14*A-HB	BRASS	NONE	10-12 AWG
TERMINAL #3	14276	PPBF14*A-HB	BRASS	NONE	10-12 AWG
HOUSING	81011	BHBP01	POLYPROPYLENE	N/A	N/A

Rev.	Description of Change/ SCN#	Date
-	Initial Release SCJ	4/02/14

TERMINALS #2 & #3 TO HAVE WIRE EARS ROTATED 90° DURING ASSEMBLY OPERATION.



UNCONTROLLED COPY



TOLERANCES UNLESS OTHERWISE SPECIFIED
 INCHES: .XX - ±.030
 .XXX - ±.015
 ANGLES - ±5°

TOOL NO.
0861



Title: **GROUND BLADE BRIDGE ASSEMBLY-P/C 37000**

DO NOT SCALE DWG.

Drawn By: **S.JOHNSON**

Date: **4/02/14**

ETCO Incorporated
 Engineered Products
 25 Bellows Street
 Warwick, R.I. 02888
 Phone: (401)467-2400
 FAX: (401)467-9230
 www.ETCO.com

Chk'd/App'd By:

Scale:
3X

Size
B

Dwg. No.:

GBBA-5