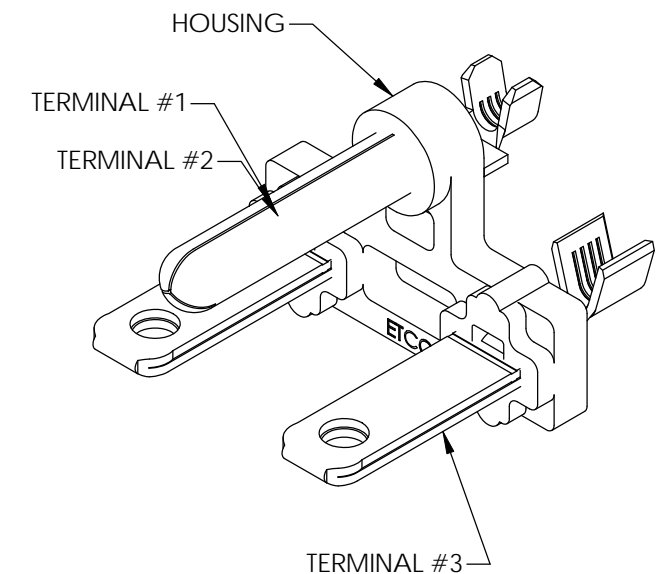
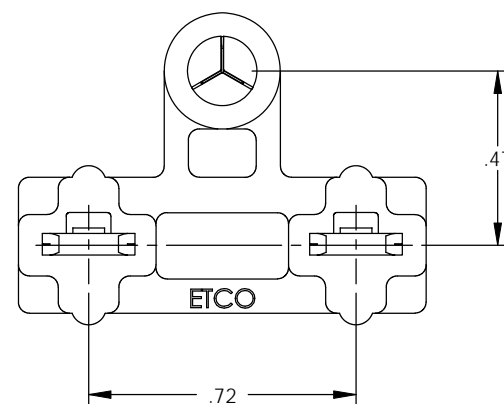
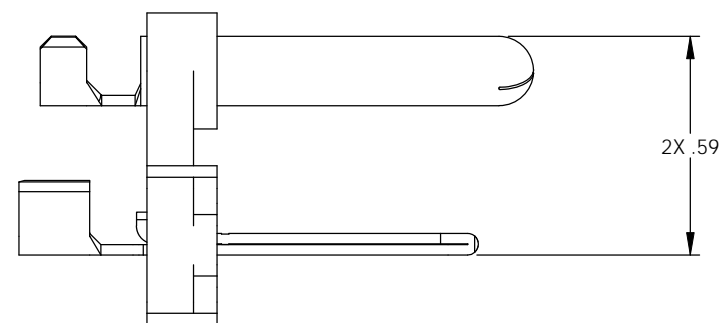
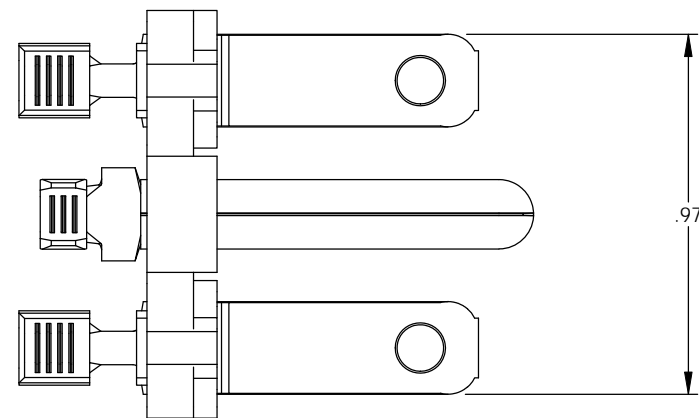


Rev.	Description of Change/ SCN#	Date
1	TRANSFERED FROM CP SCJ	8-26-08

ASSEMBLY ITEM	P/C	DESCRIPTION	MAT'L	PLATING	WIRE RANGE
TERMINAL #1	14219	PN187H5*CRA-HB	BRASS	NONE	12-16 AWG
TERMINAL #2	14018	PPBF8*A-HB	BRASS	NONE	12-16 AWG
TERMINAL #3	14018	PPBF8*A-HB	BRASS	NONE	12-16 AWG
HOUSING	81054	BHBP04	POLYPROPYLENE	N/A	N/A



UNCONTROLLED COPY

<p>THIRD ANGLE PROJECTION TOLERANCES UNLESS OTHERWISE SPECIFIED INCHES: .XX - ±.030 .XXX - ±.015 ANGLES: ±5°</p>	<p>TOOL NO.</p> <p>0861</p>	<p>Title: GROUND BLADE BRIDGE ASSEMBLY-P/C 37025</p>		
		<p>DO NOT SCALE DWG.</p>	<p>Drawn By: S.JOHNSON</p>	<p>Date: 8-26-08</p>
<p>ETCO Incorporated Engineered Products 25 Bellows Street Warwick, RI 02888 Phone: (401) 467-2400 Fax: (401) 467-9230 www.ETCO.com</p>		<p>Chk'd/App'd By:</p>	<p>Scale: 2X</p>	<p>Size B</p>
		<p>Dwg. No.: GBBA-615-2 cust</p>		