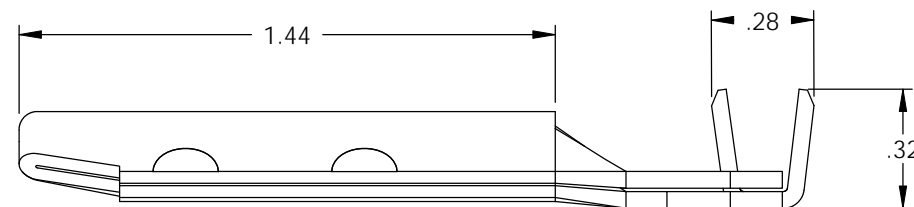
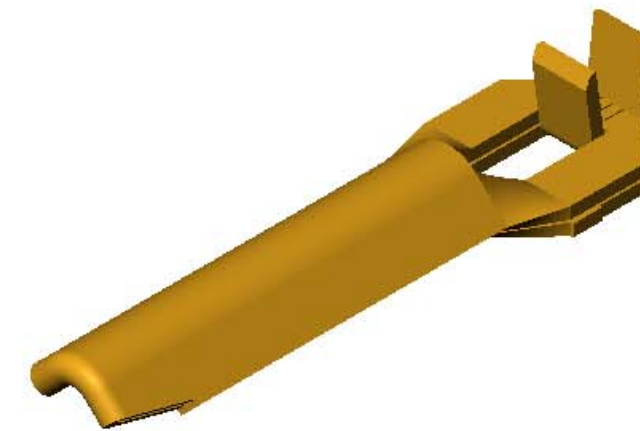
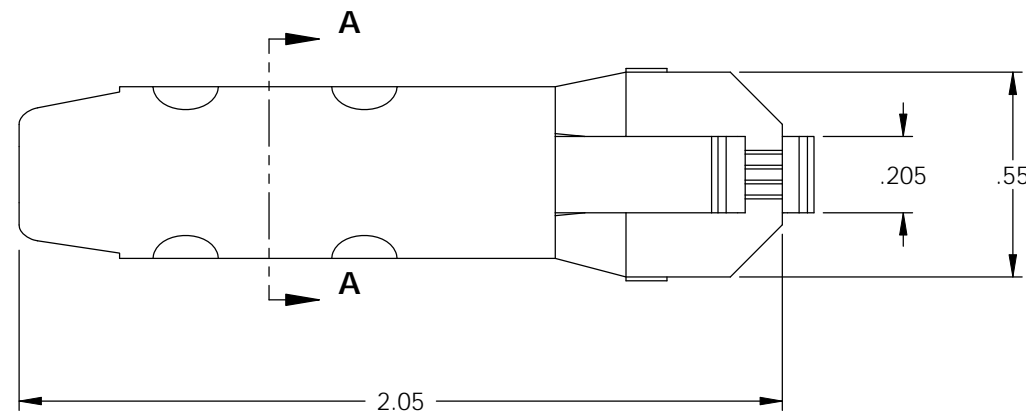
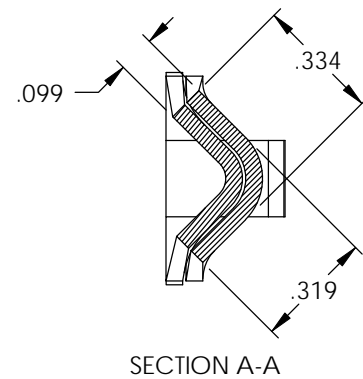


PART CODE	DESCRIPTION	MATERIAL
82001	GBDC-HB	NOTE 1

Rev.	Description of Change/ SCN#	Date
1	TRANSFER FROM CP TO EP	4-29-05

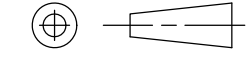



NOTES:

- MATERIAL: .045 THICK C26000 BRASS  
SOFT ANNEALED; PER ETCO METAL CODE 00101.
- WIRE RANGE: #12-#8 AWG.

THIS PRINT IS THE PROPERTY OF ETCO INCORPORATED. NO PART OF THIS DESIGN MAY BE USED IN ANY WAY WITHOUT WRITTEN CONSENT FROM ETCO INCORPORATED.

## UNCONTROLLED COPY

 THIRD ANGLE PROJECTION	TOOL NO.	Title: DRYER CORD GROUND BLADE		
	0868	DO NOT SCALE DWG.	Drawn By: S.JOHNSON	Date: 4-29-05
TOLERANCES UNLESS OTHERWISE SPECIFIED INCHES: .XX - ±.030 .XXX - ±.015 ANGLES - ±5°		ETCO Incorporated Engineered Products 25 Bellows Street Warwick, R.I. 02888 Phone: (401)467-2400 FAX: (401)467-9230 www.ETCO.com		Chk'd/App'd By: Scale: 2X Size B
			Dwg. No.:	GBDC