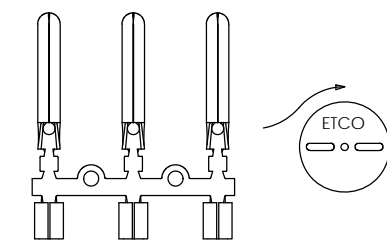
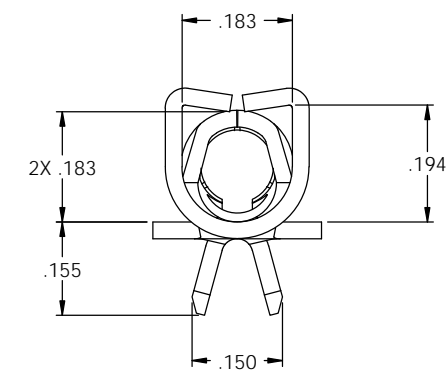
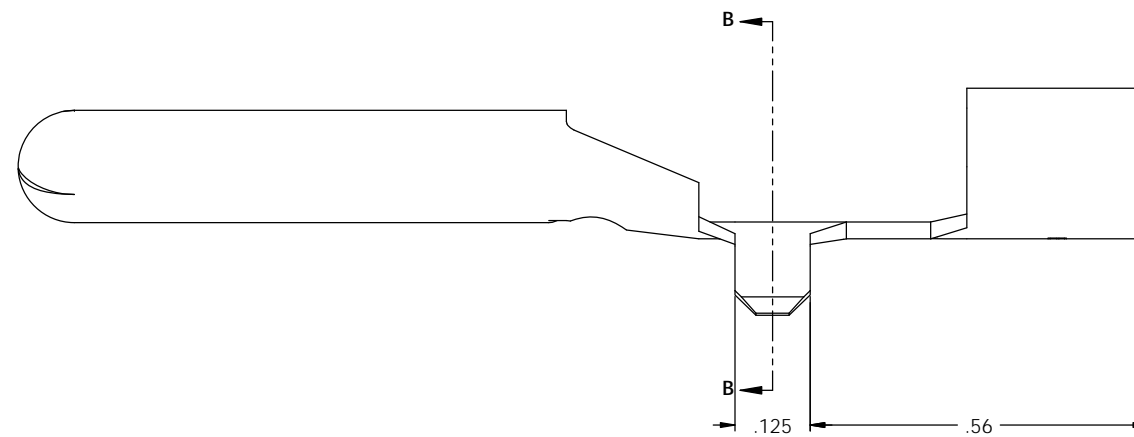
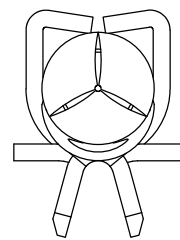
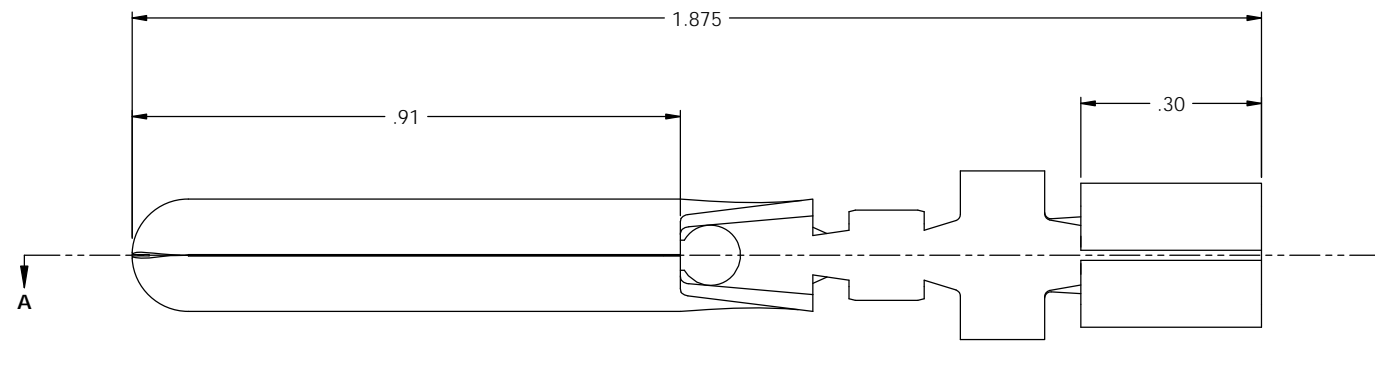
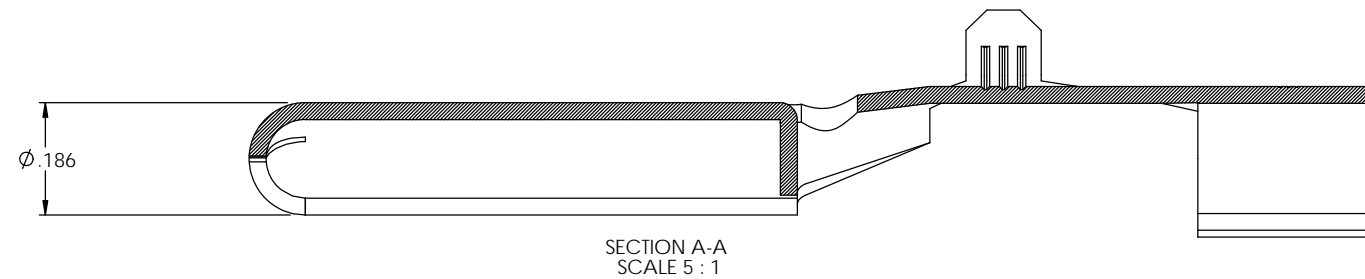


NOTE:

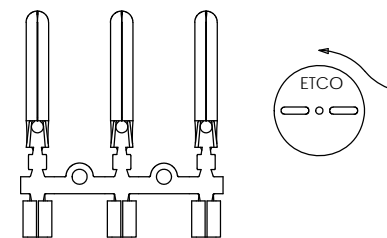
- 1.) .028 THK. BRASS, #2 HARD (HALF HARD), ANNEALED TO TEMPER, PER ETCO METAL CODE NO. 00113.
- 2.) WIRE RANGE: 16-18 AWG

P/C	DESCRIPTION (6)	MAT'L
09267	GCMF-C-A-HB	NOTE 1

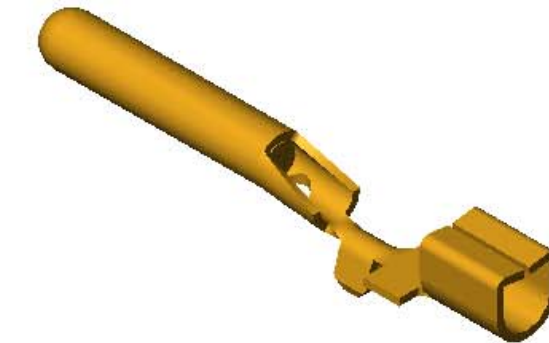
Rev.	Description of Change/ SCN#	Date
1	TRANSFER FROM CP TO EP	10-6-03
2	SCN# 102480 SCJ	3-10-04
3	SCN# 102602 SCJ	5-27-04
4	SCN# 102641 SCJ	7-19-04
5	DIMENSIONS ADDED	6/22/05
6	ECR# 816 SCJ	11-1-11



DIRECTION EXITING TOOL
RECEPTACLE UP, TO THE FRONT



DIRECTION TOWARDS APPLICATOR
RECEPTACLE UP, TO THE FRONT



UNCONTROLLED COPY

 THIRD ANGLE PROJECTION	TOOL NO.	Title: MALE/FEMALE GROUND PIN		
	0875	DO NOT SCALE DWG.	Drawn By: S.JOHNSON	Date: 10-6-03
TOLERANCES UNLESS OTHERWISE SPECIFIED INCHES: XX - ±.030 XXX - ±.015 ANGLES: ±5°	 ETCO	ETCO Incorporated Engineered Products 25 Bellows Street Warwick, RI 02888 Phone: (401) 467-2400 Fax: (401) 467-9230 www.ETCO.com	Chk'd/App'd By:	Scale: 3X Size: C
Dwg. No.: GCMF-C				