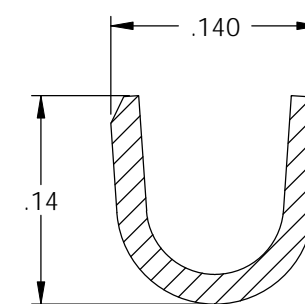
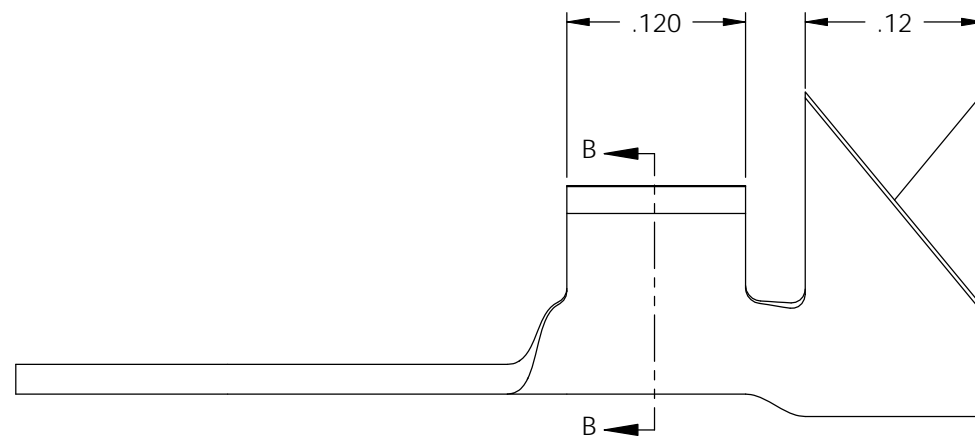
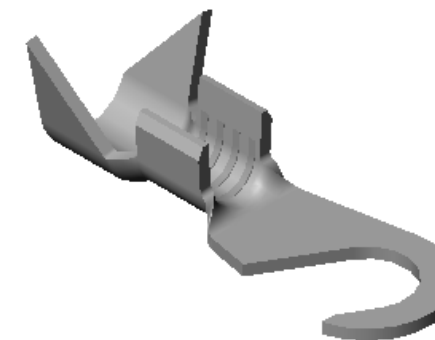
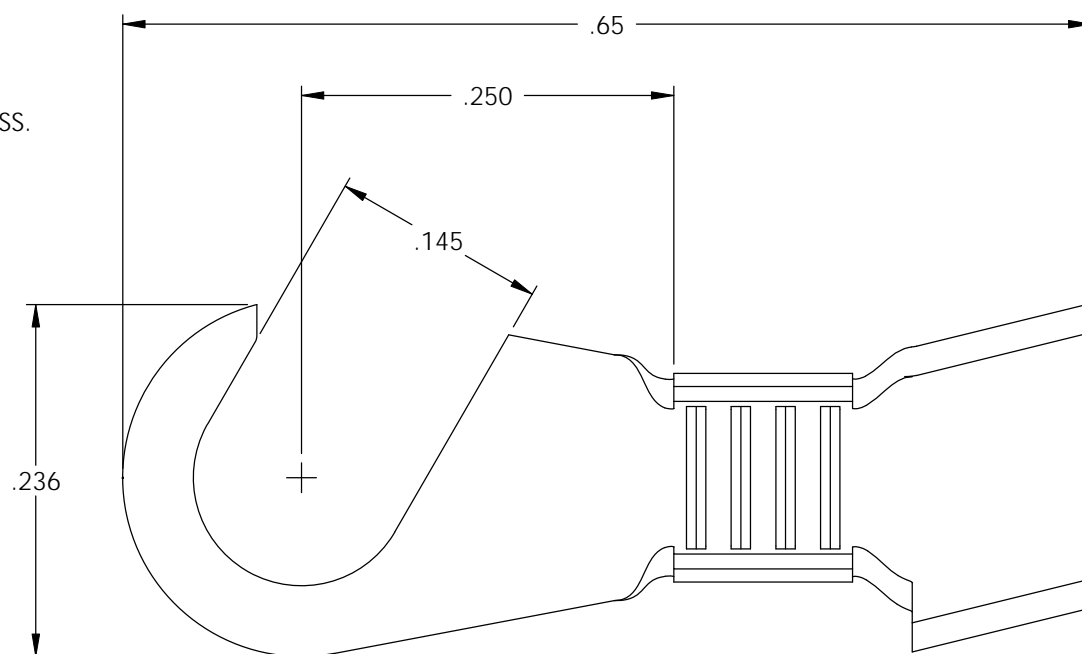


NOTES:

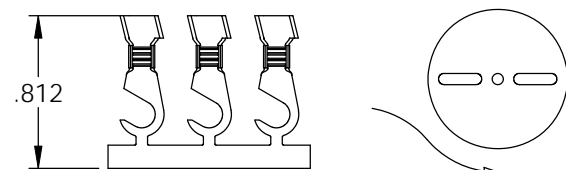
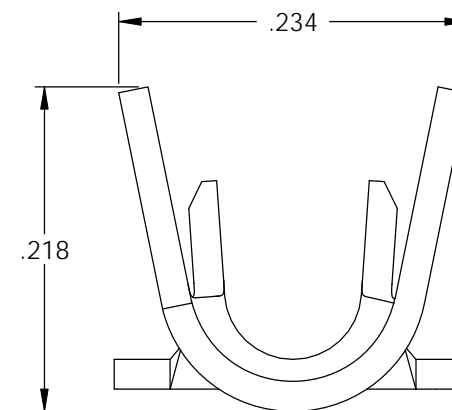
1. MATERIAL: .020 THICK, BRASS, #2 TEMPER (1/2 HARD) PER ETCO METAL CODE 00410.
2. MATERIAL: .020 THICK, PRE-TINNED BRASS, #2 TEMPER (1/2 HARD) PER ETCO METAL CODE 01470.
4. PARTS MAY BE COATED WITH A LIGHT FILM OF LUBRICATION USED IN THE MANUFACTURING PROCESS.
5. WIRE RANGE: 20-16 AWG.
6. INSULATION RANGE:  $\varnothing$ .090-.130

P/C	DESCRIPTION	MAT'L
04725	H186-6-HB	NOTE 1
04728	H186-6-THB	NOTE 2

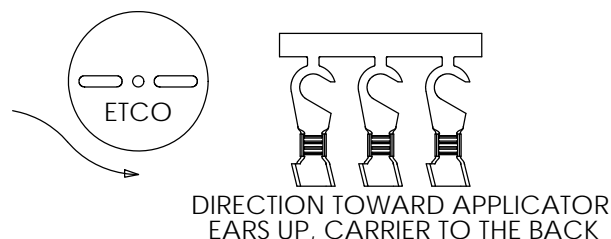
Rev.	Description of Change/ SCN#	Date
1	REDRAWN ON SOLIDWORKS NO CHANGES SCJ ORG.ENG.DWG.DATE: 9-30-75	12-6-07



SECTION B-B  
SCALE 8 : 1



DIRECTION EXITING TOOL,  
EARS UP, CARRIER TO THE FRONT



DIRECTION TOWARD APPLICATOR,  
EARS UP, CARRIER TO THE BACK

THIS PRINT IS THE PROPERTY OF ETCO INCORPORATED. NO PART OF THIS DESIGN MAY BE USED IN ANY WAY WITHOUT WRITTEN CONSENT FROM ETCO INCORPORATED.

# UNCONTROLLED COPY

<p>THIRD ANGLE PROJECTION TOLERANCES UNLESS OTHERWISE SPECIFIED INCHES: .XX - <math>\pm</math>.030 .XXX - <math>\pm</math>.015 ANGLES: <math>\pm</math>5°</p>	<p>TOOL NO. <b>0072</b></p>	<p>Title: <b>HOOK TERMINAL</b></p>		
		<p>DO NOT SCALE DWG.</p>	<p>Drawn By: <b>S.JOHNSON</b></p>	<p>Date: <b>12-6-07</b></p>
<p>ETCO Incorporated Engineered Products 25 Bellows Street Warwick, RI 02888 Phone: (401) 467-2400 Fax: (401) 467-9230 www.ETCO.com</p>		<p>Chk'd/App'd By:</p>	<p>Scale: <b>10X</b></p>	<p>Size <b>B</b></p>
		<p>Dwg. No.: <b>H186 cust</b></p>		