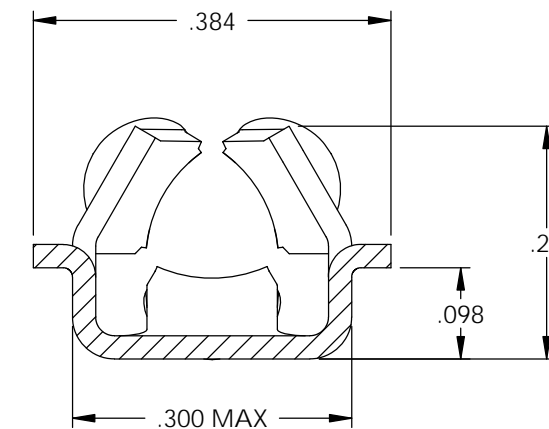
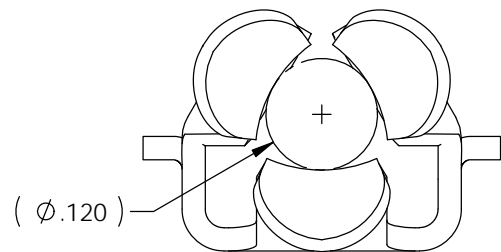
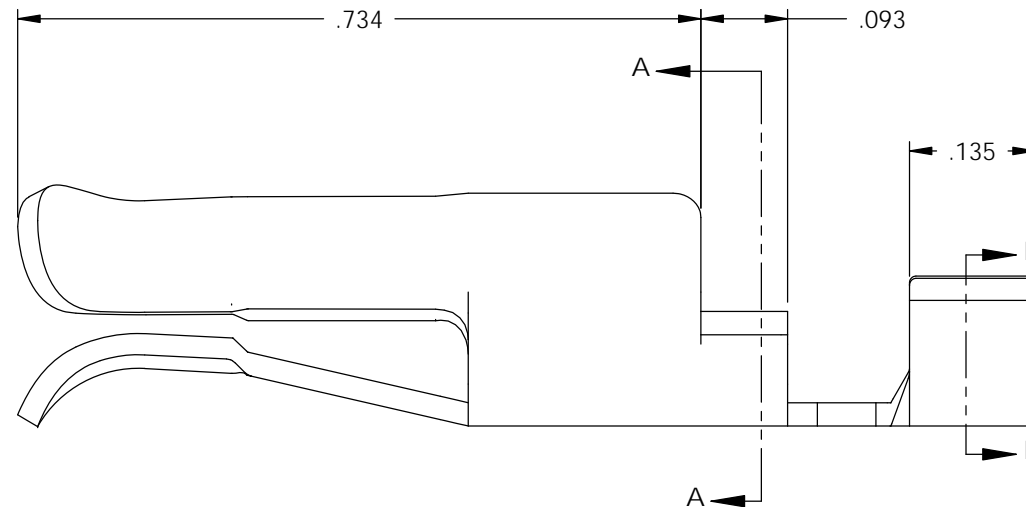
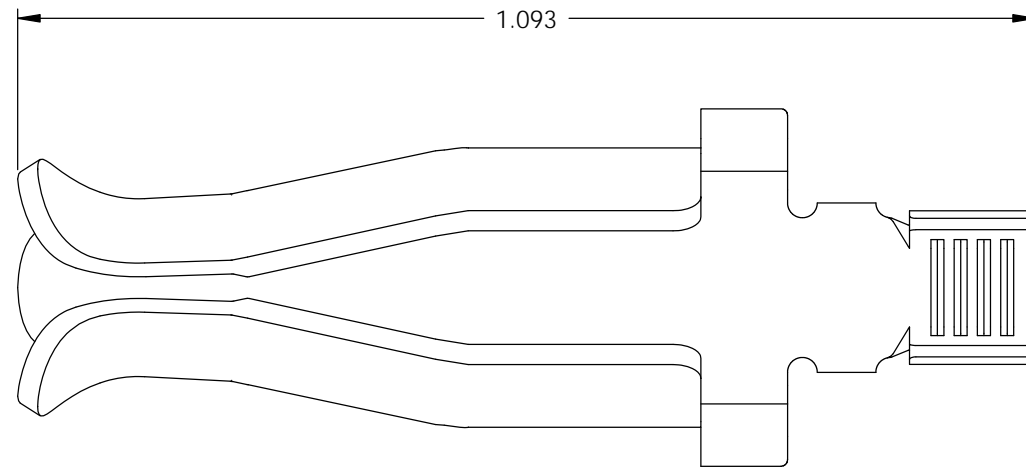
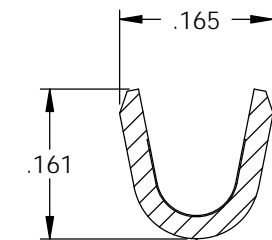


NOTES:

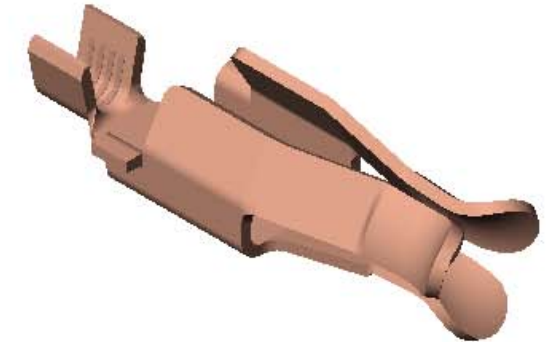
- MAT'L: .025 THICK, BEARING BRONZE, #4 TEMPER (FULL HARD) PER ETCO METAL CODE 03380.
- MAT'L: .025 THICK, BEARING BRONZE, #4 TEMPER (FULL HARD) POST-ELECTRO NICKEL PLATE, .000075 MIN THK, MATTE FINISH.
- MAT'L: .025 THICK, COPPER COATED STEEL, #2 TEMPER (1/2 HARD) PER ETCO METAL CODE 02820.
- WIRE RANGE: 14-18 AWG.



SECTION A-A
SCALE 5 : 1

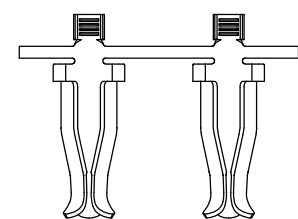


SECTION B-B
SCALE 5 : 1

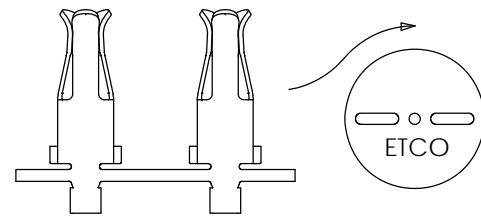


P/C	DESCRIPTION	MAT'L	RE-REELING
09620	HCRS-187-BB	NOTE 1	NO
09621	HCRS-187-BB-NPAF	NOTE 2	YES
09630	HCRS-187-CCS	NOTE 3	NO

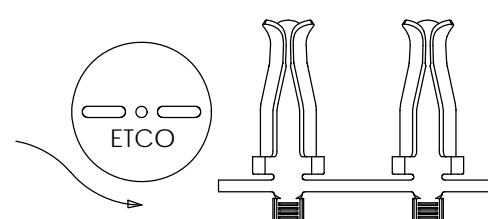
Rev.	Description of Change/ SCN#	Date
1	REDRAWN ON SOLIDWORKS NO CHANGES SCJ ORG.ENG.DWG.DATE: 6-30-76	3-14-08
2	ECR# 849 SCJ	9-27-11



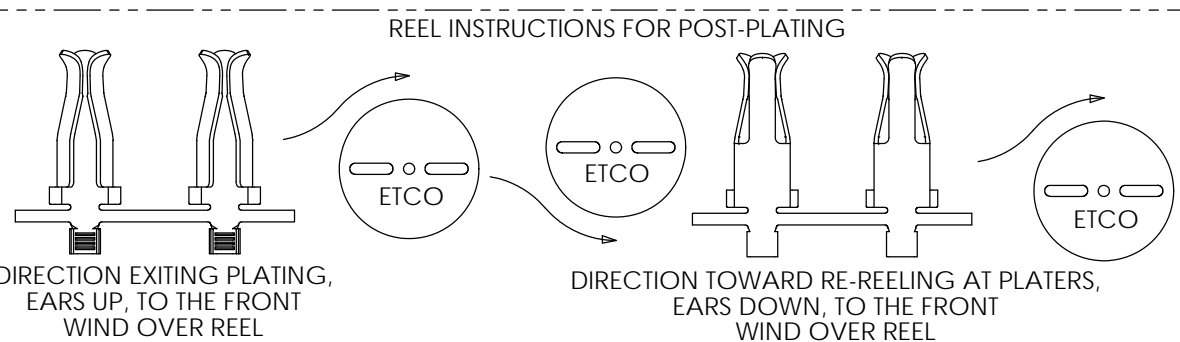
DIRECTION EXITING TOOL,
EARS UP, TO THE BACK



② TWIST PARTS 180°,
EARS DOWN, TO THE FRONT,
WIND OVER REEL



DIRECTION TOWARD APPLICATOR
(OR PLATING, IF NECESSARY)
EARS UP, TO THE FRONT,
ALL PARTS ON TOOL



DIRECTION EXITING PLATING,
EARS UP, TO THE FRONT
WIND OVER REEL

DIRECTION TOWARD RE-REELING AT PLATERS,
EARS DOWN, TO THE FRONT
WIND OVER REEL

THIS PRINT IS THE PROPERTY OF ETCO INCORPORATED. NO PART OF THIS DESIGN MAY BE USED IN ANY WAY WITHOUT WRITTEN CONSENT FROM ETCO INCORPORATED.

UNCONTROLLED COPY

<p>THIRD ANGLE PROJECTION TOLERANCES UNLESS OTHERWISE SPECIFIED INCHES: .XX - ±.030 .XXX - ±.015 ANGLES: ±5°</p>	<p>TOOL NO. 0207</p>	<p>Title: RECEPTACLE, HEATER CORD CONNECTOR</p>		
		<p>DO NOT SCALE DWG.</p>	<p>Drawn By: S.JOHNSON</p>	<p>Date: 3-14-08</p>
<p>ETCO Incorporated Engineered Products 25 Bellows Street Warwick, RI 02888 Phone: (401) 467-2400 Fax: (401) 467-9230 www.ETCO.com</p>		<p>Chk'd/App'd By:</p>	<p>Scale: 5X</p>	<p>Size B</p>
		<p>Dwg. No.: HCRS-187 cust</p>		