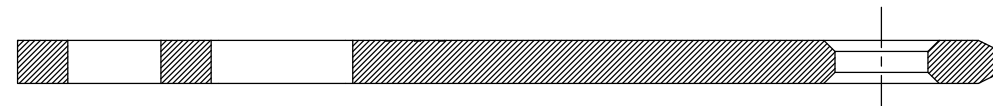
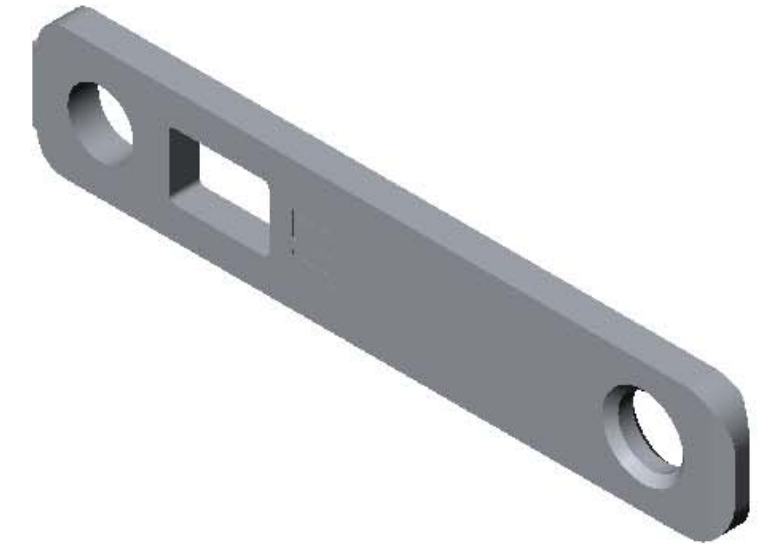
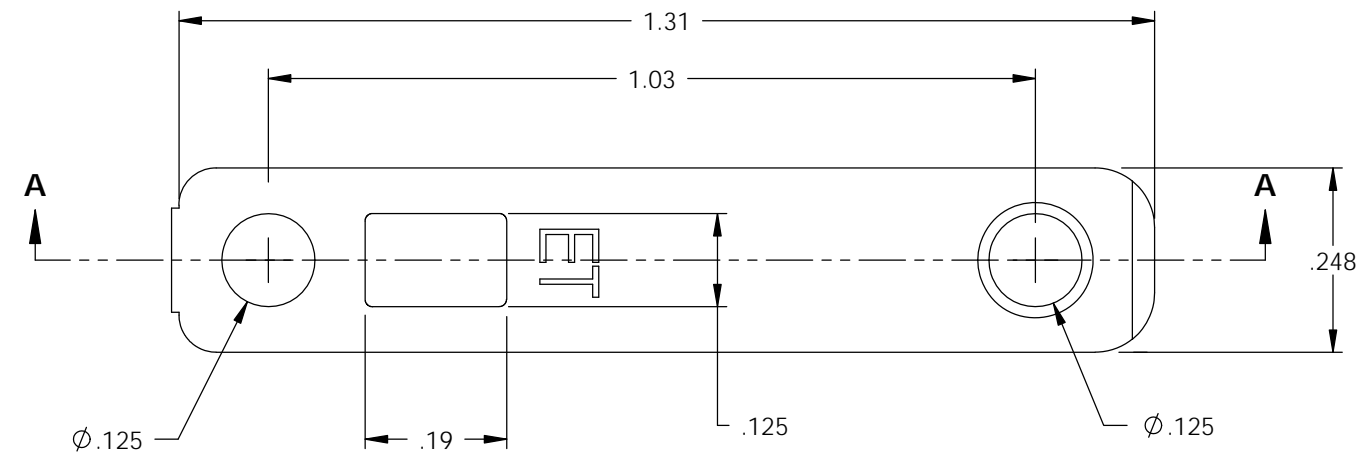


NOTES:

1. MATERIAL: .058 THICK C26000 BRASS, 1/2 HARD (3)
ANNEALED TO TEMPER,
PER ETCO METAL CODE 00951.
2. POST PLATING: .0001-.0003 BRIGHT NICKEL.
3. PARTS MAY BE COATED WITH A LIGHT FILM OF LUBRICATION
USED IN THE MANUFACTURING PROCESS.

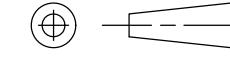

P/C	DESCRIPTION	MAT'L	POST PLATING
14073	HSPB1-HB	NOTE 1	NONE
14077	HSPB1-HB-NPAF	NOTE 1	NOTE 2

Rev.	Description of Change/ SCN#	Date
1	TRANSFER FROM CP TO EP	9-29-03
2	SCN# 102609 SCJ	6-4-04
3	ECR# 1957 SCJ	1/29/13



SECTION A-A

UNCONTROLLED COPY

 THIRD ANGLE PROJECTION TOLERANCES UNLESS OTHERWISE SPECIFIED INCHES: .XX - ±.030 .XXX - ±.015 ANGLES - ±5°	TOOL NO. 0820	Title: HOSPITAL BLADE		
	 ETCO	DO NOT SCALE DWG.	Drawn By: S.JOHNSON	Date: 9-29-03
ETCO Incorporated Engineered Products 25 Bellows Street Warwick, R.I. 02888 Phone: (401)467-2400 FAX: (401)467-9230 www.ETCO.com		Chk'd/App'd By:	Scale: 4X	Size B
Dwg. No.:			HSPB1 cust	