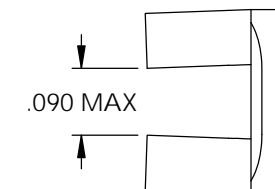
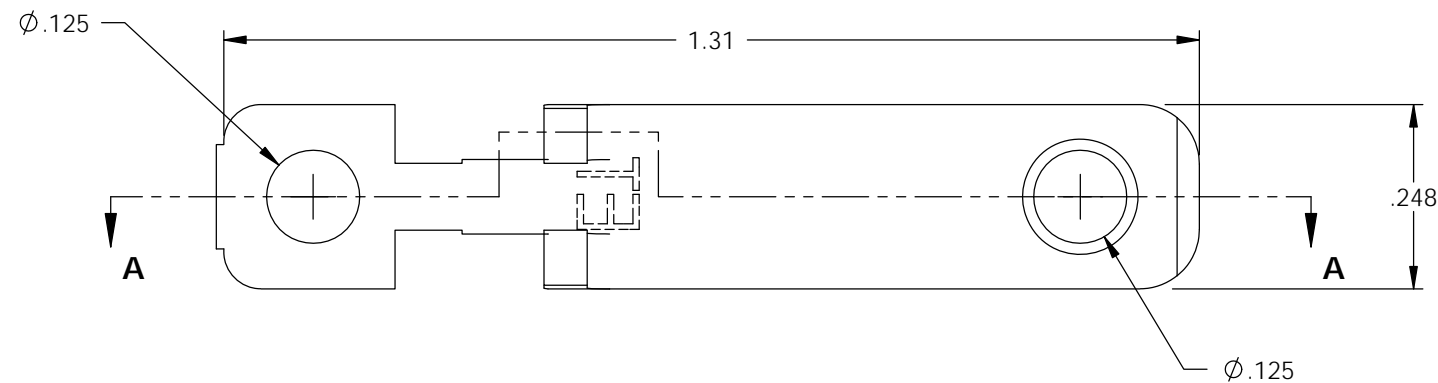
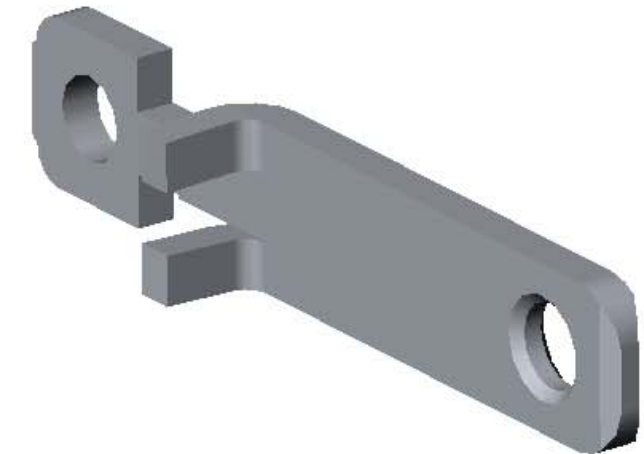
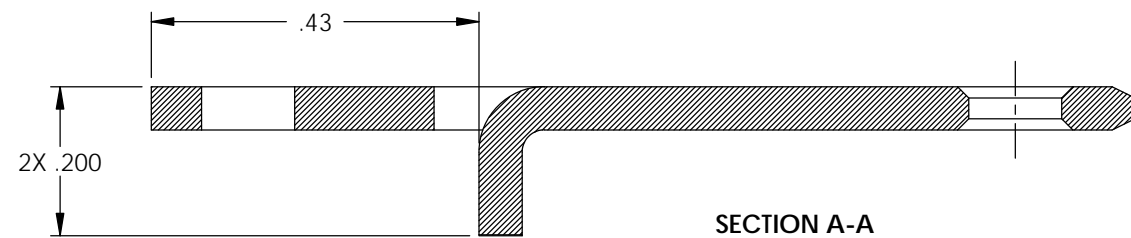


NOTES:

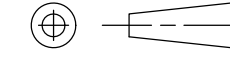

1. MATERIAL: .058 THICK C26000 BRASS, 1/2 HARD, (3)  
ANNEALED TO TEMPER,  
PER ETCO METAL CODE 00951.
2. POST PLATING: .0001-.0003 BRIGHT NICKEL.
3. PARTS MAY BE COATED WITH A LIGHT FILM OF LUBRICATION  
USED IN THE MANUFACTURING PROCESS.

P/C	DESCRIPTION	MAT'L	POST PLATING
14027	HSPB2-HB	NOTE 1	NONE
14072	HSPB2-HB-NPAF	NOTE 1	NOTE 2

Rev.	Description of Change/ SCN#	Date
1	TRANSFER FROM CP TO EP	9-29-03
2	SCN# 102609 SCJ	6-4-04
3	ECR# 1957 SCJ	1/29/13



## UNCONTROLLED COPY

 THIRD ANGLE PROJECTION  TOLERANCES UNLESS OTHERWISE SPECIFIED INCHES: .XX - ±.030 .XXX - ±.015 ANGLES - ±5°	TOOL NO. <b>0820</b>	Title: <b>HOSPITAL BLADE</b>		
	 <b>ETCO</b>	DO NOT SCALE DWG.	Drawn By: S.JOHNSON	Date: 9-29-03
ETCO Incorporated Engineered Products 25 Bellows Street Warwick, R.I. 02888 Phone: (401)467-2400 FAX: (401)467-9230 www.ETCO.com		Chk'd/App'd By:	Scale: 4X	Size B
		Dwg. No.:	<b>HSPB2 cust</b>	