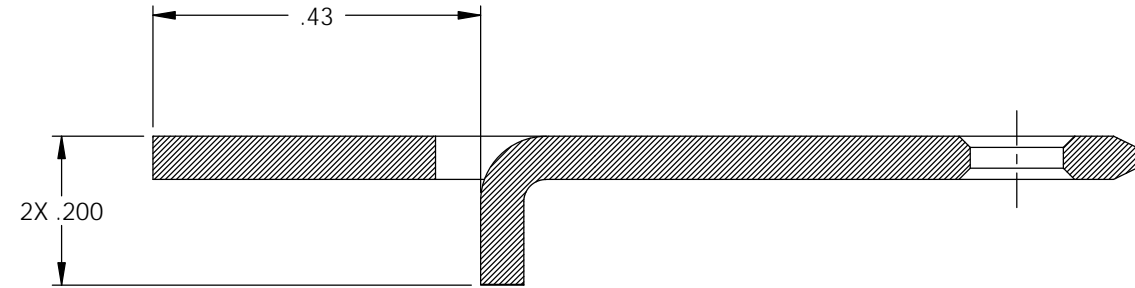


NOTES:

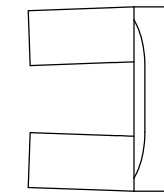
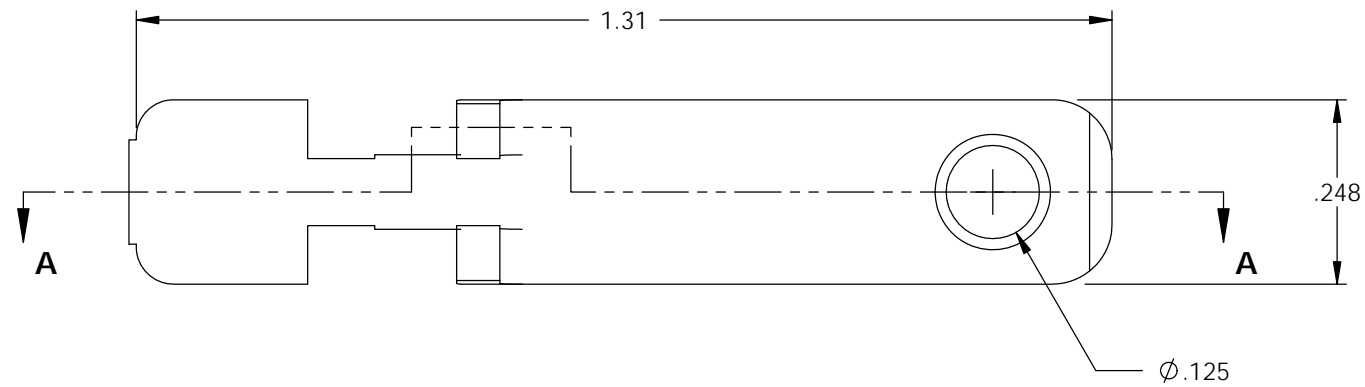
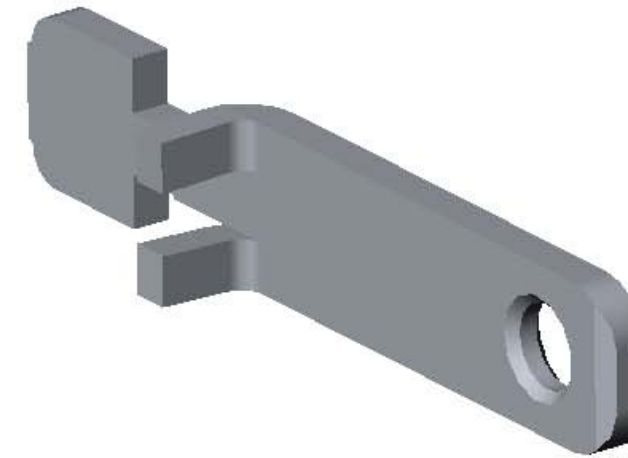
- MATERIAL: .058 THICK C26000 BRASS, 1/2 HARD, (2)
ANNEALED TO TEMPER,
PER ETCO METAL CODE 00951.
- POST PLATING: .0001-.0003 BRIGHT NICKEL.
- PARTS MAY BE COATED WITH A LIGHT FILM OF LUBRICATION
USED IN THE MANUFACTURING PROCESS.

P/C	DESCRIPTION	MAT'L	POST PLATING
14146	HSPB3-HB	NOTE 1	NONE
14398	HSPB3-HB-NPAF	NOTE 1	NOTE 2



Rev.	Description of Change/ SCN#	Date
1	TRANSFERED FROM CP SCJ	8-7-08
2	ECR# 1957 SCJ	1/29/13



SECTION A-A



UNCONTROLLED COPY

 THIRD ANGLE PROJECTION TOLERANCES UNLESS OTHERWISE SPECIFIED INCHES: .XX - ±.030 .XXX - ±.015 ANGLES: ±5°	TOOL NO. 0820	Title: HOSPITAL BLADE		
		DO NOT SCALE DWG.	Drawn By: S.JOHNSON	Date: 8-7-08
ETCO Incorporated Engineered Products 25 Bellows Street Warwick, RI 02888 Phone: (401) 467-2400 Fax: (401) 467-9230 www.ETCO.com		Chk'd/App'd By:	Scale: 4X	Size B
		Dwg. No.: HSPB3 cust		