
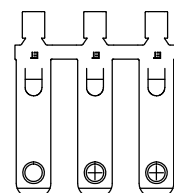
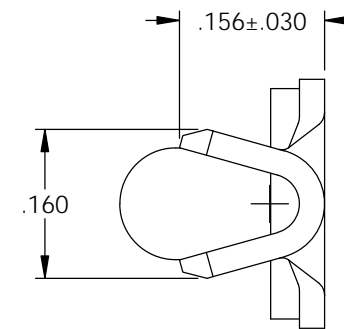
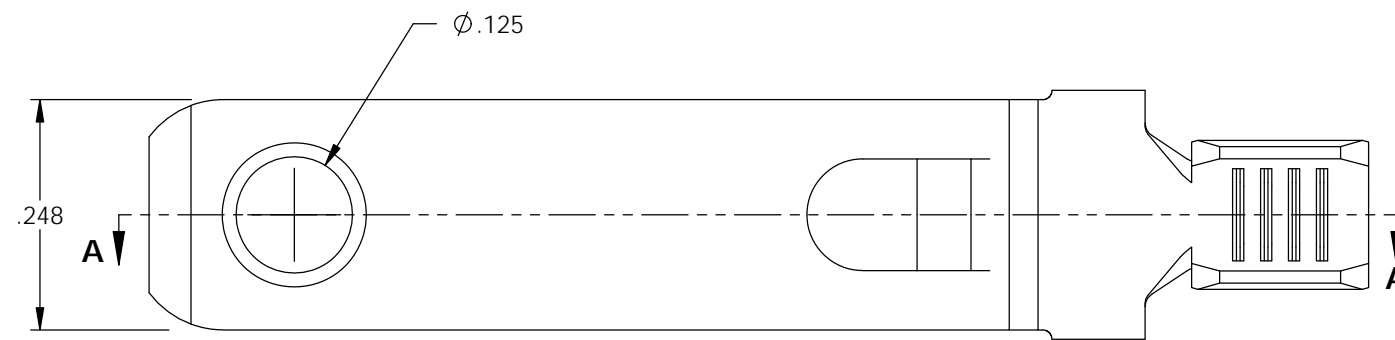
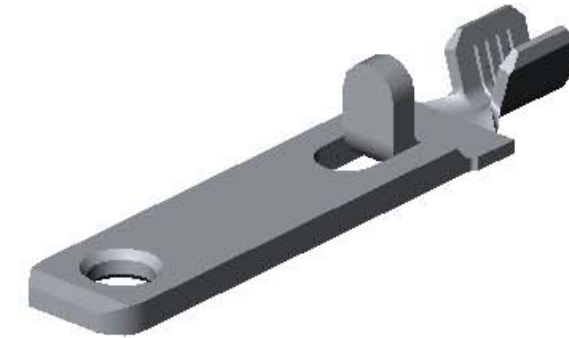
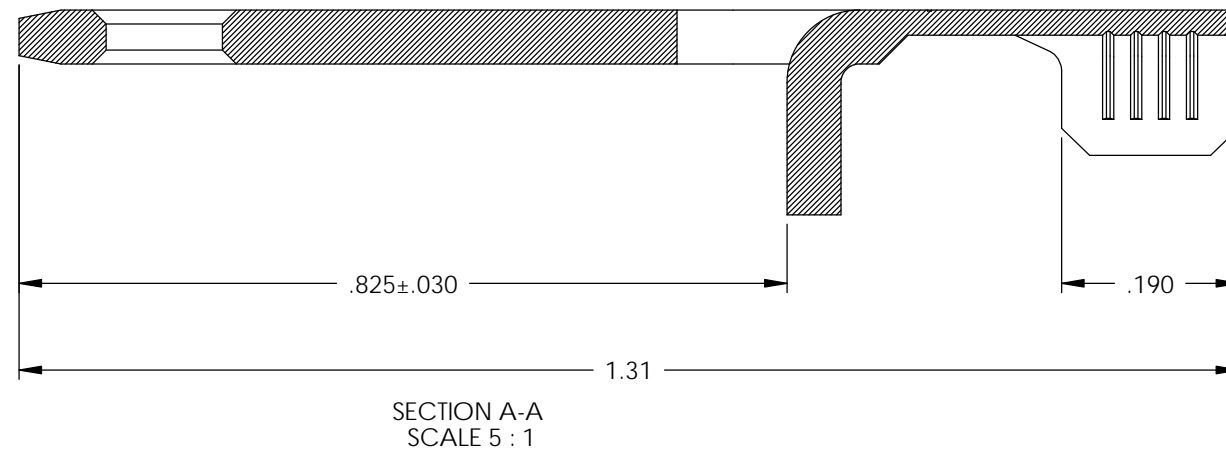


NOTES:

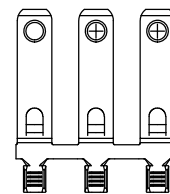
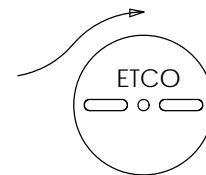
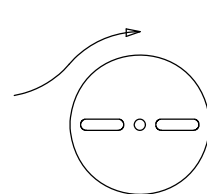
1. MATERIAL: .058/.027 THICK C26000 BRASS, 1/2 HARD, (4)
ANNEALED TO TEMPER,
PER ETCO METAL CODE 07047
2. MATERIAL: .058/.027 THICK C26000 PRE-TINNED BRASS, 1/2 HARD,
PER ETCO METAL CODE 07049
3. PARTS MAY BE COATED WITH A LIGHT FILM OF LUBRICATION
USED IN THE MANUFACTURING PROCESS.
4. WIRE RANGE: #14-#18 AWG.

PART CODE	DESCRIPTION (3)	MATERIAL	
14243	HSPBC-D-HB	NOTE 1	X

Rev.	Description of Change/ SCN#	Date
1	TRANSFER FROM CP TO EP	11-1-04
2	SCN-140500 JMR	8-13-09
3	ECR# 816 SCJ	11-3-11
4	ECR# 1957 SCJ	1/29/13



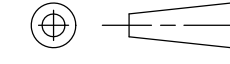

DIRECTION EXITING TOOL
EARS DOWN, TO THE BACK



DIRECTION TOWARDS APPLICATOR
EARS UP, TO THE FRONT

THIS PRINT IS THE PROPERTY OF ETCO INCORPORATED. NO PART OF THIS DESIGN MAY BE USED IN ANY WAY WITHOUT WRITTEN CONSENT FROM ETCO INCORPORATED.

UNCONTROLLED COPY

 THIRD ANGLE PROJECTION TOLERANCES UNLESS OTHERWISE SPECIFIED INCHES: .XX - ±.030 .XXX - ±.015 ANGLES - ±5°	TOOL NO. 0827	Title: HOSPITAL GRADE BLADE		
		DO NOT SCALE DWG.		Drawn By: S.JOHNSON
		ETCO Incorporated Engineered Products 25 Bellows Street Warwick, R.I. 02888 Phone: (401)467-2400 FAX: (401)467-9230 www.ETCO.com		Chk'd/App'd By: _____ Scale: 5X Size B
Dwg. No.: _____			<h1>HSPBC</h1>	