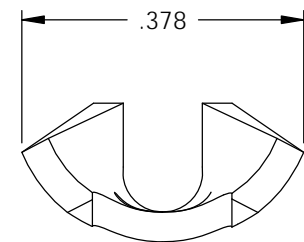
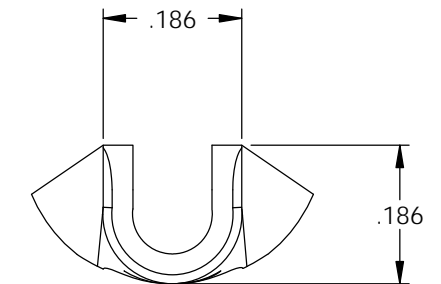
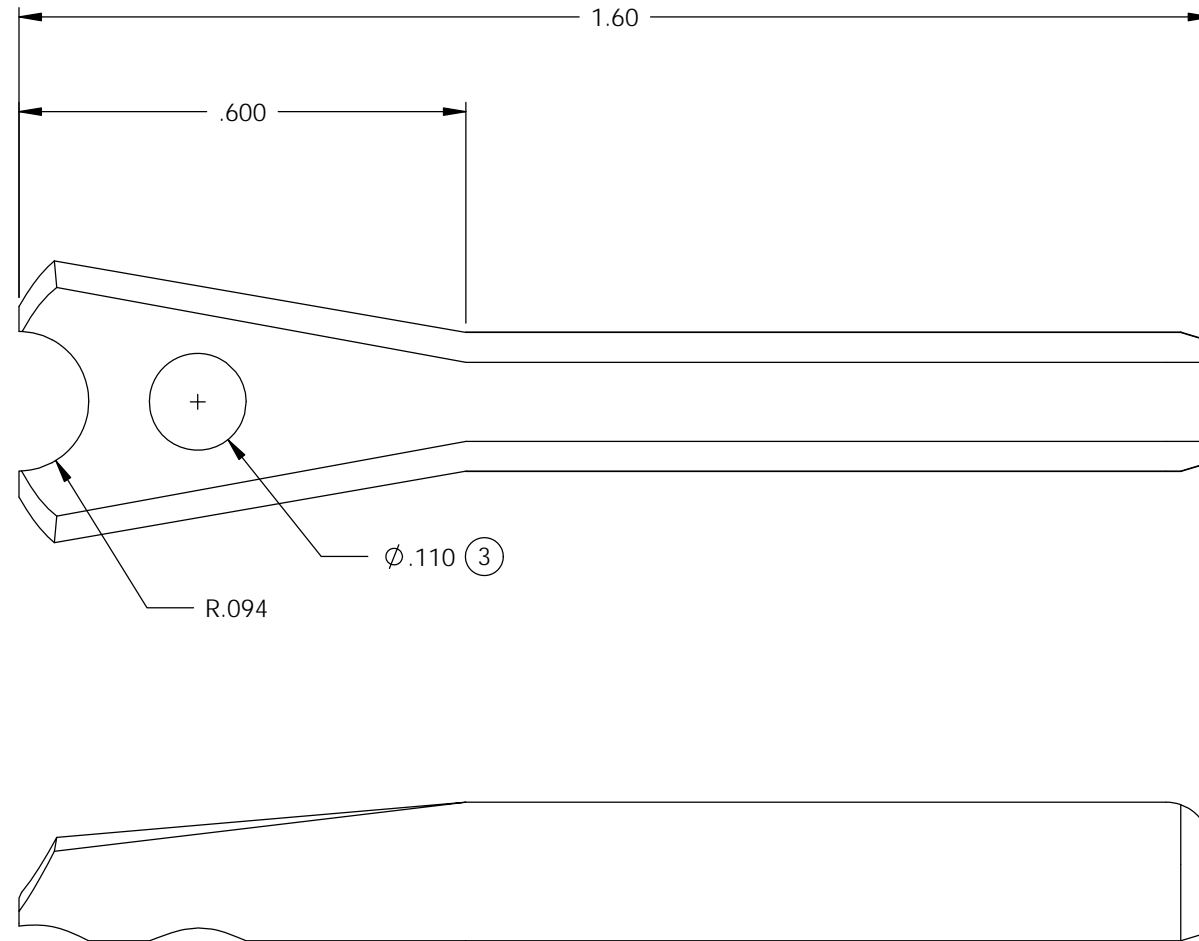


NOTE:

- 1.) MAT'L: .040 THK. BRASS,
#2 TEMPER (HALF HARD), ANNEALED TO TEMPER,
PER ETCO METAL CODE NO. 00764.
- 2.) POST PLATE: BRIGHT NICKEL PLATE .00030 MAX. THK.
- 3.) PARTS MAY BE COATED WITH A LIGHT
FILM OF LUBRICATION USED IN THE
MANUFACTURING PROCESS.
- 4.) PART PRODUCED IN LOOSE PIECE FORM.

P/C	DESCRIPTION	MAT'L	PLATING
14074	HSP1-HB	NOTE 1	NONE
14078	HSP1-HB-NPAF	NOTE 1	NOTE 2

Rev.	Description of Change/ SCN#	Date
1	TRANSFERED FROM CP TO EP	9-29-03
2	SCN# 102997 SCJ	6-15-05
3	ECR# 1386 SCJ	5/9/12



UNCONTROLLED COPY

<p>THIRD ANGLE PROJECTION TOLERANCES UNLESS OTHERWISE SPECIFIED INCHES: .XX - ±.030 .XXX - ±.015 ANGLES: ±5°</p>	<p>TOOL NO. 0826</p>	<p>Title: HOSPITAL GRADE PIN</p>			
		<p>ETCO Incorporated Engineered Products 25 Bellows Street Warwick, RI 02888 Phone: (401) 467-2400 Fax: (401) 467-9230 www.ETCO.com</p>	<p>DO NOT SCALE DWG.</p>	<p>Drawn By: S.JOHNSON</p>	<p>Date: 9-29-03</p>
		<p>Chk'd/App'd By:</p>	<p>Scale: 4X</p>	<p>Size B</p>	<p>Dwg. No.: HSP1 cust</p>