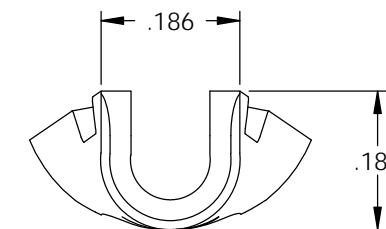
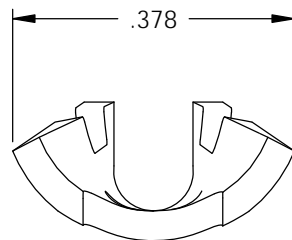
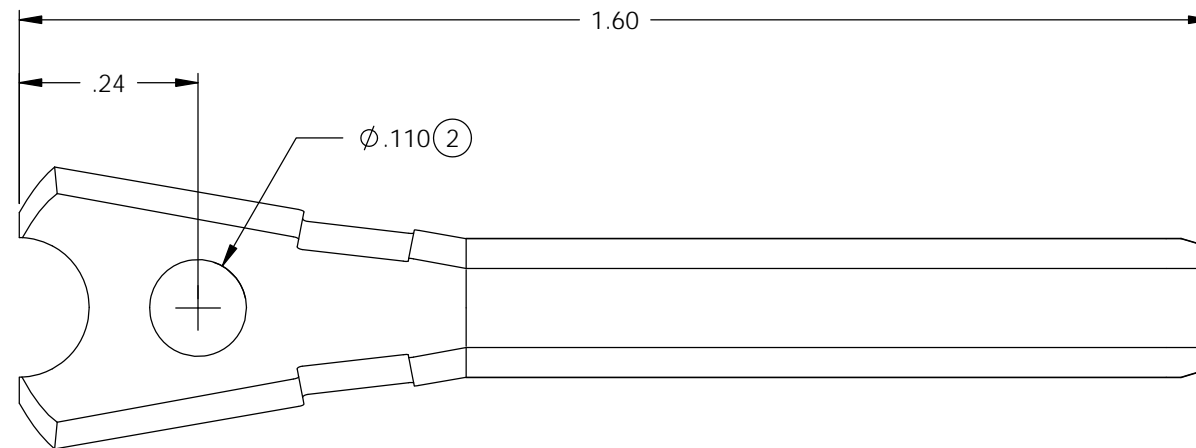
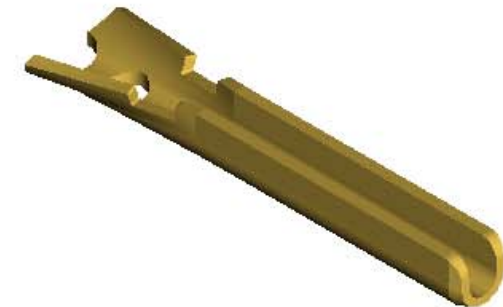


NOTE:



- 1.) MAT'L: .040 THK. BRASS, #2 TEMPER (HALF HARD), ANNEALED TO TEMPER, PER ETCO METAL CODE NO. 00764.
- 2.) POST PLATE: BRIGHT NICKEL PLATE .00030 MAX. THK. AT LOCATION INDICATED, FULL COVERAGE REQUIRED ON ENTIRE PART.
- 3.) PARTS MAY BE COATED WITH A LIGHT FILM OF LUBRICATION USED IN THE MANUFACTURING PROCESS.
- 4.) PART PRODUCED IN LOOSE PIECE FORM.

P/C	DESCRIPTION	MAT'L	POST-PLATING
14144	HSP2-HB	NOTE 1	NONE
14397	HSP2-HB-NPAF	NOTE 1	NOTE 2

Rev.	Description of Change/ SCN#	Date
1	TRANSFERED FROM CP SCJ	8-7-08
2	ECR# 1386 SCJ	5/9/12



UNCONTROLLED COPY

 THIRD ANGLE PROJECTION TOLERANCES UNLESS OTHERWISE SPECIFIED INCHES: .XX - ±.030 .XXX - ±.015 ANGLES: ±5°	TOOL NO. 0826	Title: HOSPITAL GRADE PIN		
	 ETCO	DO NOT SCALE DWG.	Drawn By: S.JOHNSON	Date: 8-7-08
ETCO Incorporated Engineered Products 25 Bellows Street Warwick, RI 02888 Phone: (401) 467-2400 Fax: (401) 467-9230 www.ETCO.com		Chk'd/App'd By:	Scale: 4X	Size B
			Dwg. No.: HSP22 cust	