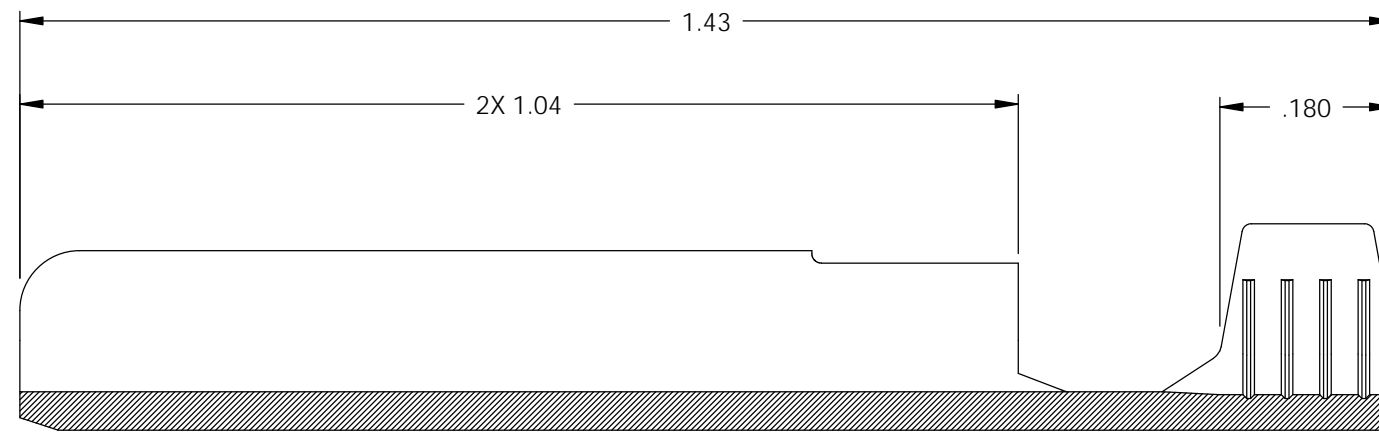
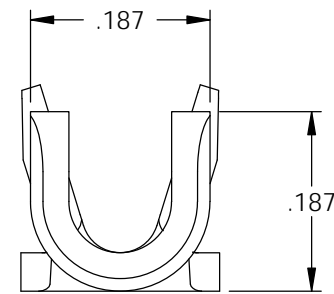
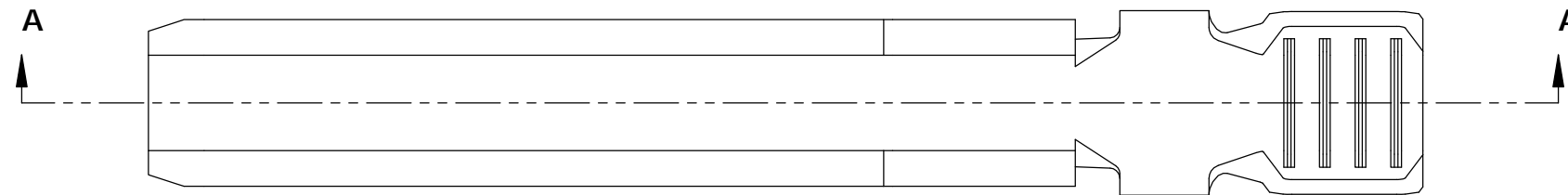
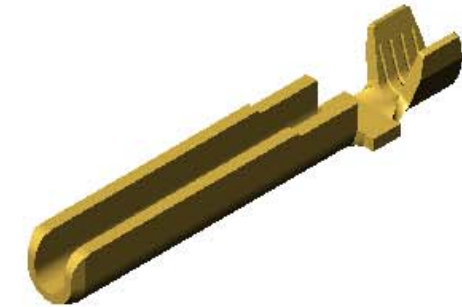


NOTES:

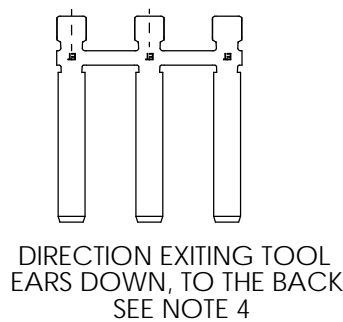
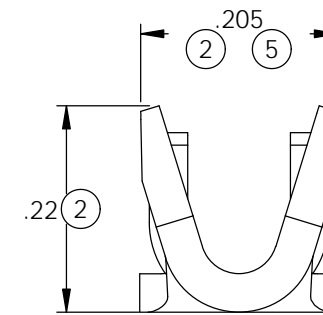
1. MATERIAL: .040 THICK C26000 BRASS, 1/2 HARD
PER ETCO METAL CODE 00763
2. MATERIAL: .040 THICK C26000 PRE-TINNED BRASS, 1/2 HARD
PER ETCO METAL CODE 01779
3. PARTS MAY BE COATED WITH A LIGHT FILM OF LUBRICATION
USED IN THE MANUFACTURING PROCESS.
4. FOR WINDING AND REWINDING INSTRUCTIONS SEE PR-3-07.
5. WIRE RANGE: #14-#18 AWG.

P/C	DESCRIPTION (3)	MAT'L	REWIND
14244	HSPPC-D-HB	NOTE 1	NO
14266	HSPPC-D-THB	NOTE 2	NO
14362	HSPPC-DRC-THB	NOTE 2	YES

Rev.	Description of Change/ SCN#	Date
1	TRANSFERED FROM CP SCJ	8-7-08
2	SCN-140499 JMR	7-29-09
3	ECR# 816 SCJ	11-3-11
4	ECR# 2692 SCJ	12/11/13
5	ECR# 3528 SCJ	1/22/15



SECTION A-A



UNCONTROLLED COPY

<p>THIRD ANGLE PROJECTION TOLERANCES UNLESS OTHERWISE SPECIFIED INCHES: .XX - ±.030 .XXX - ±.015 ANGLES: ±5°</p>	<p>TOOL NO. 0828</p>	<p>Title: HOSPITAL GRADE PIN</p>		
		<p>DO NOT SCALE DWG.</p>	<p>Drawn By: S.JOHNSON</p>	<p>Date: 8-7-08</p>
<p>ETCO Incorporated Engineered Products 25 Bellows Street Warwick, RI 02888 Phone: (401) 467-2400 Fax: (401) 467-9230 www.ETCO.com</p>		<p>Chk'd/App'd By:</p>	<p>Scale: 5X</p>	<p>Size B</p>
		<p>Dwg. No.: HSPPC cust</p>		