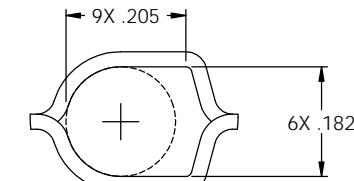
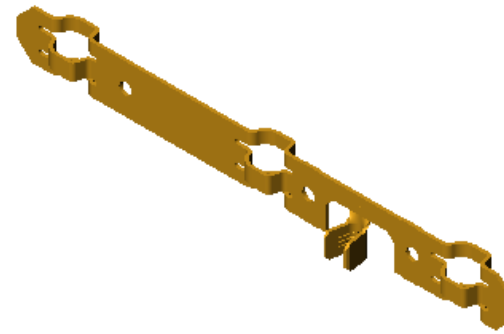


NOTES:

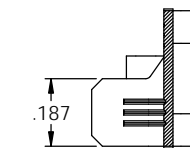
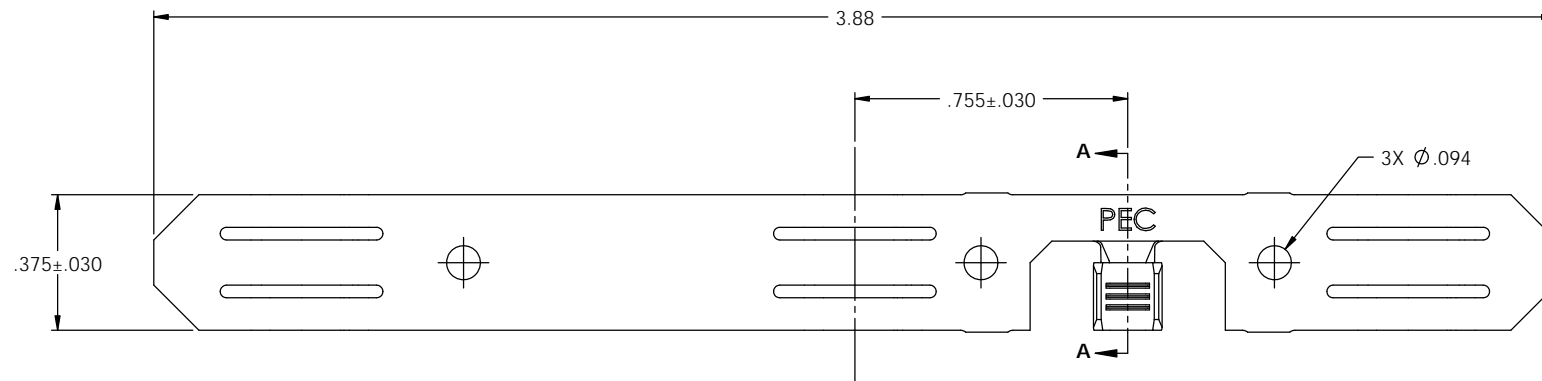
1. MATERIAL: .025 THICK C26000 BRASS; 3/4 HARD
PER ETCO METAL CODE 00566.
2. WIRE RANGE: #14-#10 AWG.
3. PARTS MAY BE COATED WITH A LIGHT FILM OF LUBRICATION
USED IN THE MANUFACTURING PROCESS.

PART CODE	DESCRIPTION (2)	MATERIAL
14161	LGC-1-D-HB	NOTE 1

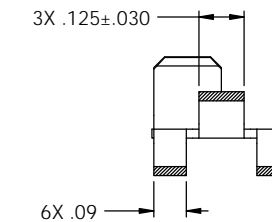
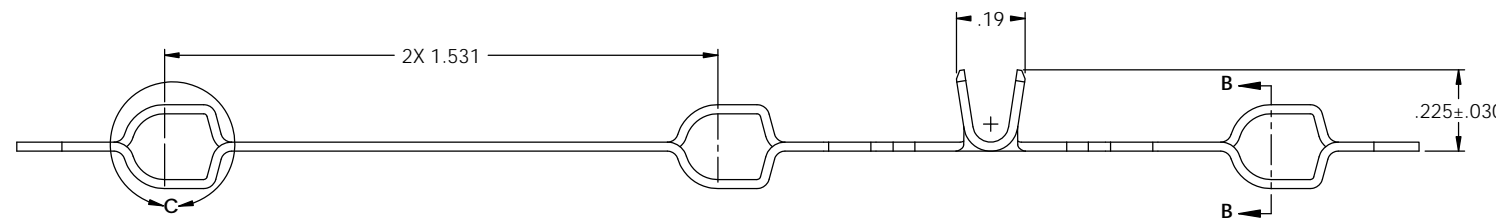
Rev.	Description of Change/ SCN#	Date
1	TRANSFER FROM CP TO EP	1-3-04
2	ECR# 816 SCJ	11-3-11



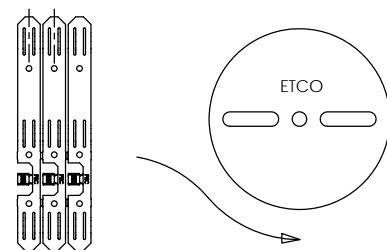
DETAIL C
SCALE 5 : 1



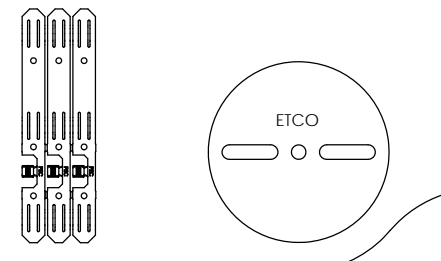
SECTION A-A
SCALE 3 : 1



SECTION B-B
SCALE 3 : 1



DIRECTION EXITING TOOL
EARS UP, TO THE LEFT



DIRECTION TOWARDS APPLICATOR
EARS UP, TO THE LEFT

THIS PRINT IS THE PROPERTY OF ETCO INCORPORATED. NO PART OF THIS DESIGN MAY BE USED IN ANY WAY WITHOUT WRITTEN CONSENT FROM ETCO INCORPORATED.

UNCONTROLLED COPY			
<p>THIRD ANGLE PROJECTION</p>	<p>TOOL NO. 0825</p>	<p>Title: LINE GROUND CONTACT</p>	
<p>TOLERANCES UNLESS OTHERWISE SPECIFIED</p> <p>INCHES: .XX - ± .030 .XXX - ± .015</p> <p>ANGLES - ± 5°</p>	<p>DO NOT SCALE DWG.</p>	<p>Drawn By: S. JOHNSON</p>	<p>Date: 1-3-04</p>
	<p>ETCO Incorporated Engineered Products 25 Bellows Street Warwick, R.I. 02888 Phone: (401)467-2400 FAX: (401)467-9230 www.ETCO.com</p>	<p>Chk'd/App'd By:</p>	<p>Scale: 3X Size: C</p>
		<p>Dwg. No.: LGC-1</p>	